

# ***LA-5030 PC Card & LA-5033 PCI Adapter***

## ***User Guide***



***LA-5030 & LA-5033***  
***Wireless Networker PC Card & PCI Adapter***  
***User Guide***

*72E-67970-02*

*Revision A*

*November 2005*

© 2004 by Symbol Technologies, Inc. All rights reserved.

No part of this publication may be reproduced or used in any form, or by any electrical or mechanical means, without permission in writing from Symbol. This includes electronic or mechanical means, such as photocopying, recording, or information storage and retrieval systems. The material in this manual is subject to change without notice.

The software is provided strictly on an “as is” basis. All software, including firmware, furnished to the user is on a licensed basis. Symbol grants to the user a non-transferable and non-exclusive license to use each software or firmware program delivered hereunder (licensed program). Except as noted below, such license may not be assigned, sublicensed, or otherwise transferred by the user without prior written consent of Symbol. No right to copy a licensed program in whole or in part is granted, except as permitted under copyright law. The user shall not modify, merge, or incorporate any form or portion of a licensed program with other program material, create a derivative work from a licensed program, or use a licensed program in a network without written permission from Symbol. The user agrees to maintain Symbol’s copyright notice on the licensed programs delivered hereunder, and to include the same on any authorized copies it makes, in whole or in part. The user agrees not to decompile, disassemble, decode, or reverse engineer any licensed program delivered to the user or any portion thereof.

Symbol reserves the right to make changes to any software or product to improve reliability, function, or design.

Symbol does not assume any product liability arising out of, or in connection with, the application or use of any product, circuit, or application described herein.

No license is granted, either expressly or by implication, estoppel, or otherwise under any Symbol Technologies, Inc., intellectual property rights. An implied license only exists for equipment, circuits, and subsystems contained in Symbol products.

Symbol, Spectrum One, and Spectrum24 are registered trademarks of Symbol Technologies, Inc. Other product names mentioned in this manual may be trademarks or registered trademarks of their respective companies and are hereby acknowledged.

Symbol Technologies, Inc.  
One Symbol Plaza  
Holtsville, New York 11742-1300  
<http://www.symbol.com>

# ***Contents***

## **About This Guide**

Introduction .....	vii
Notational Conventions .....	vii
Service Information .....	viii

## **Chapter 1. Introduction**

### **Chapter 2. About the PC Card & PCI Adapter**

Installation Prerequisites .....	2-2
LA-5033 PCI Adapter System Requirements .....	2-2
LA-5030 PC Card System Requirements .....	2-2
Operating Modes .....	2-3
54Mbps Operation and Frequency Bands .....	2-4
Power Management .....	2-6
LA-5033 PCI Adapter and LA-5030 PC Card LED Descriptions .....	2-6

Wi-Fi Protected Access (WPA) .....	2-7
WPA-PSK .....	2-7
Draft IEEE 802.11h Compatibility .....	2-7
Rogue AP Detection .....	2-8
Software Installation Options .....	2-8

### **Chapter 3. Windows 2000 PCI Adapter Installations**

Windows 2000 Configuration Utility and Driver Installation .....	3-2
Installing the LA-5033 PCI Adapter and Driver for use with Windows 2000 Zero Config .....	3-10
Removing the PCI Adapter Driver in Windows 2000 .....	3-18

### **Chapter 4. Windows XP PCI Adapter Installations**

Installing the LA-5033 PCI Adapter Driver and Configuration Utility in Windows XP .....	4-1
Installing the Driver in Windows XP For Use With the Zero Config Utility .....	4-12
Removing the PCI Adapter Driver in Windows XP .....	4-22

### **Chapter 5. Windows 2000 LA-5030 PC Card Installations**

Installing the LA-5030 PC Card Driver and Configuration Utility in Windows 2000 .....	5-2
Installing the Driver in Windows 2000 For Use With the Zero Config Utility .....	5-11
Removing the PC Card Driver in Windows 2000 .....	5-18

### **Chapter 6. Windows XP LA-5030 PC Card Installations**

Installing the LA-5030 PC Card Driver and Configuration Utility in Windows XP .....	6-2
Installing the Driver in Windows XP For Use With the Zero Config Utility .....	6-13
Removing the PC Card Driver in Windows XP .....	6-23

### **Appendix A. Using the Configuration Utility**

Installing the Configuration Utility .....	A-1
About the Configuration Utility .....	A-2
Configuration Utility Task Tray Icons .....	A-3
Status Page .....	A-4

WLAN Profiles Page .....	A-6
Find WLANs Page .....	A-13
Advanced Page .....	A-15
Info Page .....	A-17

## **Appendix B. WLAN Adapter Specifications**

LA-5033 PCI Adapter Physical .....	B-1
LA-5030 PC Card Physical .....	B-2
Radio .....	B-3

## **Appendix C. Customer Support**

## **Appendix D. Troubleshooting**

LA-5033 PCI Adapter Troubleshooting Tips .....	D-1
The MU cannot associate to the access point .....	D-1
Degraded performance from the LA-5033 WLAN PCI adapter .....	D-2
Nonfunctioning Adapter LEDs .....	D-2
LA-5030 PC Card Troubleshooting Tips .....	D-2
The MU cannot associate to the access point .....	D-2
Degraded performance from the LA-5033 PCI adapter .....	D-2
Nonfunctioning adapter LEDs .....	D-2



# ***About This Guide***

## **Introduction**

The *LA-5030 PC Card & LA-5033 PCI Adapter User Guide* provides general instructions for installing and configuring the adapter in the Windows 2000 and XP operating systems for use with either the Symbol supplied Configuration Utility or the Windows supplied Zero Config utility.

## **Notational Conventions**

The following conventions are used in this document:

- Italics are used to highlight specific items in the general text, and to identify chapters and sections in this and related documents.
- Bullets (•) indicate:
  - action items
  - lists of alternatives
  - lists of required steps that are not necessarily sequential

- Sequential lists (those that describe step-by-step procedures) appear as numbered lists.
- Icons indicate notes, cautions and warnings. Before working on any equipment, be aware of the hazards associated with its installation and use. Also, become familiar with standard practices for preventing accidents. The following icons are used in this document:



**Note**

Indicates tips, hints and special requirements.



**Caution**

ICare is required. Disregarding cautions can cause data loss or equipment damage.



**Warning**

Indicates a potentially dangerous condition or procedure that only Symbol-trained personnel should attempt to correct or perform.

## Service Information

If you have a problem with your equipment, contact Symbol Customer Support. See [Appendix C](#) for contact information. Before calling, have the model number, serial number, and several of your bar code symbols at hand.

Call the Support Center from a phone near the scanning equipment so that the service person can try to talk you through your problem. If the equipment is found to be working properly and the problem is symbol readability, the Support Center will request samples of your bar codes for analysis at our plant.

If your problem cannot be solved over the phone, you may need to return your equipment for servicing. If that is necessary, you will be given specific directions.

Symbol Technologies is not responsible for any damages incurred during shipment if the approved shipping container is not used. Shipping the units improperly can possibly void the warranty. If the original shipping container was not kept, contact Symbol to have another sent to you.

## ***Introduction***

The Wireless Networker LA-5030 PC Card and LA-5033 PCI Adapter allow PC Card slot and PCI slot equipped devices to connect to a Wi-Fi IEEE 802.11 a, b or g wireless local area network (LAN), or communicate directly with other mobile devices enabled for wireless LAN connectivity.

- LA-5030 and LA-5033 adapters support the IEEE 802.11a, b, g, and a WiFi compliance specifications. This open architecture allows LA-5030 and LA-5033 devices to communicate with wireless devices from other manufacturers that conform to the same specifications.
- LA-5030 and LA-5033 adapters allow mobile devices to roam throughout large facilities while remaining connected to the network.
- LA-5030 antenna diversity allows adapters to alternate between antennas with the best reception, increasing overall performance.
- LA-5030 and LA-5033 adapters allow the establishment of ad-hoc wireless workgroup networks.



## ***About the PC Card & PCI Adapter***

Use the LA-5030 PC Card & LA-5033 PCI Adapter to connect to a Symbol wireless network.

Features Include:

- Operating mode options for access point or peer-to-peer associations
- Low-power operation for battery-powered devices with PC Card slots
- Standard NDIS (Network Driver Interface Specification) drivers
- Windows 2000 (using Service Pack 4) and XP (using Service Pack 1 or 2) operating system support
- WEP, WPA-PSK, 802.1x, EAP security
- Power management. Disabled, Dynamic, and Maximum
- Rogue AP Detection
- 54Mbps maximum data rate.

## 2.1 Installation Prerequisites

Keep the adapter serial number in a safe place. The Support Center uses the information to reference warranty and service contract data.



Verify the model indicated on the adapter before use. Contact the Symbol Support Center if an item is missing or not functioning. Refer to Appendix C for Customer Support contact information.

### **Note**

Avoid exposing the adapter to liquids or abrasive materials.

### **2.1.1 LA-5033 PCI Adapter System Requirements**

The LA-5033 PCI Adapter installation requires:

- a system with an available PCI slot
- Windows Service Pack #4 for Windows 2000 installations
- Windows Service Pack #1 or 2 for Windows XP installations
- Internet access for the required driver and Symbol Wireless Networker 802.11 a/g Configuration Utility download.  
[http://www.symbol.com/services/downloads/wn\\_abg\\_drivers.html](http://www.symbol.com/services/downloads/wn_abg_drivers.html)
- an available interrupt (IRQ)
- an available I/O port address



FCC RF exposure requirements state the PCI adapter external antenna should be positioned so it is at least 20 cm (8 inches) away from the user.

### **Note**

### **2.1.2 LA-5030 PC Card System Requirements**

The LA-5030 PC Card installation requires:

- a system with a Type II PC Card slot
- Windows Service Pack #4 for Windows 2000 installations
- Windows Service Pack #1 or 2 for Windows XP installations
- Internet access for the required driver and Symbol Wireless Networker 802.11 a/g Configuration Utility download  
[http://www.symbol.com/services/downloads/wn\\_abg\\_drivers.html](http://www.symbol.com/services/downloads/wn_abg_drivers.html)



To comply with FCC and Industry Canada exposure requirements, this hand-held device is approved for operation near to the user's body.

**Note**

## 2.2 Operating Modes

The Symbol Wireless Networker 802.11 a/g Configuration Utility installs with the Windows driver. Use the Configuration Utility to select the operational mode, ESSID, encryption algorithm, authentication scheme and power consumption mode used with the LA-5030 PC Card or LA-5033 PCI adapter.

The LA-5033 PCI adapter and LA-5030 PC Card support the following operational modes:

- Use **Infrastructure** to interoperate with an access point (AP). The adapter can roam freely between AP cells in the network or transmit and receive across subnets. Mobile Units (MUs) appear as network nodes to other devices in the network. Infrastructure is the adapter default mode.
- Select **Ad Hoc** to form peer-to-peer LA-5030 networks without APs. Use Ad Hoc to create networks within established network coverage areas or networks free of the physical constraints of access point provided radio coverage areas. The MU starting the Ad Hoc network (the first LA5030 adapter transmitting a beacon) determines the channel and data rate used for the other LA-5030 adapters within the network using the same ESSID.

The Symbol Ad Hoc mode is an Independent Basic Service Set (IBSS) mode requiring no backbone infrastructure. The lack of an access point results in MUs alternating the duty of sending beacons. There are no relay functions in an Ad Hoc (IBSS) network, not every MU is capable of communicating with other MUs due to the range limitations. Consequently, all stations need to be within range of each other.

# 2.3 54Mbps Operation and Frequency Bands

The LA-5033 PCI adapter and LA-5030 PC Card support a maximum 54Mbps data rate. The adapter automatically shifts data rates when unable to maintain a high quality connection at 54Mbps. When the WLAN adapter detects improved signal strength, it shifts to an increased data rate (up to the maximum 54Mbps). Different data rate and modulation requirements exist in different bands (standards).

**IEEE 802.11a/g**

<i><b>Data Rate</b></i>	<i><b>Modulation</b></i>
6Mbps	BPSK
9Mbps	BPSK
12Mbps	QPSK
18Mbps	QPSK
24Mbps	16QAM
36Mbps	16QAM
48Mbps	64QAM
54Mbps	64QAM

**IEEE 802.11b**

<i><b>Data Rate</b></i>	<i><b>Modulation</b></i>
1Mbps	DBPSK
2Mbps	DQPSK
5.5Mbps	CCK
11Mbps	CCK

**USA Frequency Band**

5.15 - 5.25 GHz

5.25 - 5.35 GHz

5.725 - 5.825 GHz

**European Frequency Band\***

5.15 - 5.35 GHz

5.47 - 5.725 GHz

**Japan Frequency Band**

5.15 - 5.25 GHz

Several factors can dynamically alter adapter data rate:

- signal strength between the access point and adapter
- the ratio of good transmitted packets vs attempted packets transmitted, but not received
- the MU finds a higher transmit rate with another AP.

**Note**

Physical obstructions and numerous devices operating in close proximity to one another negatively impact the ability to maintain an access point association with a high data rate.

\*The use of 5GHz WLAN's has varying use restrictions; please refer to the Symbol Declaration of Conformity (DoC) for details. Go to <http://www2.symbol.com/doc/>.

## 2.4 Power Management

The LA-5033 PCI adapter and LA-5030 PC Card have flexible power saving mechanisms using the Advanced Page within the Symbol Wireless Networker 802.11 a/g Configuration Utility.

There are three power saving modes:

- **Disabled** - The device does not conserve power
- **Maximum** - The device conserves as much power as possible
- **Dynamic** - The device constantly switches between power-saving and awake states.

## 2.5 LA-5033 PCI Adapter and LA-5030 PC Card LED Descriptions

There are two LED Indicators each on the LA-5030 PC Card and LA-5033 PCI Adapter.

<b>LED</b>	<b>Meaning</b>
Power	<i>Steady Green:</i> Indicates the card is powered on.
Link	<i>Flashing Green:</i> Indicates the card is searching for a wireless connection.  <i>Steady Green:</i> Indicates the card has associated with a wireless network.  <i>OFF:</i> Indicates that the card has not associated with a wireless device.

## 2.6 Wi-Fi Protected Access (WPA)

Wi-Fi Protected Access (WPA) is a security standard for systems operating with a Wi-Fi certified wireless connection. WPA is an upgrade from WEP (a security standard quickly becoming outdated). Compared to WEP, WPA provides superior data encryption and user authentication.

The WPA enhanced encryption method addresses the weaknesses of WEP by including:

- a per-packet key mixing function
- a message integrity check
- an extended initialization vector with sequencing rules
- a re-keying mechanism.

WPA uses an encryption method called Temporal Key Integrity Protocol (TKIP). WPA employs 802.1X and Extensible Authentication Protocol (EAP). Access points can operate in a combination of WEP/WPA modes to support both WEP and WPA clients running the Windows 2000 or XP operating systems.



### Note

For Windows XP users using Zero Config to configure WPA, ensure Service Pack #1 or 2 and WPA Hotfix Q815485 is installed.

### 2.6.1 WPA-PSK

Wi-Fi Protected Access - Pre Shared Key (WPA-PSK) is a type of WPA providing the same durable encryption protection for users without an enterprise authentication server. With WPA-PSK, encryption keys are automatically re-keyed and authenticated after a designated period or after the transmission of a specified number of packets.

## 2.7 Draft IEEE 802.11h Compatibility

The LA-5033 PCI adapter and LA-5030 PC Card are designed to meet the IEEE 802.11h standard. The IEEE 802.11h standard provides dynamic frequency selection (DFS) and transmit power control (TPC) for devices operating in the 5GHz band (802.11a) to comply with European radio regulations. TPC is a means of saving power by determining how much output power is actually required for sending frames to a particular peer station. DFS selects the radio channel on the access point to minimize interference with other systems, particularly radar.

By adding the TPC and DFS functionality, the LA-5033 PCI adapter and LA-5030 PC Card minimize interference to broadcasts and other systems.

## 2.8 Rogue AP Detection

The LA-5033 PCI adapter and LA-5030 PC Card can interoperate with the Symbol AP-4131 access point to detect other devices operating within its coverage area by transmitting beacons and receiving probe responses through an Ethernet connection. It is possible that not all of the devices identified by the access point are operating legitimately.

A rogue AP is an AP located nearby an authorized Symbol AP but recognized as not operating legitimately. The Symbol AP-4131 access point can trap rogue access points by differentiating them into several different rogue classes. The LA-5030 PC Card and LA-5033 PCI adapter work with the AP-4131 access point by providing the AP a list of devices it can detect on the wireless network. The AP then is able to differentiate them (if necessary) into a rogue device category.

For information on configuring Rogue AP support on the Symbol AP-4131 access point for use with the LA-5033 PCI adapter and LA-5030 PC Card, refer to the *Spectrum24 AP-4131 Access Point Product Reference Guide* available at <http://www.symbol.com/services/downloads/>.

## 2.9 Software Installation Options

Symbol recommends using the Symbol Wireless Networker 802.11 a/g Configuration Utility to configure and manage LA-5030 adapter settings. The installation of Symbol Wireless Networker 802.11 a/g Configuration Utility is part of the device driver installation procedure.

Alternatively, the adapter can be managed using the Windows Zero Config utility. Zero Config is a Microsoft provided utility shipped with Windows 2000 and XP.

Use the Symbol Wireless Networker 802.11 a/g Configuration Utility for a more diverse set of driver configuration settings designed specifically for use with the LA-5030 PC Card and LA-5033 PCI adapter and its custom feature set.



### Note

The Symbol Wireless Networker 802.11 a/g Configuration Utility and the Microsoft Zero Config utility cannot function if enabled simultaneously. Do not enable the Microsoft Zero Config utility if using the Symbol Wireless Networker 802.11 a/g Configuration Utility to manage the adapter.

## ***Windows 2000 PCI Adapter Installations***

The Windows 2000 installation (using Service Pack 4) of the LA-5033 PCI adapter requires the physical installation of the adapter, the device driver and the Symbol Wireless Networker 802.11 a/b/g Configuration Utility.

If there is a version of the Symbol Wireless Networker 802.11 a/b/g Configuration Utility and driver in the computer, the software (*Wireless Networker\_RC38Update.exe*) conducts an upgrade where it detects the current version, removes it and starts installing the latest version.

In case the user wants to remove the software manually: Select *Start -> Programs -> Symbol Wireless Networker -> Uninstall* to remove the configuration utility and driver. The user can also use the Windows Add/Remove Programs feature to remove the Configuration Utility and driver.

**Note**

Use proper grounding for the environment when handling computer components.

## 3.1 Windows 2000 Configuration Utility and Driver Installation

To install the Configuration Utility and driver in Windows 2000 (using Service Pack 4):

1. Ensure the previously installed Symbol Wireless Networker 802.11 a/g Configuration Utility and driver have been removed (if necessary).
2. Download the driver and Symbol Wireless Networker 802.11 a/g Configuration Utility from the Symbol Web site ([http://www.symbol.com/services/downloads/wn\\_abg\\_drivers.html](http://www.symbol.com/services/downloads/wn_abg_drivers.html)).

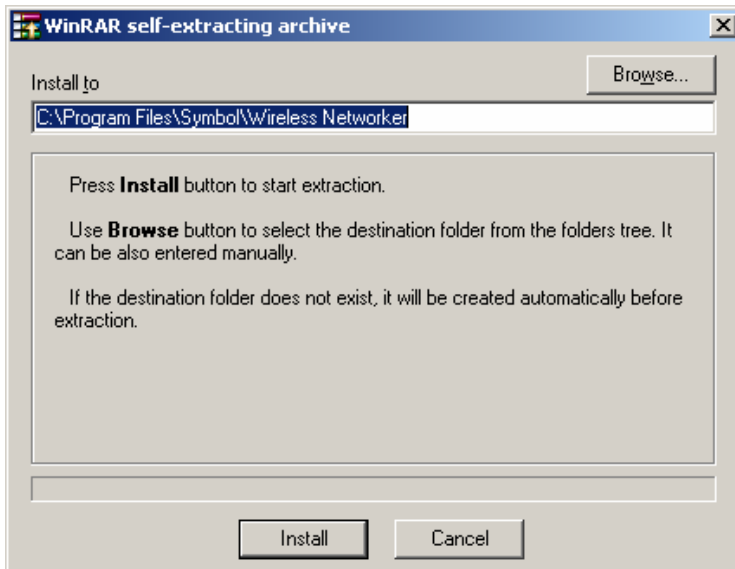
A **File Download** window displays prompting the user to either open the driver and software installer or save the installation package to the system.



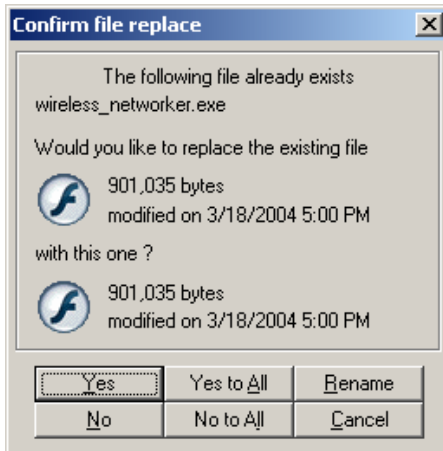
**Note**

To manually install the driver and software package select **Save**, define a destination location for the driver and software and follow the prompts displayed by the installer.

3. Install the driver from the self-extractable binary **Wireless Networker\_RC38Update.exe**. Define a destination location for the driver and software package and follow the prompts displayed by the installer. Click the **Install** button.



If a **Confirm file replace** window displays, click the **Yes to all** button to continue.

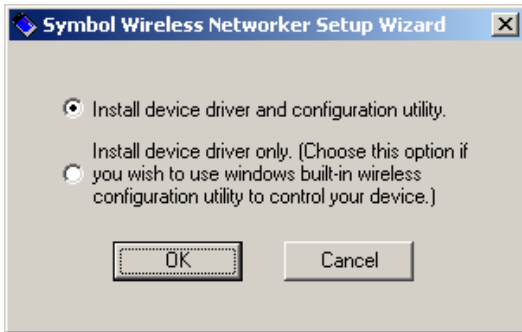


The **Symbol Wireless Networker Install Menu** displays.

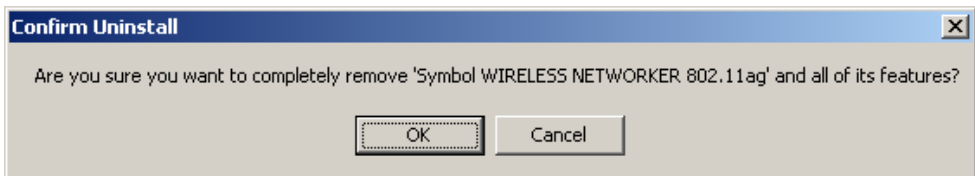


4. Select the **Install Software** option.

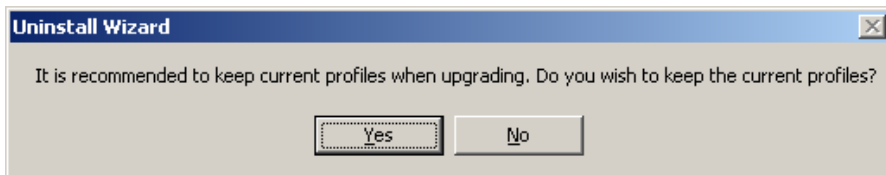
The **Symbol Wireless Networker Setup Wizard** displays.



5. Select the **Install device driver and configuration utility** checkbox. Click **OK**.
6. If this is a first time software and driver installation, proceed to step 10. If the current installation is an upgrade, the software detects the previous version and begins to uninstall it, continue with step 7.
7. While uninstalling, a **Confirm Uninstall** window displays prompting for a confirmation for uninstalling the previous version. Click **OK** to continue the uninstall process.



8. An **Uninstall Wizard** displays prompting for the user to save existing adapter profiles. Symbol recommends clicking **Yes** to archive the profile information.



The **Maintenance Complete** window displays.

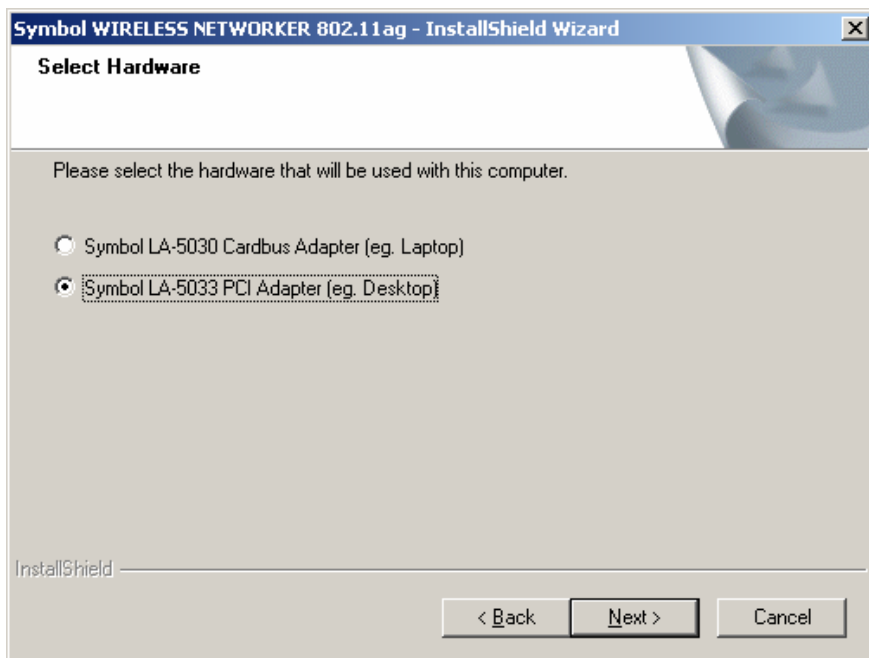
9. Click **Finish** to complete the driver software removal.  
A **Symbol Wireless Networker 802.11a/g - InstallShield Wizard** displays.
10. Click **Next** to continue the Windows 2000 driver and Symbol Wireless Networker 802.11 a/g Configuration Utility installation.

A **License Agreement** window displays.



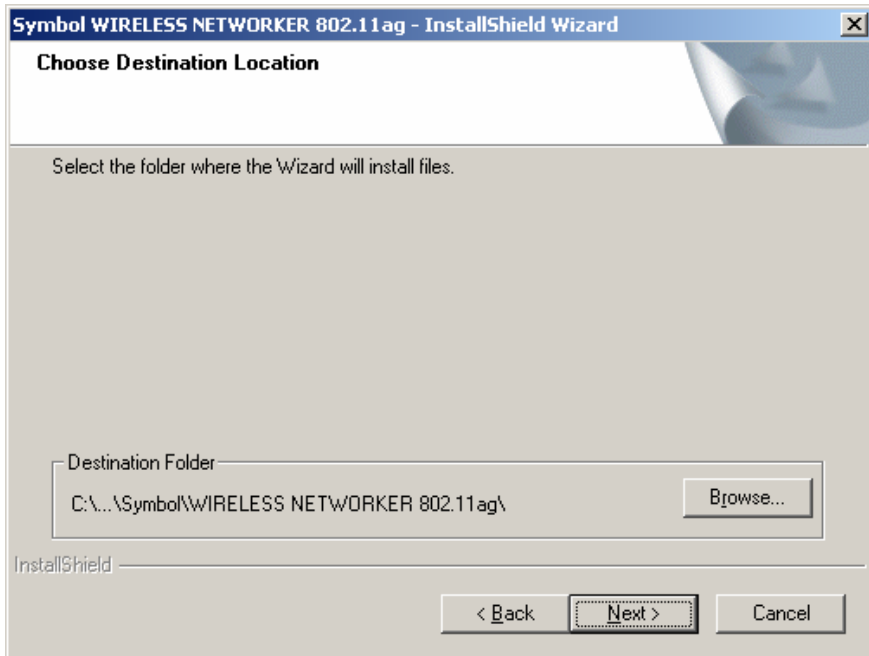
11. Select **I accept the terms of the license agreement**. Click **Next**.

A **Select Hardware** window displays.



12. Select **Symbol LA-5033 PCI Adapter (eg. Desktop)**. Click **Next**.

A **Choose Destination Location** window displays prompting the user to confirm the destination folder for the application software.



13. Click **Next** to continue using the default path, or click **Browse** to specify a different location for the software.

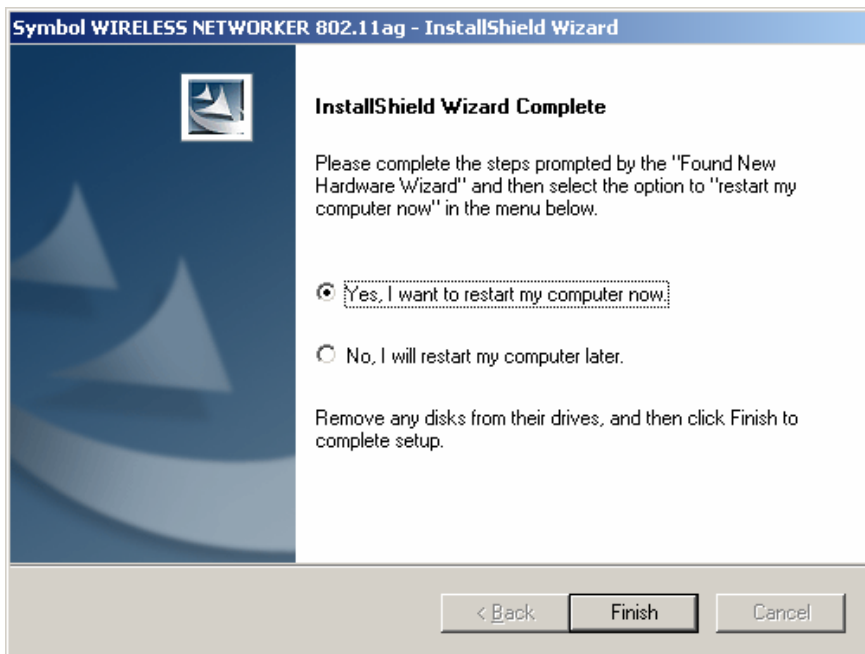
The InstallShield Wizard begins installing the Configuration Utility and driver.



If a **Digital Signature Not Found** window displays, click **Yes** to continue the installation.

**Note**

14. If the PCI adapter is already installed in the system, complete the following. If the PCI adapter is not installed, proceed to step 15.
  - a. Complete the steps as prompted by the installer.



- b. When the **InstallShield Wizard** is completed, select the **Yes, I want to restart my computer now** button. Do not finish the InstallShield Wizard and restart the system without completing the **Digital Signature Not Found** (see step 13) if the PCI adapter is already installed. The **Found New Hardware** window displays and Windows begins installing the driver and software package. Proceed to step 16.
15. If the PCI adapter is not installed in the system, complete the following:
  - a. Click the **Yes, I want to restart my computer now** button and the **Finish** button within the **InstallShield Wizard** window.
  - b. Power off the computer before installing the PCI adapter.
  - c. Remove the computer cover.
  - d. Locate an available PCI slot in the computer.
  - e. Remove the retaining screw and bracket for the PCI slot.
  - f. Take the antenna with the extended cable, and pass it through the bracket hole and secure it on the cradle. The user can select the best position for the cradle.
  - g. Align the adapter with the slot and insert firmly. Verify the adapter seats in the slot evenly.

- h. Secure the adapter to the chassis with a retaining screw.
- i. Replace the computer cover.
- j. Power on the desktop computer.

The Windows **Found New Hardware** window displays.

The system detects the new hardware and installs the drivers automatically.

16. Once the driver has been installed successfully, the link LED on the PCI Adapter illuminates. The Configuration Utility icon displays in the task tray.



17. Double-click on the Configuration Utility icon to display the utility. Select the **Find WLANs** tab and select the network ESSID best suited to the signal strength and interoperability requirements for the adapter. The user is ready to use the PCI adapter with the Configuration Utility.

Proceed to Appendix A [Using the Configuration Utility](#) for information on using the Configuration Utility to manage the LA-5033 PCI Adapter.

## 3.2 Installing the LA-5033 PCI Adapter and Driver for use with Windows 2000 Zero Config

Use the Windows 2000 Zero Config utility as the adapter management tool if using the LA- 5033 PCI adapter without the Symbol Configuration Utility or if using a 3rd party software supplicant. The Symbol Configuration Utility does not function properly while 3rd party software supplicants are loaded on the system.

If there is a version of the Symbol Wireless Networker 802.11 a/b/g Configuration Utility and driver in the computer, the software (*Wireless Networker\_RC38Update.exe*) performs an upgrade by detecting the current version, removing the current version and installing the latest version.

Select *Start->Program->Symbol Wireless Networker->Uninstall* to remove the Configuration Utility and driver simultaneously. Alternatively, the user can use the Windows Add/Remove Programs option to remove the Configuration Utility and driver.

To install the LA-5033 PCI adapter and driver without the Symbol Configuration Utility in Windows 2000 (using Service Pack 4):

1. Ensure the previously installed Symbol Wireless Networker 802.11 a/g Configuration Utility and driver has been removed (if necessary).
2. Download the driver (for use with Zero Config) from the Symbol Web site ([http://www.symbol.com/services/downloads/wn\\_abg\\_drivers.html](http://www.symbol.com/services/downloads/wn_abg_drivers.html)).

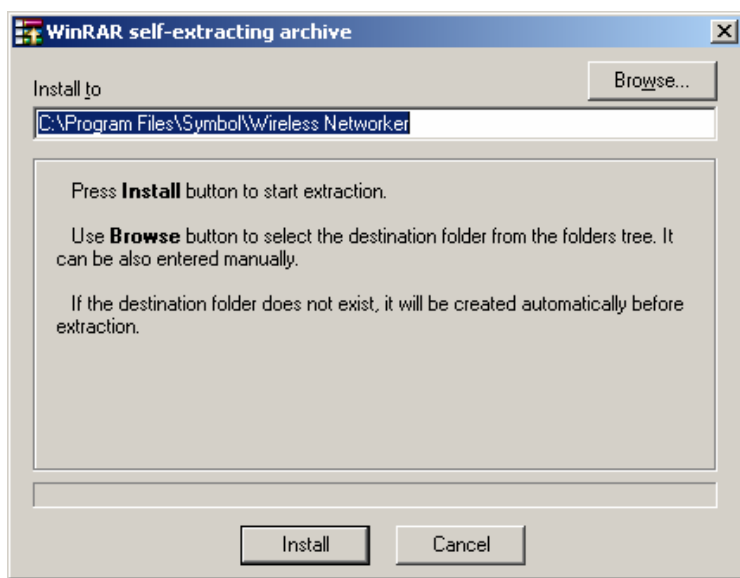
A **File Download** window displays prompting the user to either open the driver and software installer or save the installation package to the system.



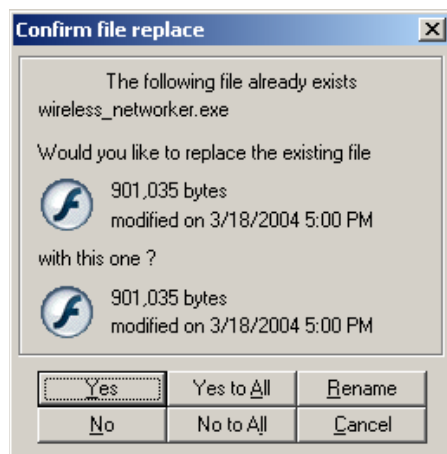
**Note**

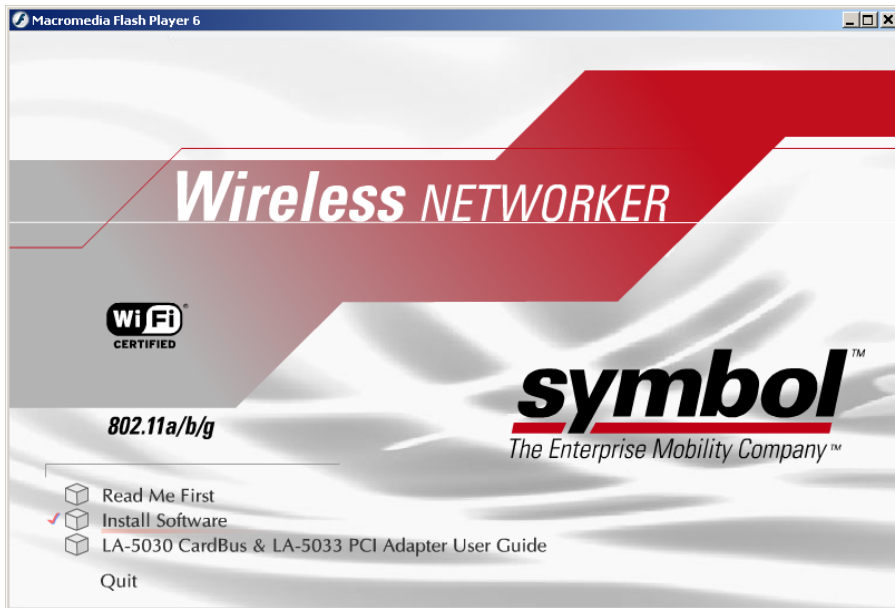
To manually install the driver and software package select **Save**, define a destination location for the driver and software package and follow the prompts displayed by the installer.

3. Install the driver from the self-extractable binary **Wireless Networker\_RC38Update.exe**. Define a destination location for the driver and follow the prompts displayed by the installer. Click the **Install** button.



If a **Confirm file replace** window displays, click the **Yes to all** button to continue.

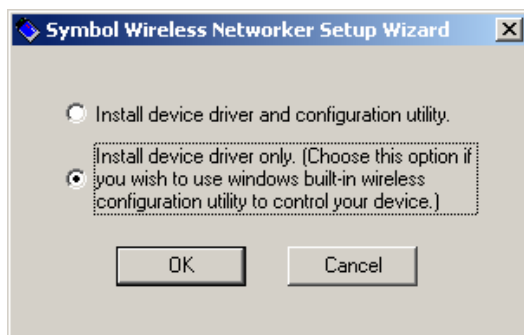




The **Symbol Wireless Networker Install Menu** displays.

4. Select the **Install Software** option.

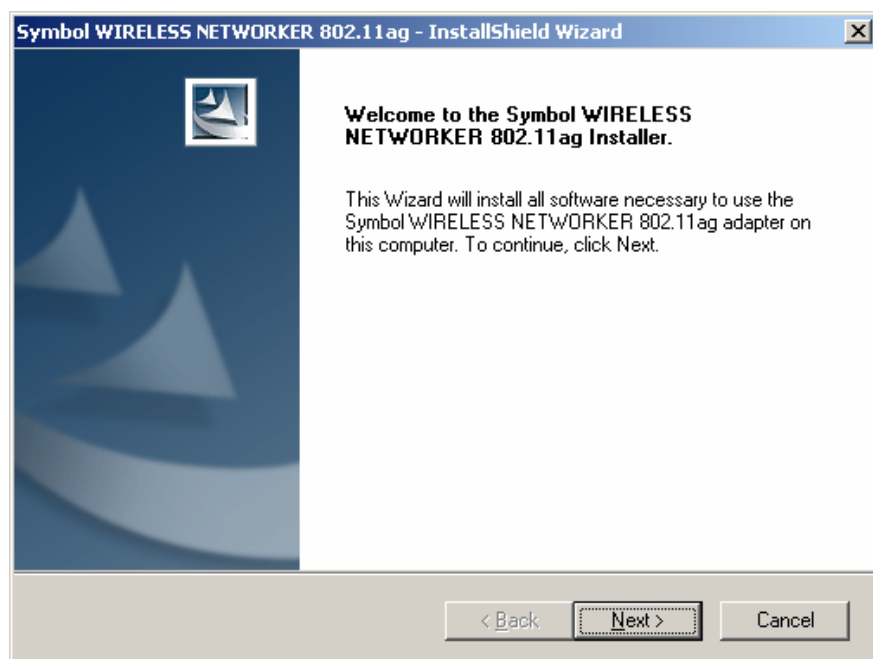
The **Symbol Wireless Networker Setup Wizard** displays.



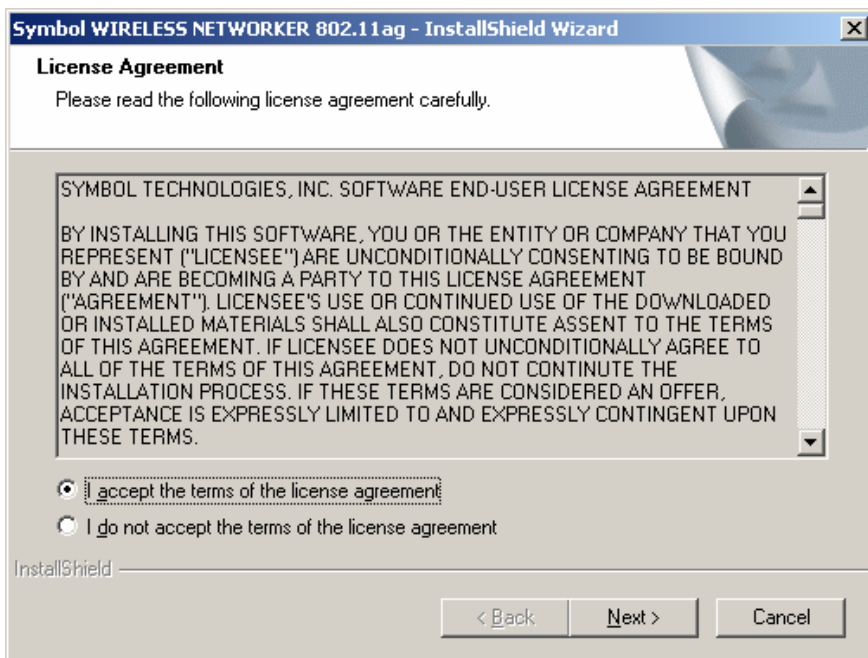
5. Select the **Install device driver only** checkbox. Click **OK**. If a previous version of the driver exists on the system, the software will detect it and uninstall it.

A **Symbol Wireless Networker 802.11ag driver - InstallShield Wizard** displays.

6. Click **Next** to continue the Windows 2000 (Service Pack 4) driver installation.

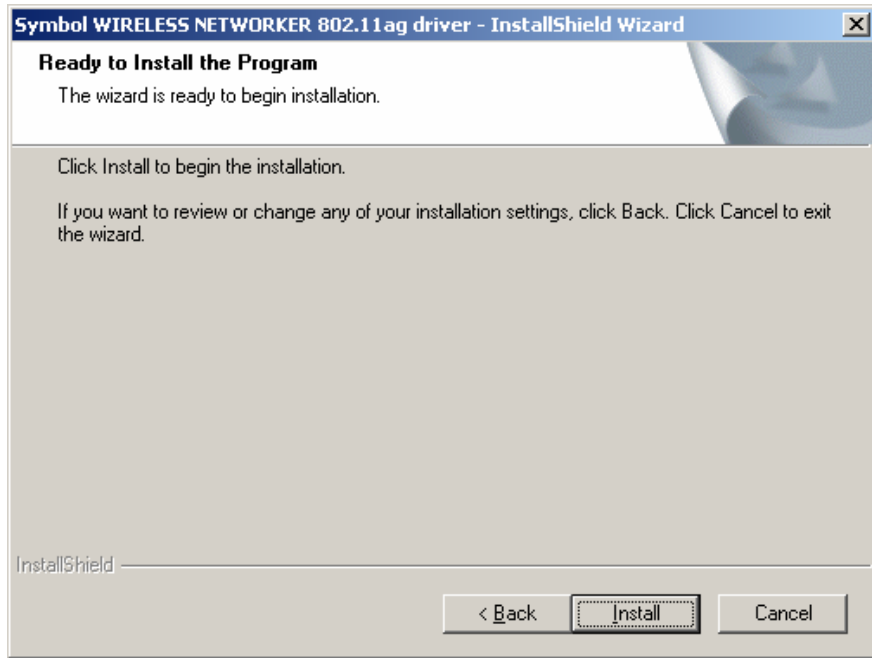


A **License Agreement** window displays.



7. Select **I accept the terms of the license agreement**. Click **Next**.

A **Ready to Install the Program** window displays.



8. Click **Install**.

The InstallShield Wizard begins installing the driver.



If a **Digital Signature Not Found** window displays, click **Yes** to continue the installation.

**Note**

An **InstallShield Wizard Complete** window displays.

9. Click **Finish** to complete the driver installation.



**Caution**

---

Ensure the system is powered off before removing the computer cover to reduce the risk of electric shock.

---

10. Install the PCI adapter in the system:
  - a. Power off the computer before installing the PCI adapter.
  - b. Remove the computer cover.

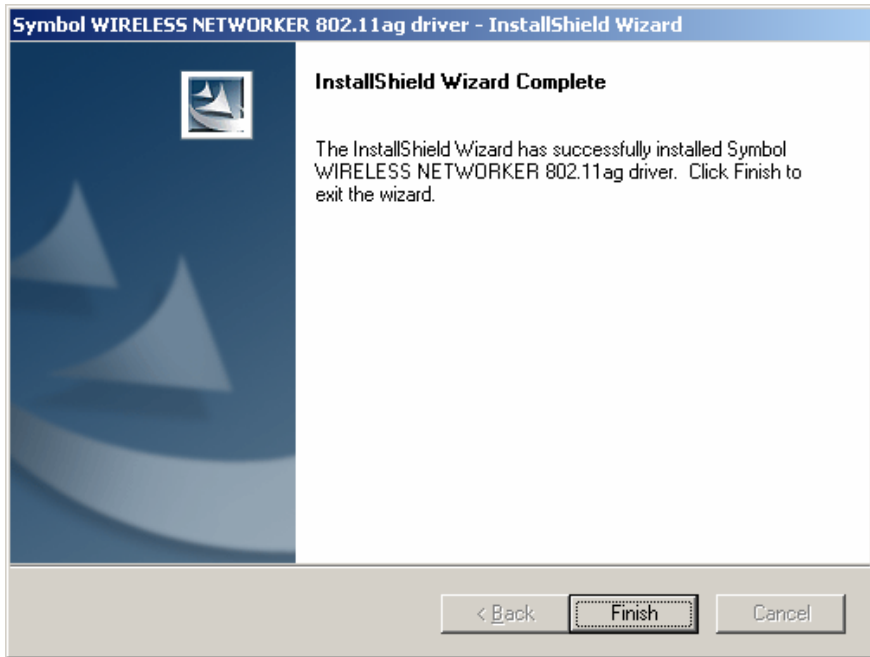
- c. Locate an available PCI slot in the computer.
- d. Remove the retaining screw and bracket for the PCI slot.
- e. Take the antenna with the extended cable, pass it through the bracket hole and secure it on the cradle. The user can select a best position for the cradle.
- f. Align the adapter with the slot and insert firmly. Verify the adapter seats in the slot evenly.
- g. Secure the adapter to the chassis with a retaining screw.
- h. Replace the computer cover.
- i. Power on the desktop computer.

The systems detects the new hardware.



In the event that a **Digital Signature Not Found** window displays stating the installation has not passed Windows Logo testing, click on **Yes** to continue the installation.

11. The **Found New Hardware Wizard** displays a message stating the wizard has completed the adapter software installation. Click **Finish**.



Once the driver has been installed successfully, the link LED on the PCI adapter illuminates.

12. Consult the system administrator for information on configuring the access point and associated Symbol adapter using the Windows 2000 Zero Config utility.

## 3.3 Removing the PCI Adapter Driver in Windows 2000

If an existing version of the LA-5033 driver exists in the system, remove it and install the latest version from the Symbol Web site [http://www.symbol.com/services/downloads/wn\\_abg\\_drivers.html](http://www.symbol.com/services/downloads/wn_abg_drivers.html).

**Note**

If the LA-5033 PCI Adapter driver and software package was downloaded and launched from the Symbol Web site, the user is required to uninstall the driver from the system and begin the installation over.

To uninstall a LA-5033 driver from the system in Windows 2000:

1. Click **Start, Settings** and select **Control Panel**.
2. Select **System** and click on the **Hardware** tab.
3. Click the **Device Manager** button.
4. Double-click **Network Adapters**.

A list of the devices currently supported on the system by Windows 2000 displays.

5. Right-click on the Symbol LA-5033 Wireless Networker 802.11 a/g PCI Adapter and select **Uninstall**.

A Confirm Device Removal window warns the user the system will uninstall the device.

6. Select **OK**.
7. Install the driver again, either with the Wireless Networker Configuration Utility or as a standalone driver installation.

## ***Windows XP PCI Adapter Installations***

### **4.1 Installing the LA-5033 PCI Adapter Driver and Configuration Utility in Windows XP**

Installing the LA-5033 driver in Windows XP (using either Service Pack 1 or 2) requires the user to replace the Symbol LA-5033 driver provided by the Windows XP operating system with a newer version of the driver downloaded from the Symbol Website.

If there is a version of the Symbol Wireless Networker 802.11 a/b/g Configuration Utility and driver in the computer, the software (*Wireless Networker\_RC38Update.exe*) conducts an upgrade where it detects the current version, removes it and starts installing the latest version.

In case the user wants to remove the driver and Configuration Utility from the system manually: *Select Start -> Programs -> Symbol Wireless Networker -> Uninstall* . The user can also use the Windows Add/Remove Programs feature to remove the Configuration Utility and driver.



**Note**

Use proper grounding for the environment when handling computer components.

To install the Configuration Utility and driver in Windows XP (using either Service Pack 1 or 2):

1. Ensure the previously installed Symbol Wireless Networker 802.11 a/g Configuration Utility and driver have been removed (if necessary).
2. Download the driver and Symbol Wireless Networker 802.11 a/g Configuration Utility from the Symbol Web site ([http://www.symbol.com/services/downloads/wn\\_abg\\_drivers.html](http://www.symbol.com/services/downloads/wn_abg_drivers.html)).

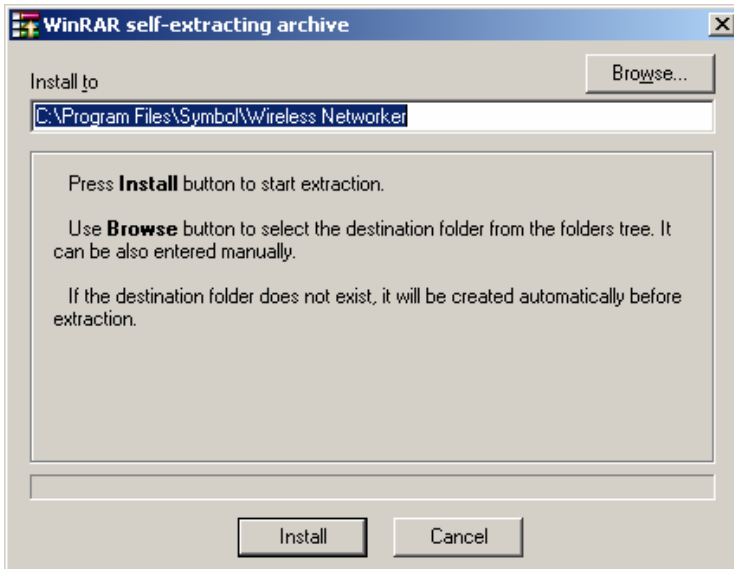
A **File Download** window displays prompting the user to either open the driver and software installer or save the installation package to the system.



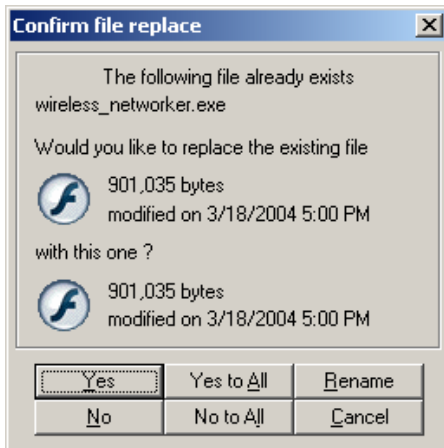
**Note**

To manually install the driver and software package select **Save**, define a destination location for the driver and software package and follow the prompts displayed by the installer.

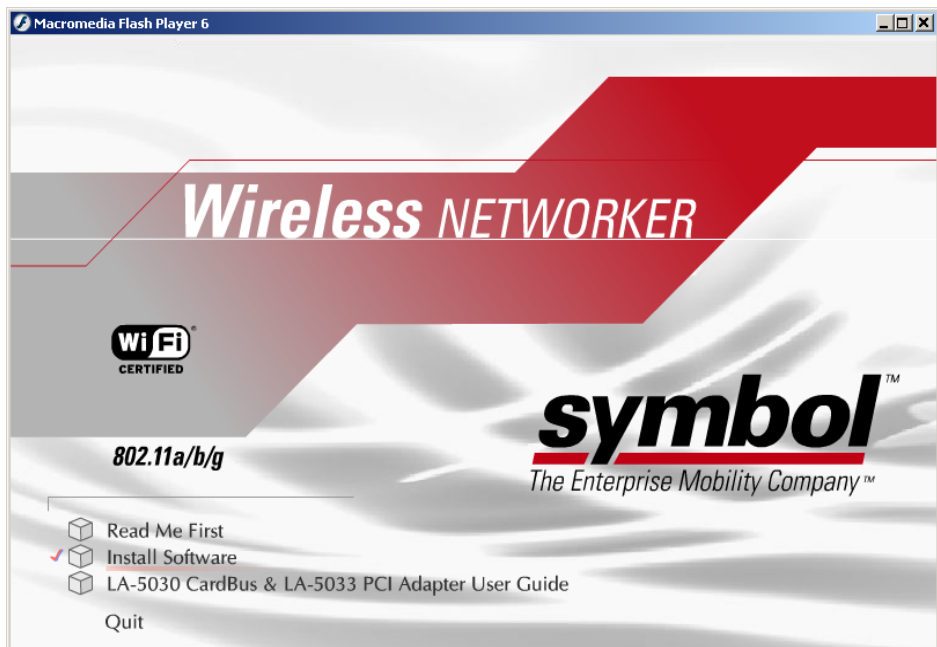
3. Install the driver from the self-extractable binary **Wireless Networker\_RC38Update.exe**. Define a destination location for the driver and software package and follow the prompts displayed by the installer. Click the **Install** button.



If a **Confirm file replace** window displays, click the **Yes to all** button to continue.

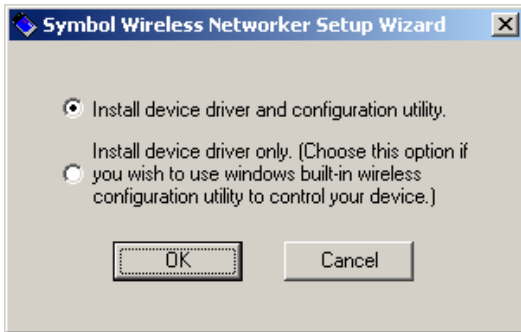


The **Symbol Wireless Networker Install Menu** displays.

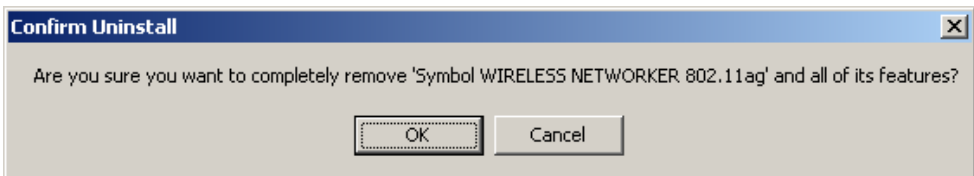


4. Select the **Install Software** option.

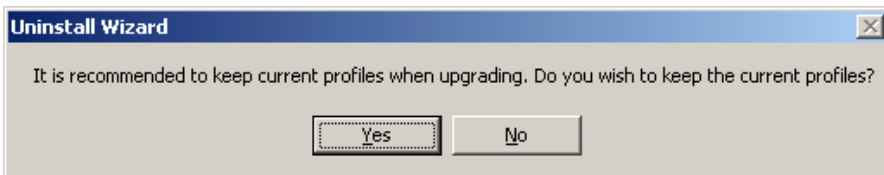
The **Symbol Wireless Networker Setup Wizard** displays.



5. Select the **Install device driver and configuration utility** checkbox. Click **OK**.
6. If this is a first time software and driver installation, proceed to step 10. If the current installation is an upgrade, the software detects the previous version and begins to uninstall it, continue with step 7.
7. While uninstalling, a **Confirm Uninstall** window displays prompting for a confirmation for uninstalling the previous version. Click **OK** to continue the uninstall process.



8. An **Uninstall Wizard** displays prompting for the user to save existing adapter profiles. Symbol recommends clicking **Yes** to archive the profile information.



The **Maintenance Complete** window displays.

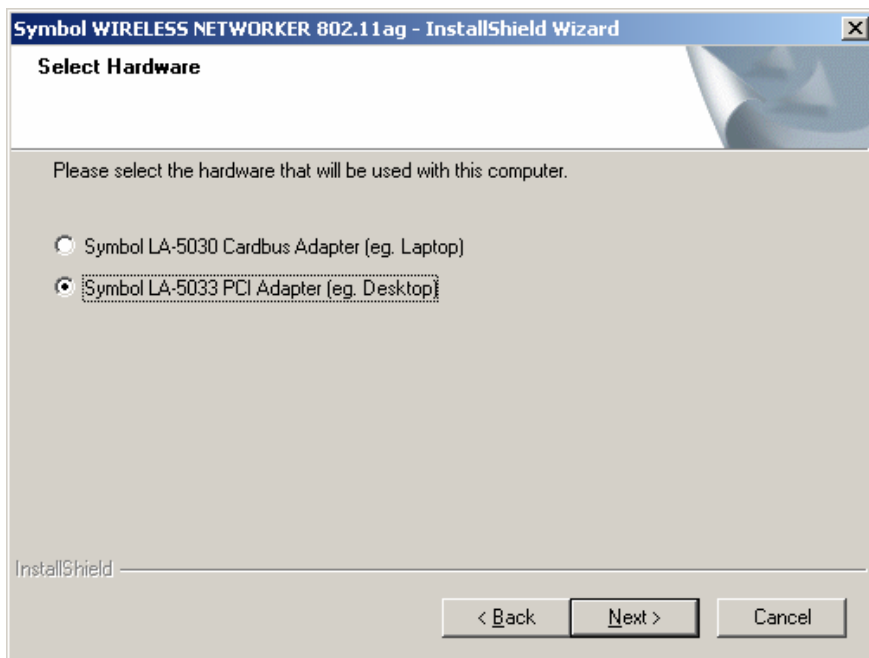
9. Click **Finish** to complete the driver software removal.  
A **Symbol Wireless Networker 802.11a/g - InstallShield Wizard** displays.
10. Click **Next** to continue the Windows XP (SP1 or SP2) driver and Symbol Wireless Networker 802.11 a/g Configuration Utility installation.

A **License Agreement** window displays.



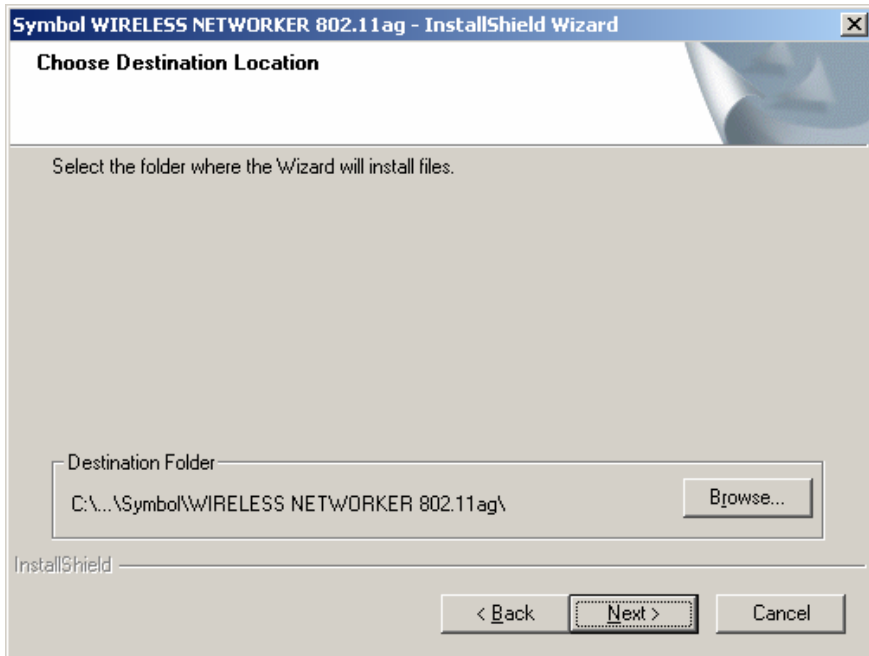
11. Select **I accept the terms of the license agreement**. Click **Next**.

A **Select Hardware** window displays.



12. Select **Symbol LA-5033 PCI Adapter (eg. Desktop)**. Click **Next**.

A **Choose Destination Location** window displays prompting the user to confirm the destination folder for the application software.



13. Click **Next** to continue using the default path, or click **Browse** to specify a different location for the software.

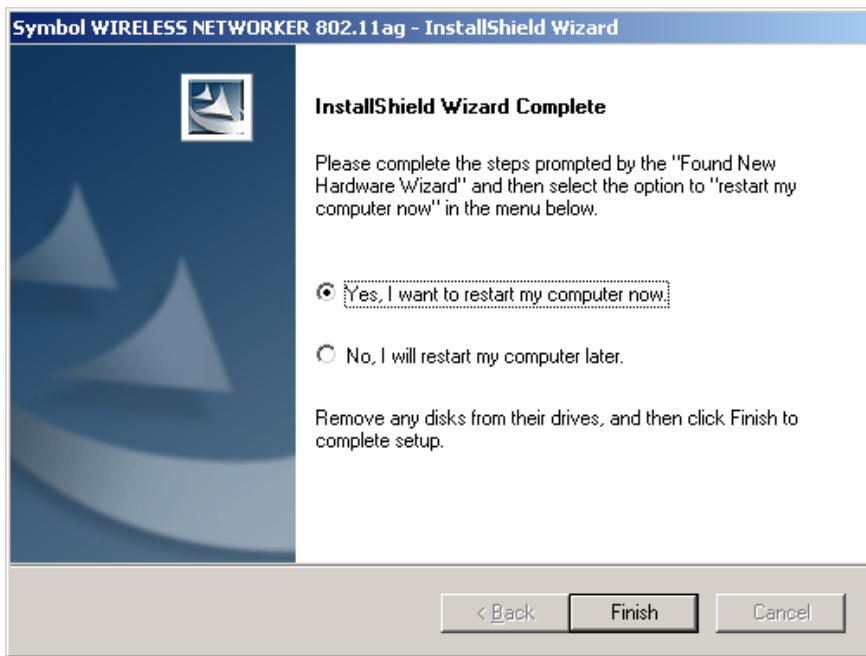
The InstallShield Wizard begins installing the Configuration Utility and driver.



**Note**

If a **Software Installation** window displays stating the installation package has not passed Windows Logo testing, click **Continue Anyway** to continue with the installation.

14. If the PCI adapter is already installed in the system, complete the following. If the PCI adapter is not installed, proceed to step 15.
  - a. Complete the steps as prompted by the installer.



- b. When the **InstallShield Wizard** is completed, select **Yes, I want to restart my computer now**. The **Found New Hardware** window displays and Windows begins installing the driver and software package. Proceed to step 16.
15. If the PCI adapter is not installed in the system, complete the following:
    - a. Click the **Yes, I want to restart my computer now** button and the **Finish** button within the **InstallShield Wizard** window.
    - b. Power off the computer before installing the PCI adapter.
    - c. Remove the computer cover.
    - d. Locate an available PCI slot in the computer.
    - e. Remove the retaining screw and bracket for the PCI slot.
    - f. Take the antenna with the extended cable, and pass it through the bracket hole and secure it on the cradle. The user can select the best position for the cradle.
    - g. Align the adapter with the slot and insert firmly. Verify the adapter seats in the slot evenly.
    - h. Secure the adapter to the chassis with a retaining screw.

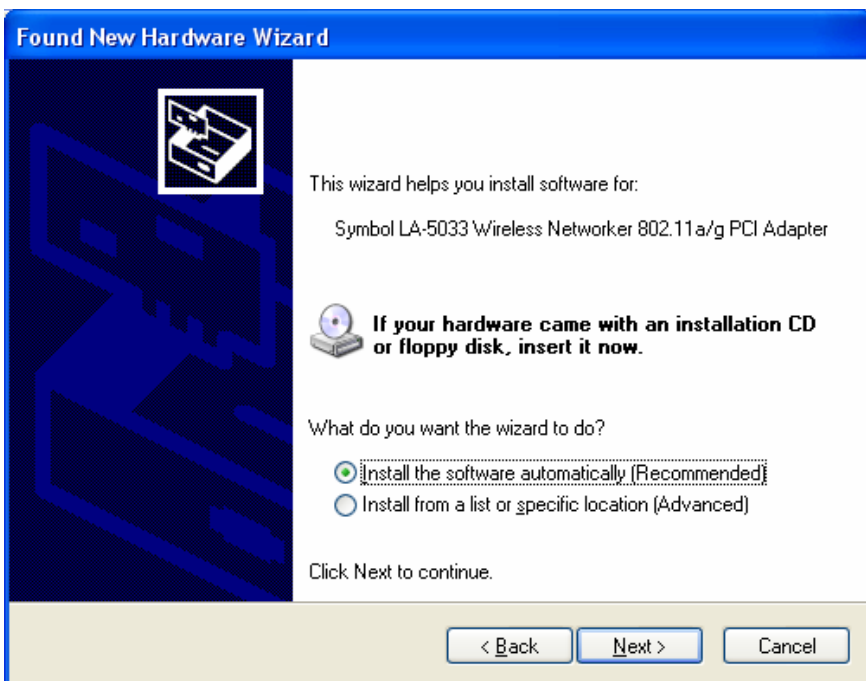
- i. Replace the computer cover.
- j. Power on the desktop computer.

The Windows **Found New Hardware Wizard** displays.



16. Select **No, not this time**, and click **Next**.

The Windows **Found New Hardware Wizard** displays again.



17. Select **Install the software automatically [Recommended]** and click **Next**. The system detects the new hardware and installs the device automatically.



If a **Hardware Installation** window displays stating the PCI adapter has not passed Windows Logo testing, click **Continue Anyway** to continue with the installation.

The Found New Hardware Wizard displays a message stating the wizard has completed the adapter software installation.

18. Click **Finish** to close the wizard and complete the installation.
19. Once the driver has been installed successfully, the link LED on the PCI Adapter illuminates. The Configuration Utility icon displays in the task tray.



20. Double-click on the Configuration Utility icon to display the utility. Select the **Find WLANs** tab and select the network ESSID best suited to the signal strength and interoperability requirements for the adapter. The user is ready to use the PCI adapter with the Configuration Utility.

Proceed to Appendix A [Using the Configuration Utility](#) for information on using the Configuration Utility to manage the LA-5033 PCI Adapter.

## 4.2 Installing the Driver in Windows XP For Use With the Zero Config Utility

Use the Windows XP Zero Config utility as the adapter management tool if using the LA- 5033 PCI adapter without the Symbol Configuration Utility or if using a 3rd party software supplicant. The Symbol Configuration Utility does not function properly while 3rd party software supplicants are loaded on the system.

If there is a version of the Symbol Wireless Networker 802.11 a/b/g Configuration Utility and driver in the computer, the software (*Wireless Networker\_RC38Update.exe*) performs an upgrade by detecting the current version, removing the current version and installing the latest version.

Select *Start->Program->Symbol Wireless Networker->Uninstall* to remove the Configuration Utility and driver simultaneously. Alternatively, the user can use the Windows Add/Remove Programs option to remove the Configuration Utility and driver.

To install the LA-5033 PCI adapter and driver without the Symbol Configuration Utility in Windows XP (using Service Pack 1 or 2):

1. Ensure the previously installed Symbol Wireless Networker 802.11 a/g Configuration Utility and driver has been removed (if necessary).
2. Download the driver (for use with Zero Config) from the Symbol Web site ([http://www.symbol.com/services/downloads/wn\\_abg\\_drivers.html](http://www.symbol.com/services/downloads/wn_abg_drivers.html)).

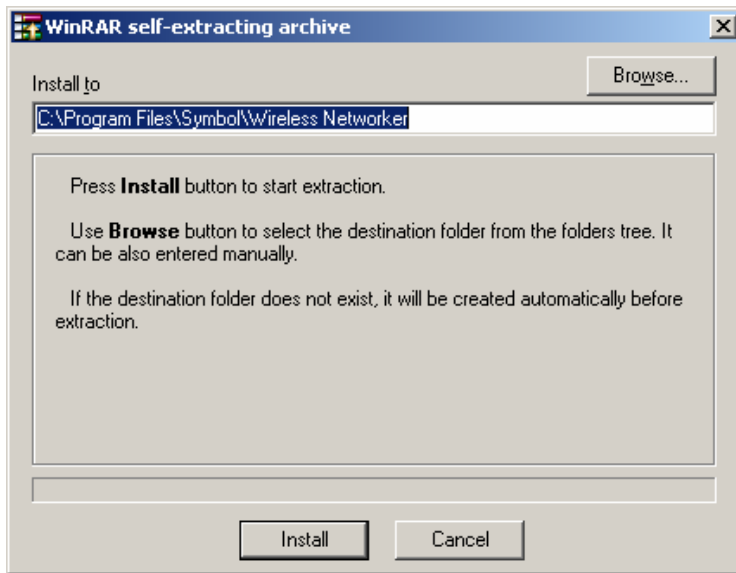
A **File Download** window displays prompting the user to either open the driver and software installer or save the installation package to the system.



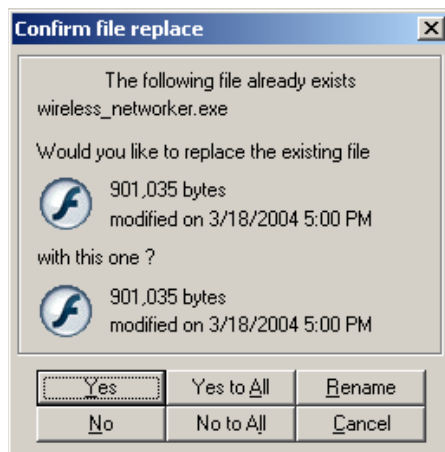
**Note**

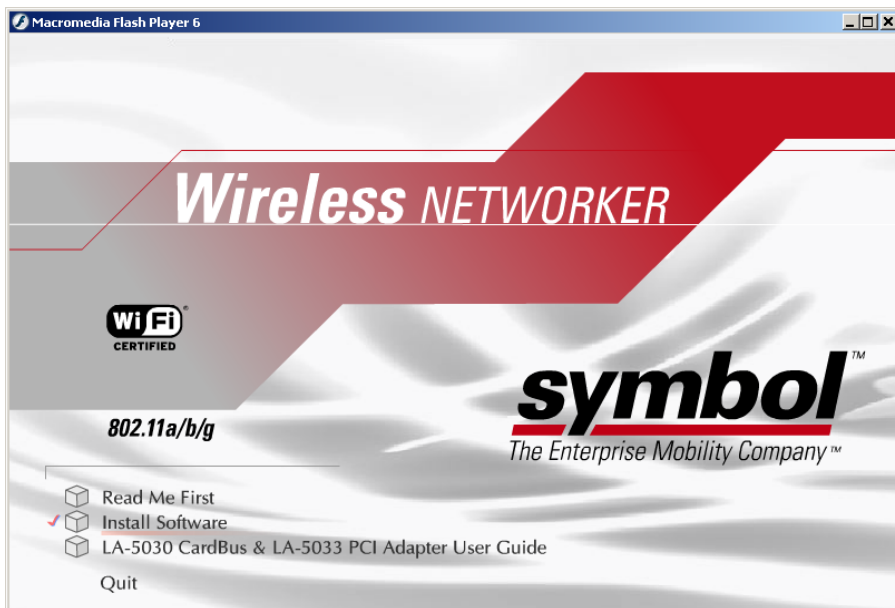
To manually install the driver and software package select **Save**, define a destination location for the driver and software package and follow the prompts displayed by the installer.

3. Install the driver from the self-extractable binary **Wireless Networker\_RC38Update.exe**. Define a destination location for the driver and follow the prompts displayed by the installer. Click the **Install** button.



If a **Confirm file replace** window displays, click the **Yes to all** button to continue.

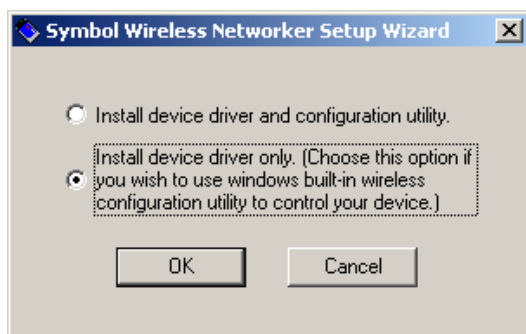




The **Symbol Wireless Networker Install Menu** displays.

4. Select the **Install Software** option.

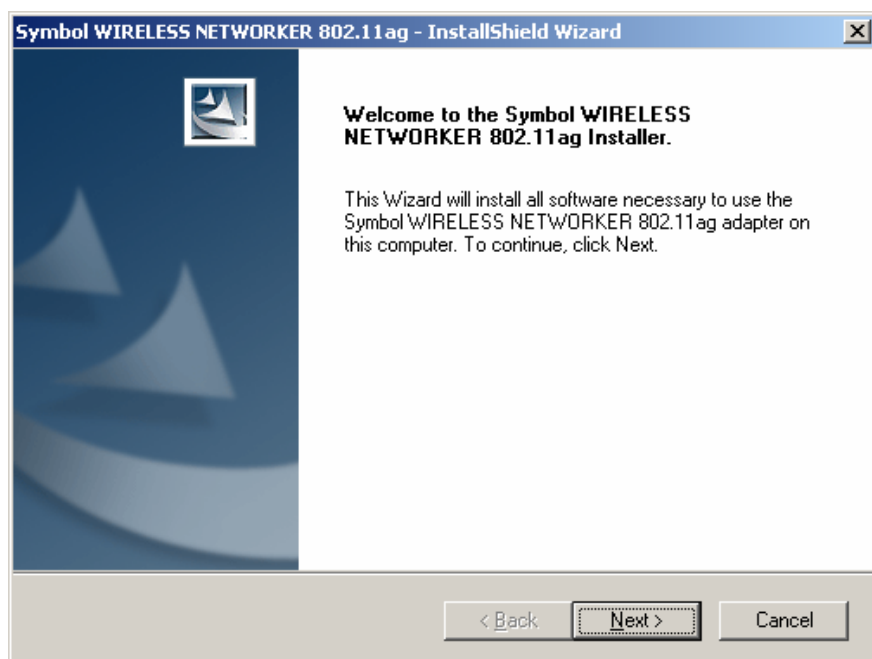
The **Symbol Wireless Networker Setup Wizard** displays.



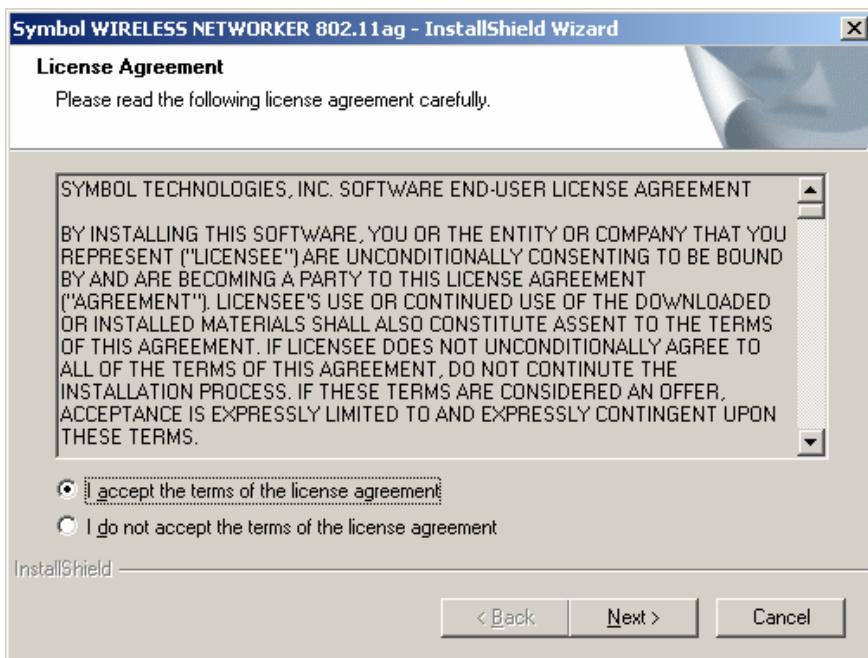
5. Select the **Install device driver only** checkbox. Click **OK**. If a previous version of the driver exists on the system, the software will detect it and uninstall it.

A **Symbol Wireless Networker 802.11ag driver - InstallShield Wizard** displays.

6. Click **Next** to continue the Windows XP (Service Pack 1 or 2) driver installation.

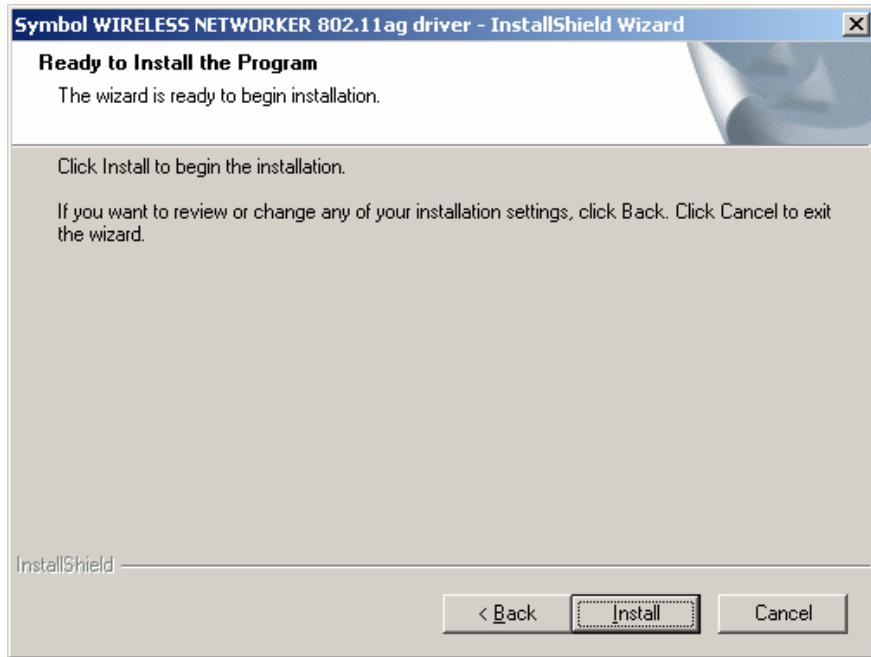


A **License Agreement** window displays.



7. Select **I accept the terms of the license agreement**. Click **Next**.

A **Ready to Install the Program** window displays.



8. Click **Install**.

The InstallShield Wizard begins installing the driver.

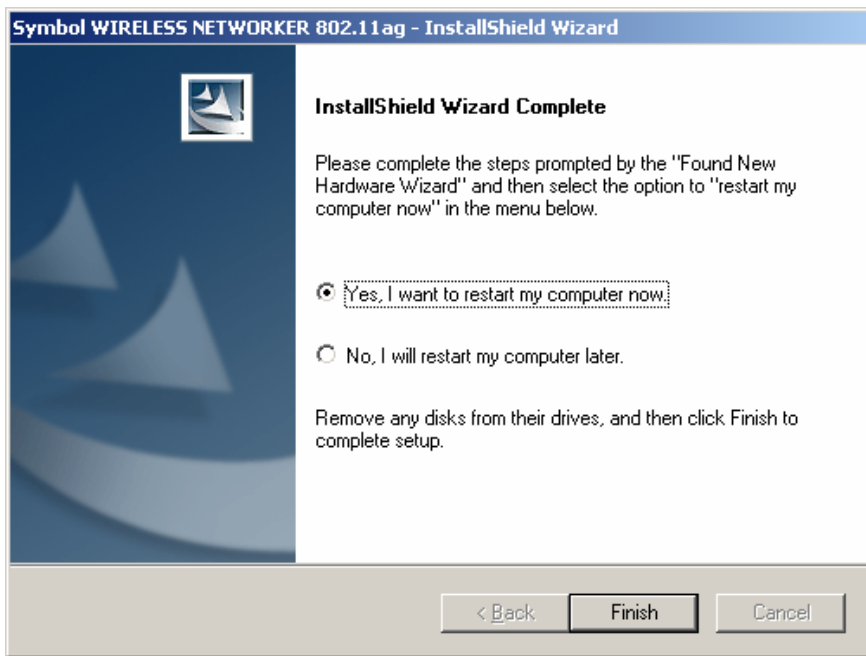


If a **Select Hardware** window displays prompting user to remove/re-install/keep the previous driver, select **Remove previously installed driver**. This window displays if the user used the driver-only option previously.



If a **Software Installation** window displays stating the installation has not passed Windows Logo testing, click **Continue Anyway** to continue the installation.

9. If the PCI adapter is already installed in the system, complete the following. If the PCI adapter is not installed, proceed to step 10.
  - a. Complete the steps as prompted by the installer.



- b. When the **InstallShield Wizard** is completed, select **Yes, I want to restart my computer now**. The **Found New Hardware Wizard** displays and Windows begins installing the driver and software package. Proceed to step 11.
10. If the PCI adapter is not installed in the system, complete the following:
    - a. Click the **Yes, I want to restart my computer now** button and the **Finish** button within the **InstallShield Wizard** window.
    - b. Power off the computer before installing the PCI adapter.
    - c. Remove the computer cover.
    - d. Locate an available PCI slot in the computer.
    - e. Remove the retaining screw and bracket for the PCI slot.
    - f. Take the antenna with the extended cable, and pass it through the bracket hole and secure it on the cradle. The user can select the best position for the cradle.
    - g. Align the adapter with the slot and insert firmly. Verify the adapter seats in the slot evenly.
    - h. Secure the adapter to the chassis with a retaining screw.

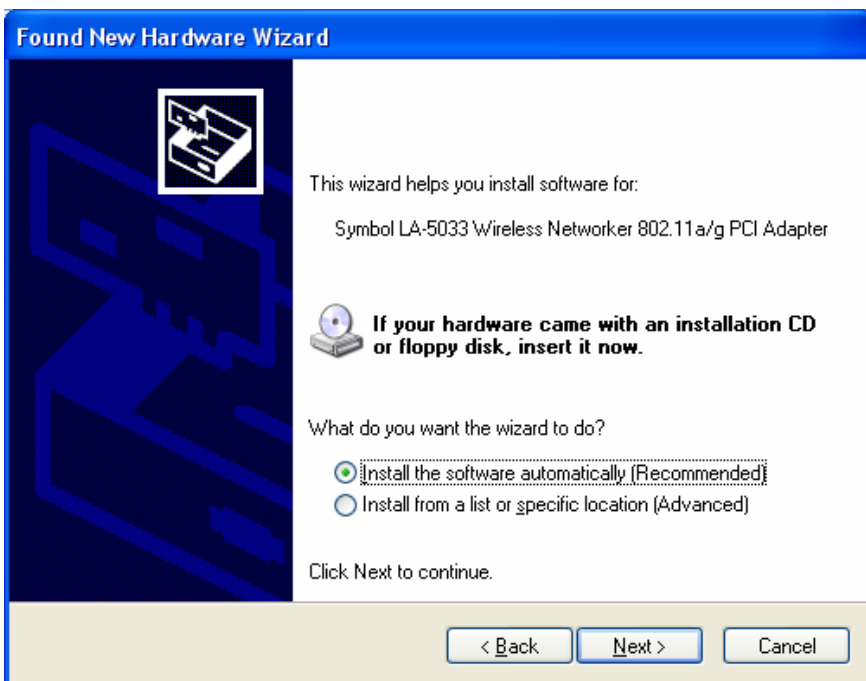
- i. Replace the computer cover.
- j. Power on the desktop computer.

The Windows **Found New Hardware Wizard** displays.



11. Select **No not this time**, and click **Next**.

The Windows **Found New Hardware Wizard** displays again.



12. Select **Install the software automatically [Recommended]** and click **Next**. The system detects the new hardware and installs the device automatically.

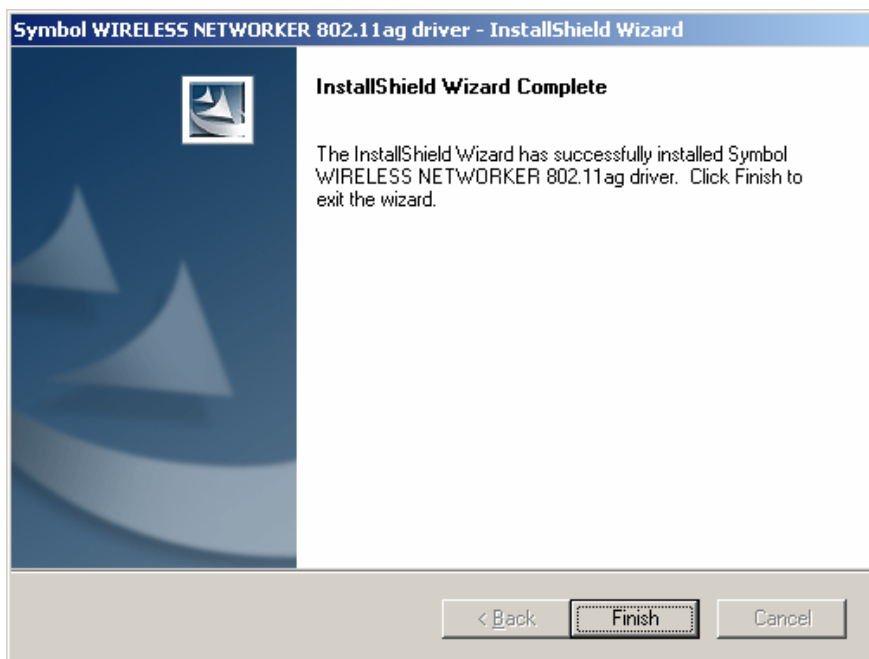


**Note**

If a **Hardware Installation** window displays stating the PCI adapter has not passed Windows Logo testing, click **Continue Anyway** to continue with the installation.

The Found New Hardware Wizard displays a message stating the wizard has completed the adapter software installation.

13. Click **Finish** to close the wizard and complete the installation.



Once the driver has been installed successfully, the link LED on the PCI adapter illuminates.

14. Consult the system administrator for information on configuring the Symbol PCI adapter using the Windows XP Zero Config utility.

## 4.3 Removing the PCI Adapter Driver in Windows XP

If an existing version of the LA-5033 driver exists in the system, uninstall it and install the latest version from the Symbol Web site

[http://www.symbol.com/services/downloads/wn\\_abg\\_drivers.html](http://www.symbol.com/services/downloads/wn_abg_drivers.html).



If the LA-5033 PCI Adapter driver and software package was downloaded and launched from the Symbol Web site, the user is required to uninstall the driver from the system and begin the installation over.

To remove a driver from the system in Windows XP:

1. Click **Start** and select **Control Panel**.
2. Select the **Switch to Classic View** Windows XP option.
3. Select **System** and click on the **Hardware** tab.
4. Click the **Device Manager** button.
5. Double-click **Network Adapters**.

A list of the devices currently supported on the system by Windows XP displays.

6. Right-click on the Symbol LA-5033 Wireless Networker 802.11a/g PCI Adapter and select **Uninstall**.

The **Confirm Device Removal** window warns the user the system will uninstall the device.

7. Select **OK**.
8. Install the driver again, either with the Wireless Networker Configuration Utility or as a standalone driver installation.

## ***Windows 2000 LA-5030 PC Card Installations***

Symbol supports two different install options for the LA-5030 PC Card in Windows 2000 (using Service Pack 4). Use the adapter with the Symbol driver and recommended Symbol Wireless Networker 802.11 a/g Configuration Utility for optimal feature availability.

Refer to

*[Installing the LA-5030 PC Card Driver and Configuration Utility in Windows 2000 on page 5-2](#)* for installation information.

Go to ([http://www.symbol.com/services/downloads/wn\\_abg\\_drivers.html](http://www.symbol.com/services/downloads/wn_abg_drivers.html)) and download the driver and Symbol Wireless Networker 802.11 a/g Configuration Utility installer. Once downloaded, extract the files to the computer hard drive.

## 5.1 Installing the LA-5030 PC Card Driver and Configuration Utility in Windows 2000

The installation of the LA-5030 PC Card requires the physical installation of the adapter, the device driver and the Symbol Wireless Networker 802.11 a/b/g Configuration Utility.

If there is a version of the Symbol Wireless Networker 802.11 a/b/g Configuration Utility and driver in the computer, the software (*Wireless Networker\_RC38Update.exe*) performs an upgrade by detecting the current version, removing the current version and installing the latest version.

Select *Start->Program->Symbol Wireless Networker->Uninstall* to remove the Configuration Utility and driver simultaneously. Alternatively, the user can use the Windows Add/Remove Programs option to remove the Configuration Utility and driver.

To install the LA-5030 PC Card driver and Configuration Utility in Windows 2000 (using Service Pack 4):

1. Ensure the previously installed driver and Symbol Wireless Networker 802.11 a/g Configuration Utility have been uninstalled (if necessary).
2. Download the driver and Symbol Wireless Networker 802.11 a/g Configuration Utility from the Symbol Web site ([http://www.symbol.com/services/downloads/wn\\_abg\\_drivers.html](http://www.symbol.com/services/downloads/wn_abg_drivers.html)).

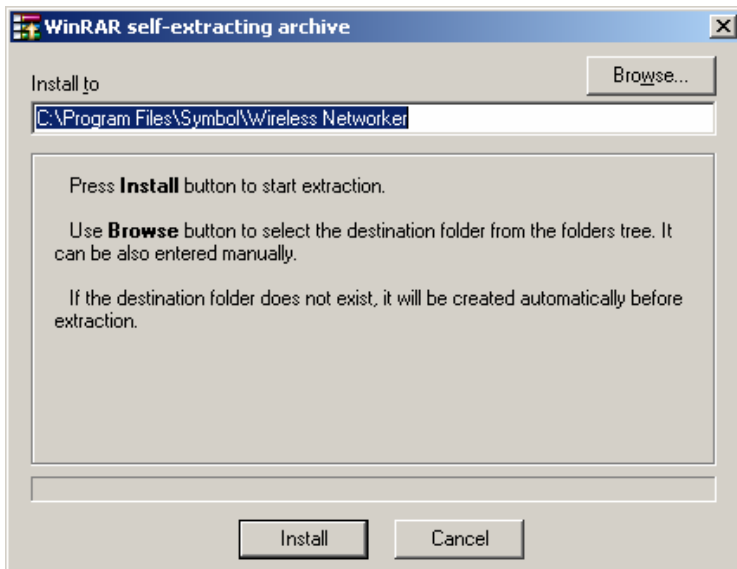
A **File Download** window displays prompting the user to either open the driver and software installer or save the installation package to the system



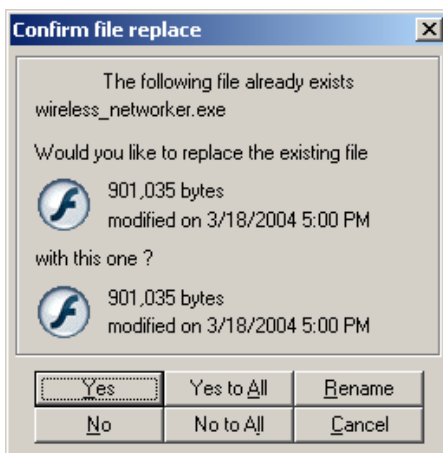
### Note

To manually install the driver and software package select Save, define a destination location for the driver and software package and follow the prompts displayed by the installer.

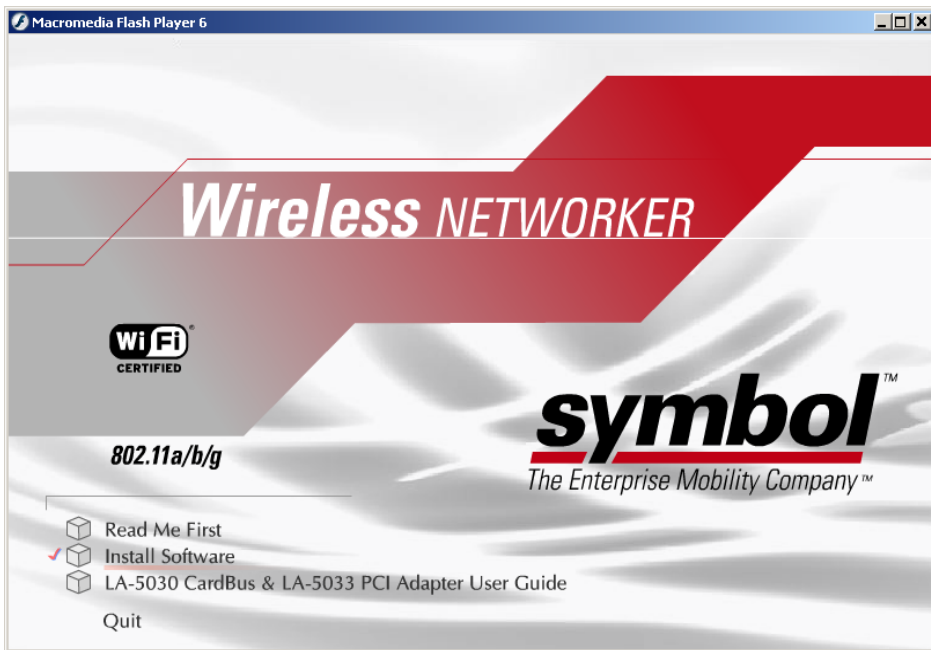
3. Install the driver from the self-extractable binary **Wireless Networker\_RC38Update.exe**. Define a destination location for the driver and software package and follow the prompts displayed by the installer. Click the **Install** button.



If a **Confirm file replace** window displays, click **Yes to all**.

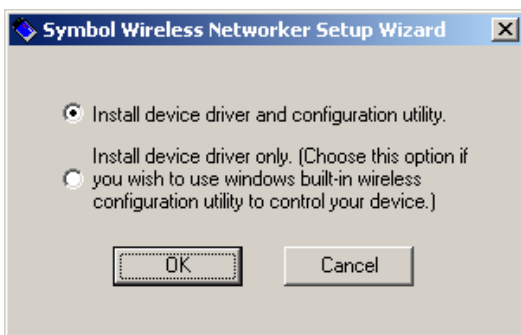


The **Symbol Wireless Networker Install Menu** displays.



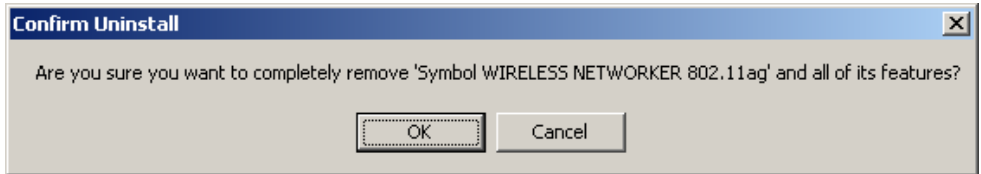
4. Select the **Install Software** option.

The **Symbol Wireless Networker Setup Wizard** displays.

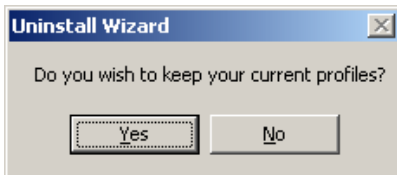


5. Select the **Install device driver and configuration utility** checkbox. Click **OK**.
6. If this is a first time software and driver installation, proceed to step 10. If the current installation is an upgrade, the software detects the previous version and begins to uninstall it, continue with step 7.

7. While uninstalling, a **Confirm Uninstall** window displays prompting for a confirmation for uninstalling the previous version. Click **OK** to continue the uninstall process.



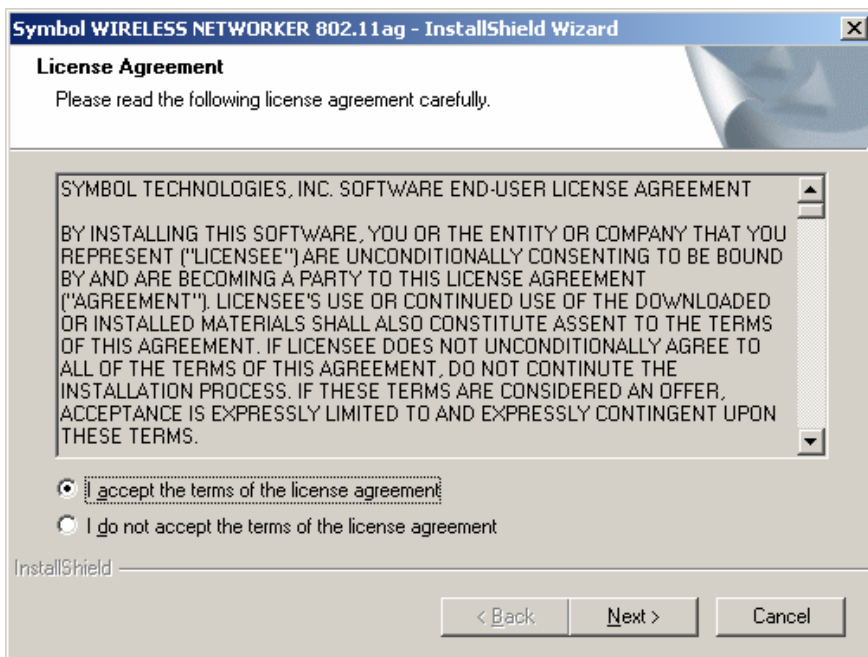
8. An **Uninstall Wizard** displays prompting for the user to save existing WLAN adapter profiles. Symbol recommends clicking **Yes** to archive the profile information.



The **Maintenance Complete** window displays.

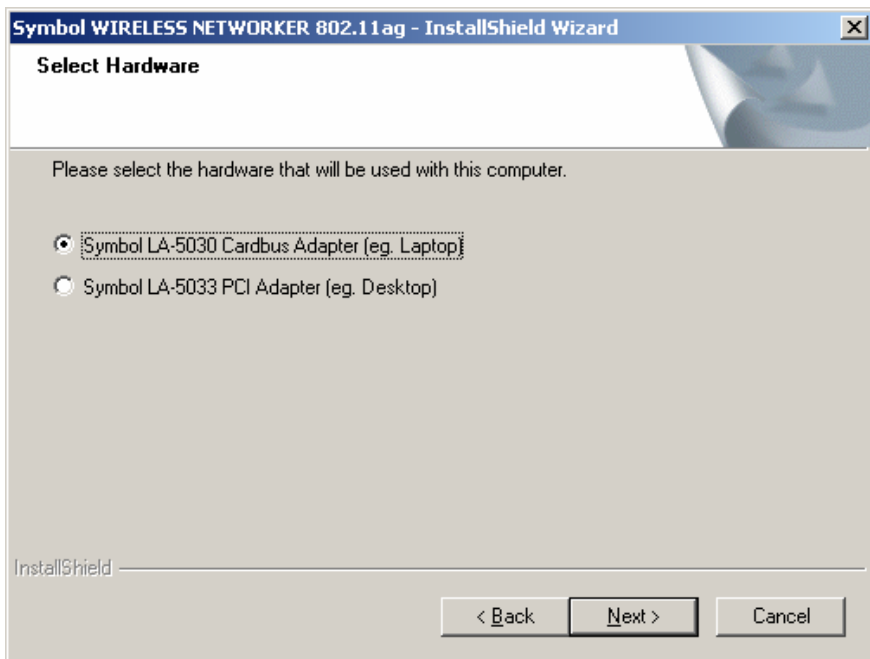
9. Click **Finish** to complete the driver software removal.  
A **Symbol Wireless Networker 802.11a/g - InstallShield Wizard** displays.
10. Click **Next** to continue the Windows 2000 driver and Symbol Wireless Networker 802.11 a/g Configuration Utility installation.

A **License Agreement** window displays.



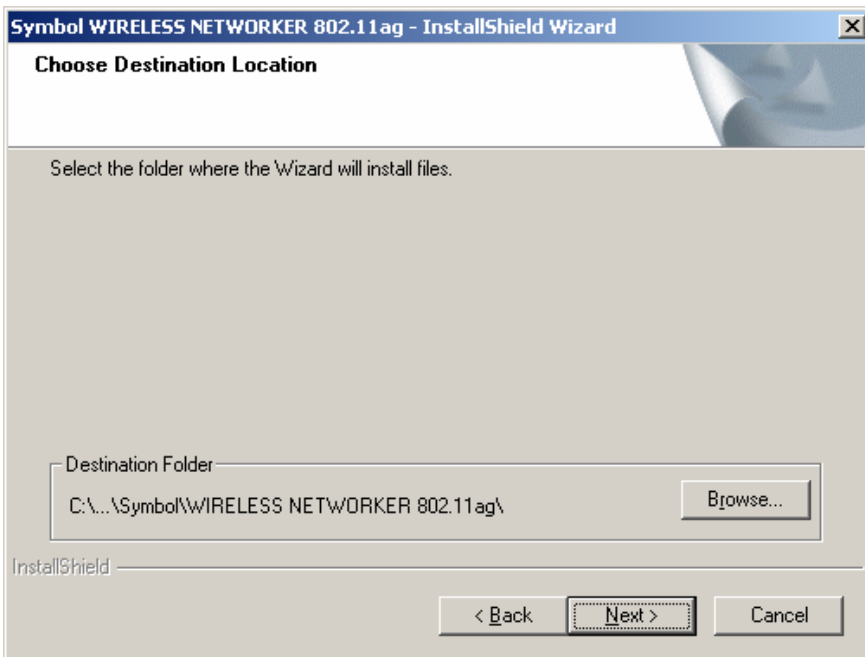
11. Select **I accept the terms of the license agreement**. Click **Next**.

A **Select Hardware** window displays.



12. Select **Symbol LA-5030 PC Card (eg. Laptop)**. Click **Next**.

A **Choose Destination Location** window displays prompting the user to confirm the destination folder for the application software.



13. Click **Next** to continue using the default path, or click **Browse** to specify a different location for the software.

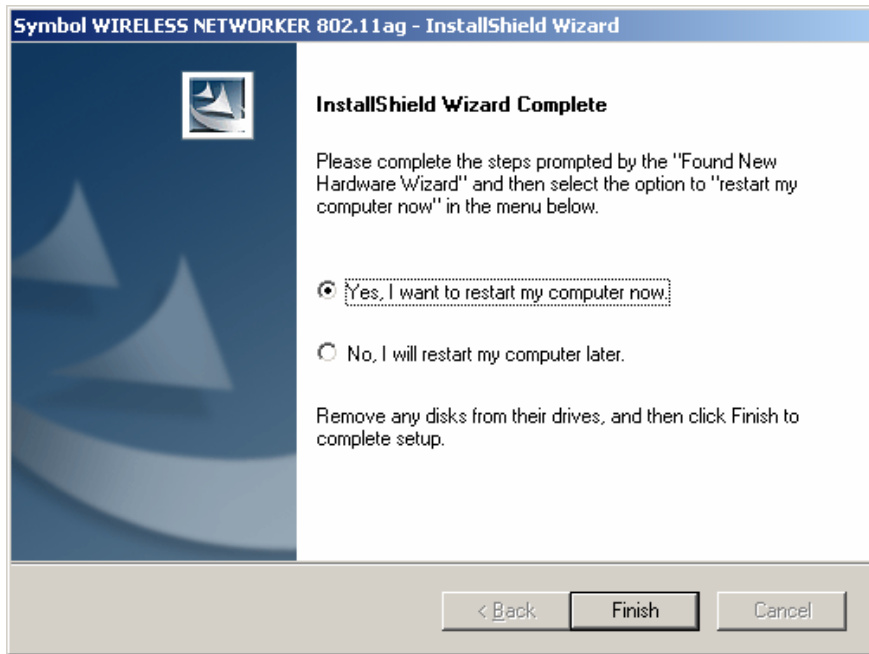
The InstallShield Wizard begins installing the Configuration Utility and driver.



If a **Digital Signature Not Found** window displays, click **Yes** to continue the installation.

**Note**

14. If the PC Card is already installed in the system, complete the following. If the PC Card is not installed, proceed to step 15.
  - a. Complete the steps as prompted by the installer.



- b. When the **InstallShield Wizard** is completed, select **Yes, I want to restart my computer now**. Do not finish the InstallShield Wizard and restart the system without completing the **Digital Signature Not Found** instructions (see step 13) if the PC Card is already installed. The **Found New Hardware** window displays and Windows begins installing the driver and software package. Proceed to step 16.
15. If the PC Card is not installed in the system, complete the following:
  - a. Select the **Yes, I want to restart my computer now** button.
  - b. Click **Finish**.
  - c. When the system reboots, align the PC Card properly before inserting it in the slot.
  - d. Insert the PC Card firmly without forcing until it sits snugly.

The Windows **Found New Hardware** window displays.

The system detects the new hardware and installs the drivers automatically.

16. Once the driver has been installed successfully, the link LED on the PC Card illuminates. The Configuration Utility icon displays in the task tray.



17. Double-click on the Configuration Utility icon to display the utility. Select the **Find WLANs** tab and select the network ESSID best suited to the signal strength and interoperability requirements for the adapter. The user is ready to use the PC Card with the Configuration Utility.

Proceed to Appendix A [Using the Configuration Utility](#) for information on using the Configuration Utility to manage the LA-5030 PC Card.

## 5.2 Installing the Driver in Windows 2000 For Use With the Zero Config Utility

Use the Windows 2000 Zero Config utility as the adapter management tool if using the LA-5030 PC Card without the Symbol Configuration Utility or if using a 3rd party software supplicant. The Symbol Configuration Utility does not function properly while 3rd party software supplicants are loaded on the system.

If there is a version of the Symbol Wireless Networker 802.11 a/b/g Configuration Utility and driver in the computer, the software (*Wireless Networker\_RC38Update.exe*) performs an upgrade by detecting the current version, removing the current version and installing the latest version.

Select *Start->Program->Symbol Wireless Networker->Uninstall* to remove the Configuration Utility and driver simultaneously. Alternatively, the user can use the Windows Add/Remove Programs option to remove the Configuration Utility and driver.

To install the LA-5030 PC Card and driver without the Symbol Configuration Utility in Windows 2000 (using Service Pack 4):

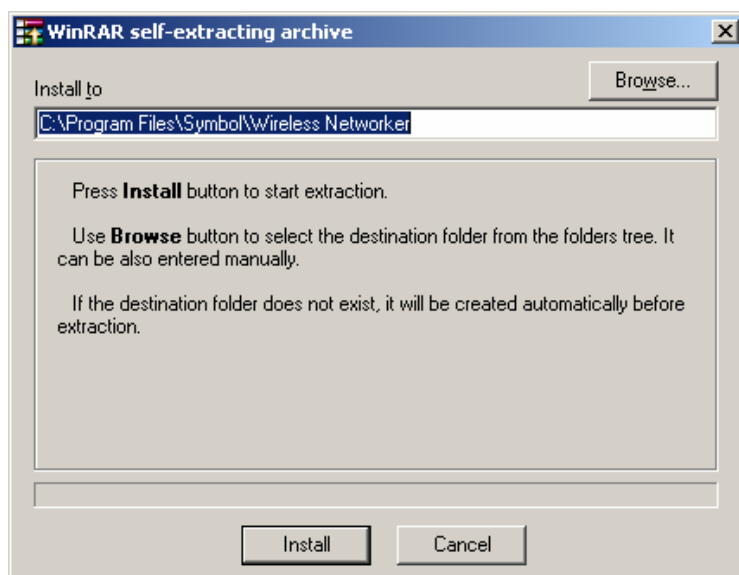
1. Ensure the previously installed Symbol Wireless Networker 802.11 a/g Configuration Utility and driver has been removed (if necessary).
2. Download the driver (for use with Zero Config) from the Symbol Web site [http://www.symbol.com/services/downloads/wn\\_abg\\_drivers.html](http://www.symbol.com/services/downloads/wn_abg_drivers.html).

A **File Download** window displays prompting the user to either open the driver and software installer or save the installation package to the system.

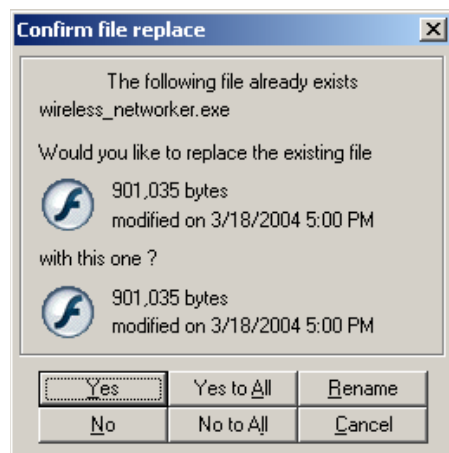


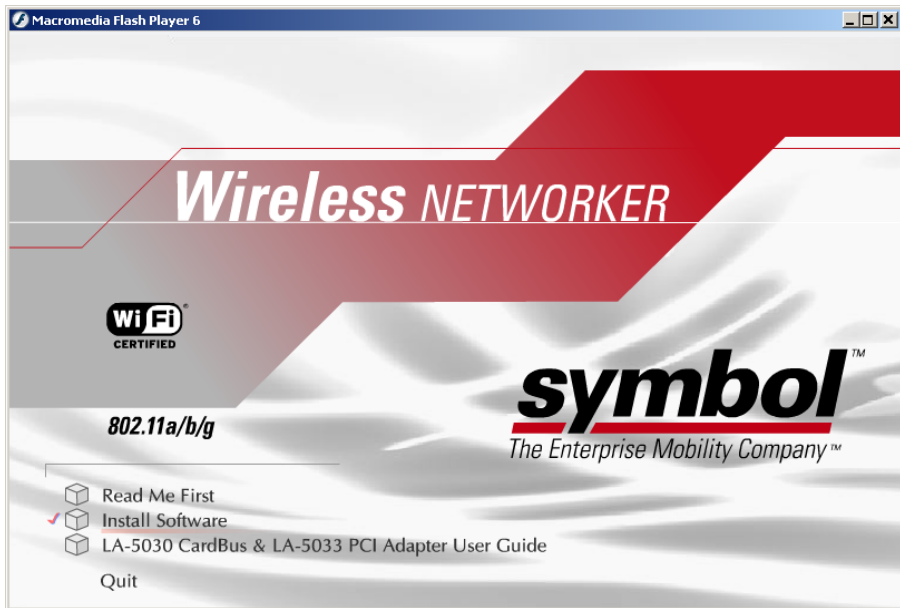
To manually install the driver and software package select **Save**, define a destination location for the driver and software package and follow the prompts displayed by the installer.

3. Install the driver from the self-extractable binary **Wireless Networker\_RC38Update.exe**. Define a destination location for the driver and follow the prompts displayed by the installer. Click the **Install** button.



If a **Confirm file replace** window displays, click the **Yes to all** button to continue.





The **Symbol Wireless Networker Install Menu** displays.

4. Select the **Install Software** option.

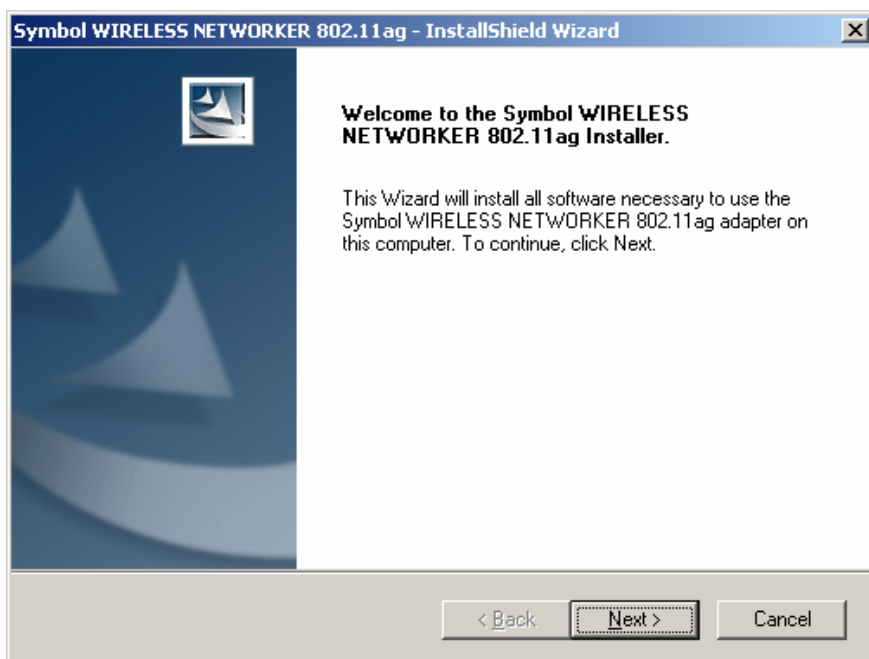
The **Symbol Wireless Networker Setup Wizard** displays.



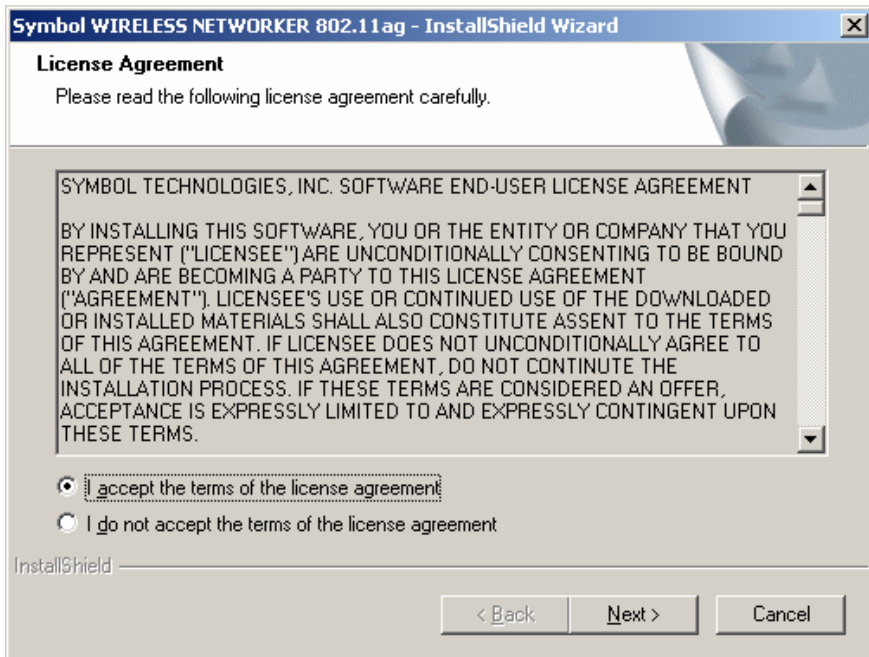
5. Select the **Install device driver only** checkbox. Click **OK**. If a previous version of the driver exists on the system, the software will detect it and uninstall it.

A **Symbol Wireless Networker 802.11ag driver - InstallShield Wizard** displays.

6. Click **Next** to continue the Windows 2000 (Service Pack 4) driver installation.

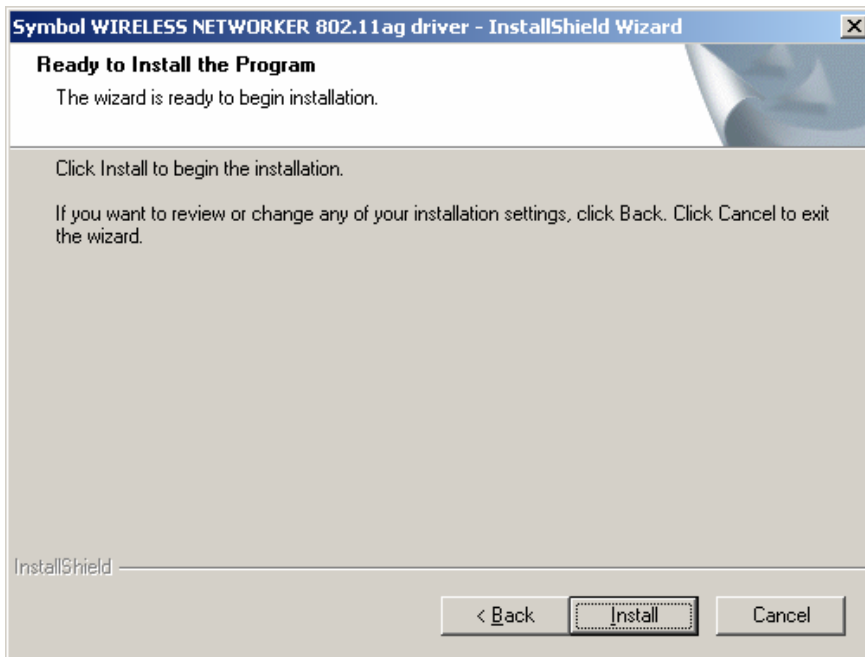


A **License Agreement** window displays.



7. Select **I accept the terms of the license agreement**. Click **Next**.

A **Ready to Install the Program** window displays.



8. Click **Install**.



**Note**

If a **Select Hardware** window displays prompting the user to remove/re-install/keep the previous driver, select **Remove previously installed driver**. This window displays if the user had the driver-only installation option selected previously.



**Note**

If a **Digital Signature Not Found** window displays stating the installation package has not passed Windows Logo testing, click **Yes** to continue the installation.

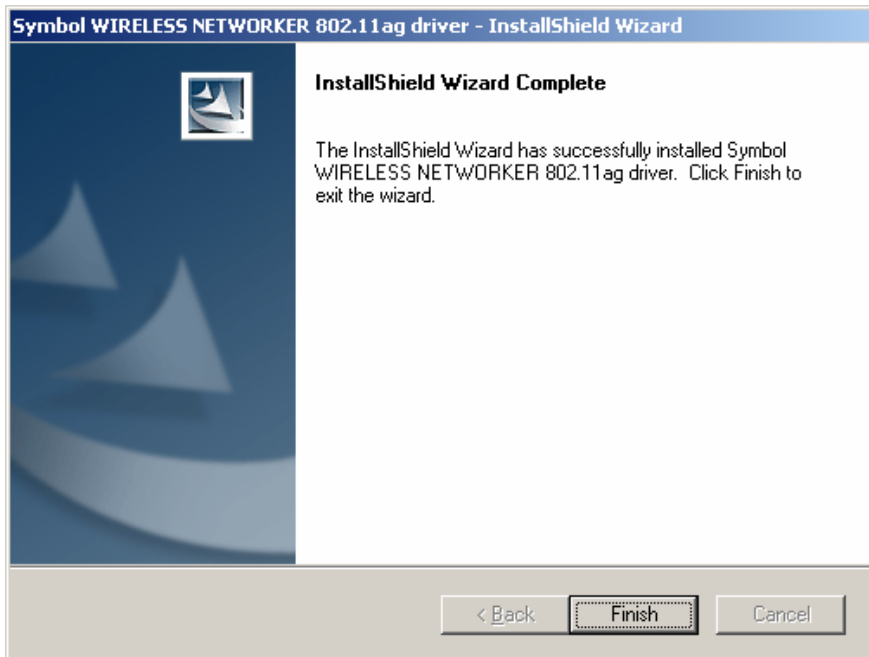
9. If the PC Card is already installed, complete the steps prompted by the Windows **Found New Hardware Wizard**.
10. If the PC Card is not installed in the system, insert the card firmly without forcing until it sits snugly.

The Windows **Found New Hardware** window displays. The system detects the new hardware and installs the device automatically.



In the event that a **Digital Signature Not Found** window displays stating the installation has not passed Windows Logo testing, click **Yes** to continue the installation.

11. An **InstallShield Wizard Complete** window displays. Click **Finish**.



Once the driver has been installed successfully, the link LED on the PC Card illuminates. Consult the system administrator for information on using the Windows 2000 Zero Config utility to manage the LA-5030 PC Card.

## 5.3 Removing the PC Card Driver in Windows 2000

If an existing version of the LA-5030 driver exists in the system, uninstall it and install the latest version from the Symbol Web site

[http://www.symbol.com/services/downloads/wn\\_abg\\_drivers.html](http://www.symbol.com/services/downloads/wn_abg_drivers.html).

To remove a LA-5030 driver from the system in Windows 2000:

1. Click **Start, Settings** and select **Control Panel**.
2. Select **System** and click on the **Hardware** tab.
3. Click the **Device Manager** button.
4. Double-click **Network Adapters**.

A list of the devices currently supported on the system by Windows 2000 displays.

5. Right-click on the Symbol LA-5030 Wireless Networker 802.11 a/g CardBus Adapter and select **Uninstall**.

A Confirm Device Removal window warns the user the system will uninstall the device.

6. Select **OK**.

Install the driver again, either with the Wireless Networker Configuration Utility or as a standalone driver installation.

## ***Windows XP LA-5030 PC Card Installations***

Symbol supports two different install options for the LA-5030 PC Card in Windows XP (using either Windows XP Service Pack 1 or 2).

Use the adapter with the Symbol driver and recommended Symbol Wireless Networker 802.11 a/g Configuration Utility for optimal feature availability. This installation option disables the user from using the Windows XP Zero Config utility or third party supplicants. Refer to [\*Installing the LA-5030 PC Card Driver and Configuration Utility in Windows XP on page 6-2\*](#) for installation information.

Use the Symbol driver with the Windows XP supplied Zero Config utility to support a third part software supplicant. Zero Config and Symbol Wireless Networker 802.11 a/g Configuration Utility cannot be used simultaneously. Refer to [\*Installing the Driver in Windows XP For Use With the Zero Config Utility on page 6-13\*](#) for installation information.

Go to [http://www.symbol.com/services/downloads/wn\\_abg\\_drivers.html](http://www.symbol.com/services/downloads/wn_abg_drivers.html) and download the driver and Symbol Wireless Networker 802.11 a/g Configuration Utility installer. Once downloaded, extract the files to the computer hard drive.

## 6.1 Installing the LA-5030 PC Card Driver and Configuration Utility in Windows XP

Installing the LA-5030 driver in Windows XP (using either Service Pack 1 or 2) requires the user to replace the Symbol LA-5030 driver provided by the Windows XP operating system with a newer version of the driver downloaded from the Symbol Web site. If there is a version of the LA-5030 Symbol Wireless Networker 802.11 a/g Configuration Utility and driver in the computer, uninstall it.

If there is a version of the Symbol Wireless Networker 802.11 a/b/g Configuration Utility and driver in the computer, the software (*Wireless\_Networker\_RC38Update.exe*) conducts an upgrade where it detects the current version, removes it and starts installing the latest version.

In case the user wants to remove the driver and Configuration Utility from the system manually: *Select Start -> Programs -> Symbol Wireless Networker -> Uninstall*. The user can also use the Windows Add/Remove Programs feature to remove the Configuration Utility and driver.

To install the LA-5030 PC Card driver and Configuration Utility in Windows XP (using either Service Pack 1 or 2):

1. Ensure the previously installed Symbol Wireless Networker 802.11 a/g Configuration Utility and driver have been removed (if necessary).
2. Download the driver and Symbol Wireless Networker 802.11 a/g Configuration Utility from the Symbol Web site ([http://www.symbol.com/services/downloads/wn\\_abg\\_drivers.html](http://www.symbol.com/services/downloads/wn_abg_drivers.html)).

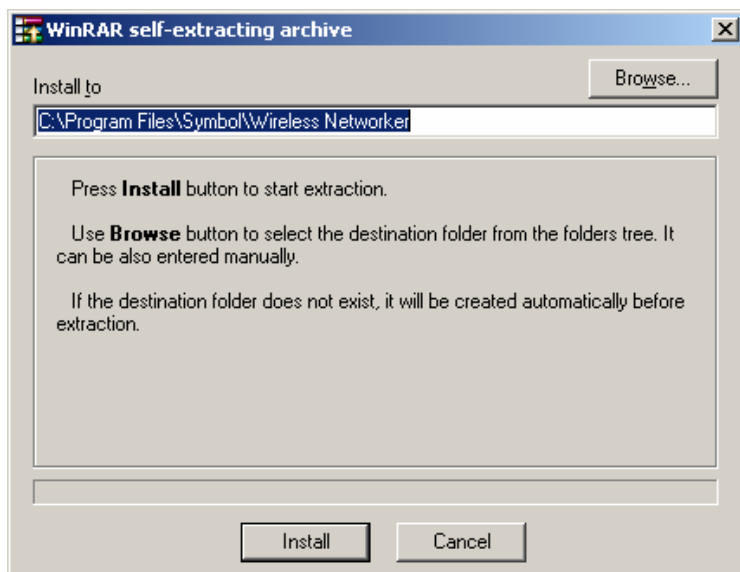
A **File Download** window displays prompting the user to either open the driver and software installer or save the installation package to the system.



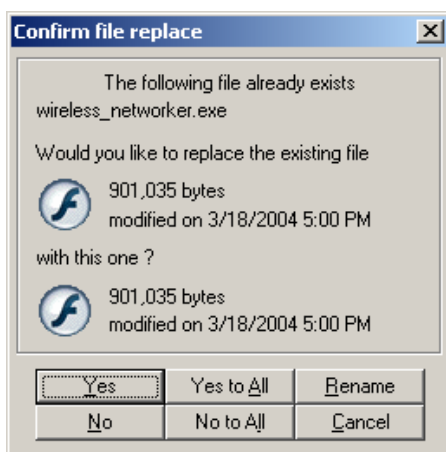
**Note**

To manually install the driver and software package select **Save**, define a destination location for the driver and software package and follow the prompts displayed by the installer.

3. Install the driver from the self-extractable binary **Wireless Networker\_RC38Update.exe**. Define a destination location for the driver and software package and follow the prompts displayed by the installer. Click the **Install** button.



If a **Confirm file replace** window displays, click the **Yes to all** button to continue.



The **Symbol Wireless Networker Install Menu** displays.



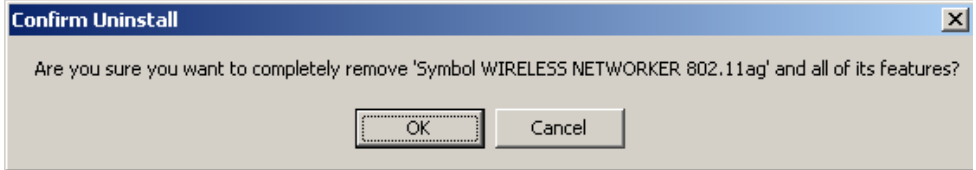
4. Select the **Install Software** option.

The **Symbol Wireless Networker Setup Wizard** displays.

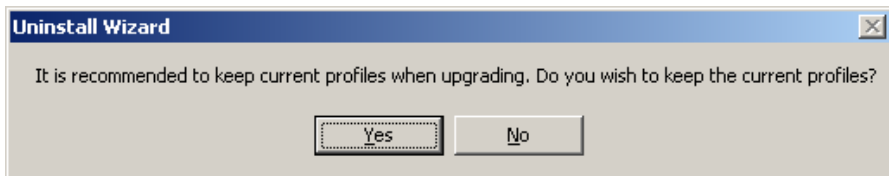


5. Select the **Install device driver and configuration utility** checkbox. Click **OK**.
6. If this is a first time software and driver installation, proceed to step 10. If the current installation is an upgrade, the software detects the previous version and begins to uninstall it, continue with step 7.

7. While uninstalling, a **Confirm Uninstall** window displays prompting for a confirmation for uninstalling the previous version. Click **OK** to continue the uninstall process.



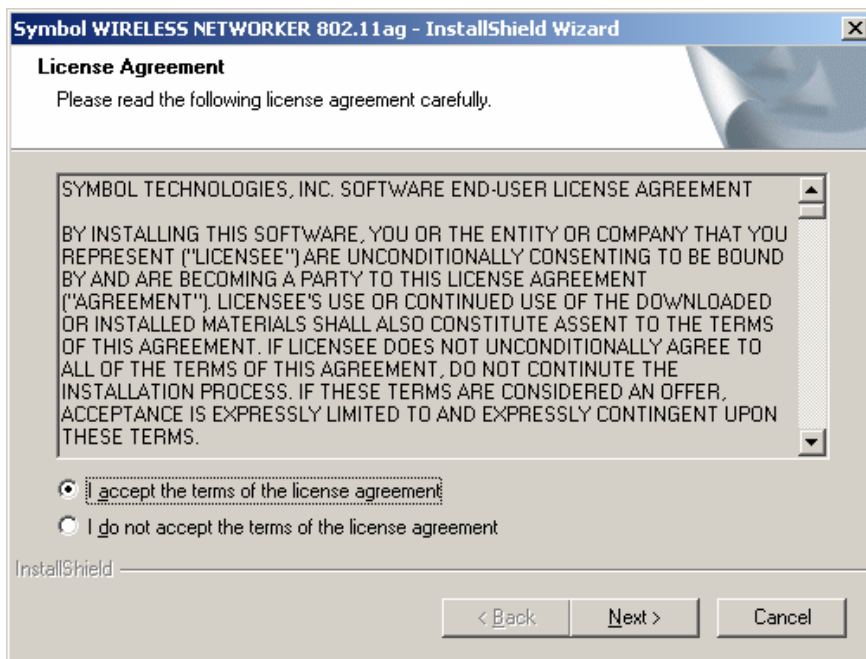
8. An **Uninstall Wizard** displays prompting for the user to save existing adapter profiles. Symbol recommends clicking **Yes** to archive the profile information.



The **Maintenance Complete** window displays.

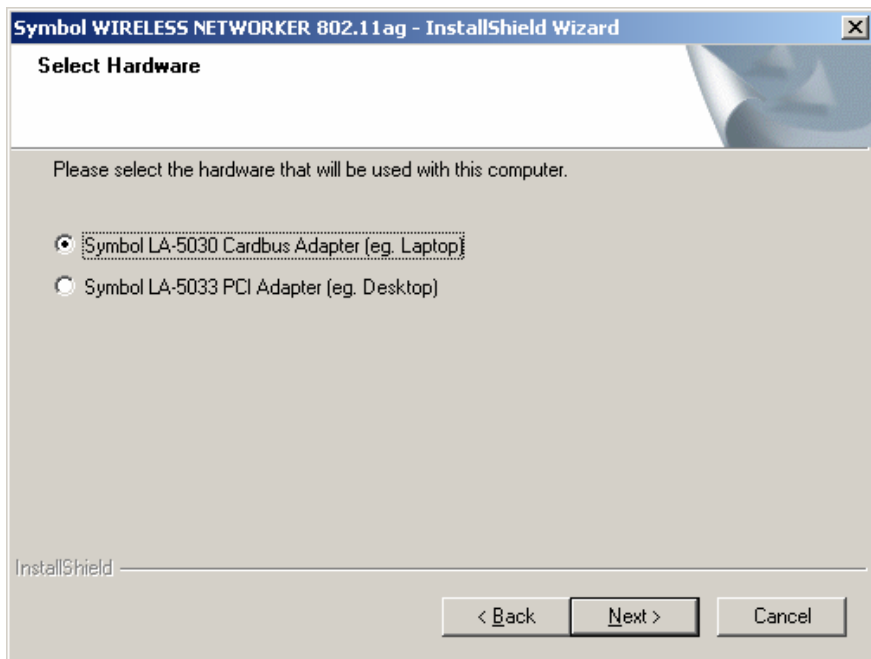
9. Click **Finish** to complete the driver software removal.  
A **Symbol Wireless Networker 802.11a/g - InstallShield Wizard** displays.
10. Click **Next** to continue the Windows XP driver and Symbol Wireless Networker 802.11 a/g Configuration Utility installation.

A **License Agreement** window displays.



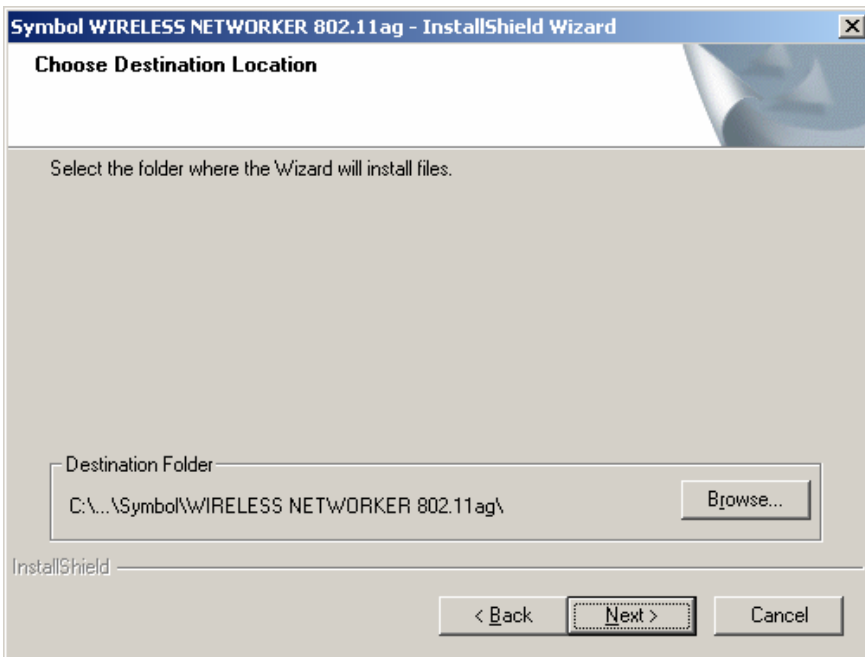
11. Select **I accept the terms of the license agreement**. Click **Next**.

A **Select Hardware** window displays.



12. Select **Symbol LA-5030 Cardbus Adapter (eg. Laptop)**. Click **Next**.

A **Choose Destination Location** window displays prompting the user to confirm the destination folder for the application software.



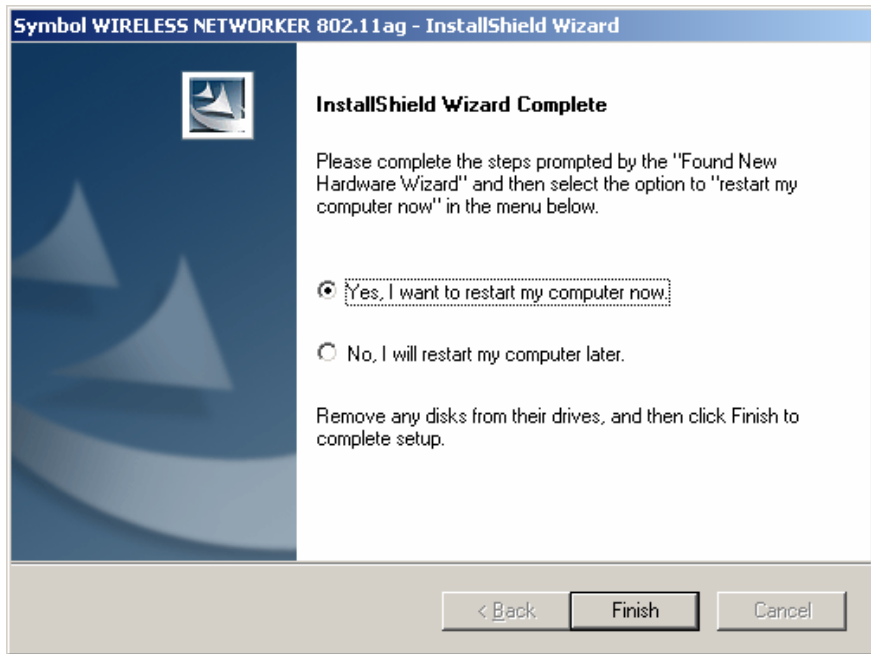
13. Click **Next** to continue using the default path, or click **Browse** to specify a different location for the software.

The InstallShield Wizard begins installing the Configuration Utility and driver.



If a **Software Installation** window displays stating the installation package has not passed Windows Logo testing, click **Continue Anyway** to continue with the installation.

14. If the PC Card is already installed in the system, complete the following. If the PC Card is not installed, proceed to step 15.
  - a. Complete the steps as prompted by the installer.



- b. When the **InstallShield Wizard** is completed, select **Yes, I want to restart my computer now**. The **Found New Hardware** window displays and Windows begins installing the driver and software package. Proceed to step 16.
15. If the PC Card is not installed in the system, complete the following:
  - a. Select the **Yes, I want to restart my computer now** button.
  - b. Click **Finish**.
  - c. When the system reboots, align the PC Card properly before inserting it in the slot.
  - d. Insert the PC Card firmly without forcing until it sits snugly.

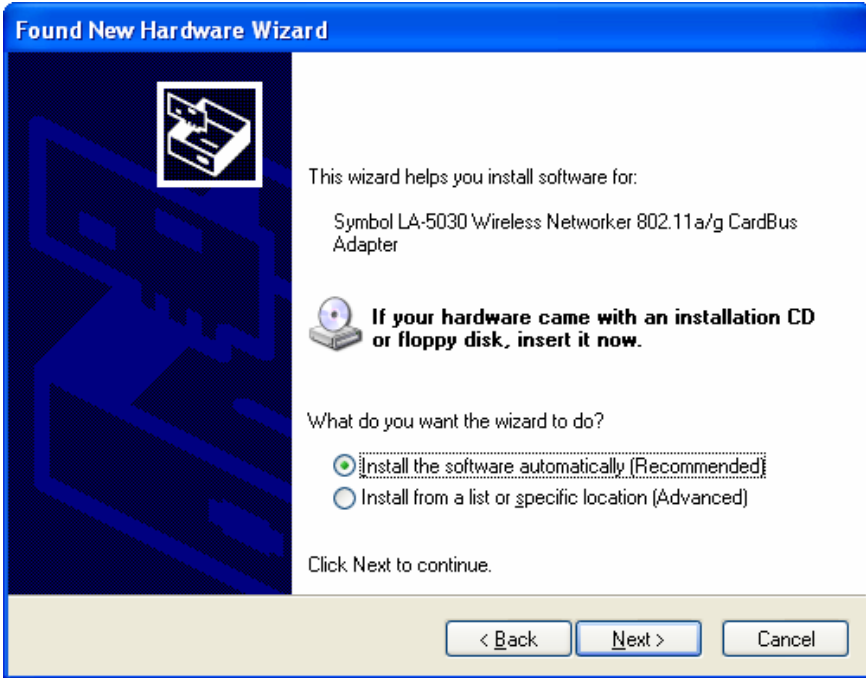
The Windows **Found New Hardware** window displays.

The Windows **Found New Hardware Wizard** displays.



16. Select **No, not this time**, and click **Next**.

The Windows **Found New Hardware Wizard** displays again.



17. Select **Install the software automatically [Recommended]** and click **Next**. The system detects the new hardware and installs the device automatically.



**Note**

If a **Hardware Installation** window displays stating the PC Card has not passed Windows Logo testing, click **Continue Anyway** to continue with the installation.

The Found New Hardware Wizard displays a message stating the wizard has completed the adapter software installation.

18. Click **Finish** to close the wizard and complete the installation.

Once the driver has been installed successfully, the link LED on the PC Card illuminates. The Configuration Utility icon displays in the task tray.



19. Double-click on the Configuration Utility icon to display the utility. Select the **Find WLANs** tab and select the network ESSID best suited to the signal strength and interoperability requirements for the adapter. The user is ready to use the PC Card with the Configuration Utility.

Proceed to Appendix A [Using the Configuration Utility](#) for information on using the Configuration Utility to manage the LA-5030 PC Card.

## 6.2 Installing the Driver in Windows XP For Use With the Zero Config Utility

Use the Windows XP Zero Config Utility as the PC Card management tool if using the LA-5030 PC Card without the Symbol Wireless Networker 802.11 a/g Configuration Utility.

If there is a version of the Symbol Wireless Networker 802.11 a/b/g Configuration Utility and driver in the computer, the software (*Wireless Networker\_RC38Update.exe*) performs an upgrade by detecting the current version, removing the current version and installing the latest version.

Select *Start->Program->Symbol Wireless Networker->Uninstall* to remove the Configuration Utility and driver simultaneously. Alternatively, the user can use the Windows Add/Remove Programs option to remove the Configuration Utility and driver.

To install the LA-5030 PC Card and driver without the Symbol Configuration Utility in Windows XP (using Service Pack 1 or 2):

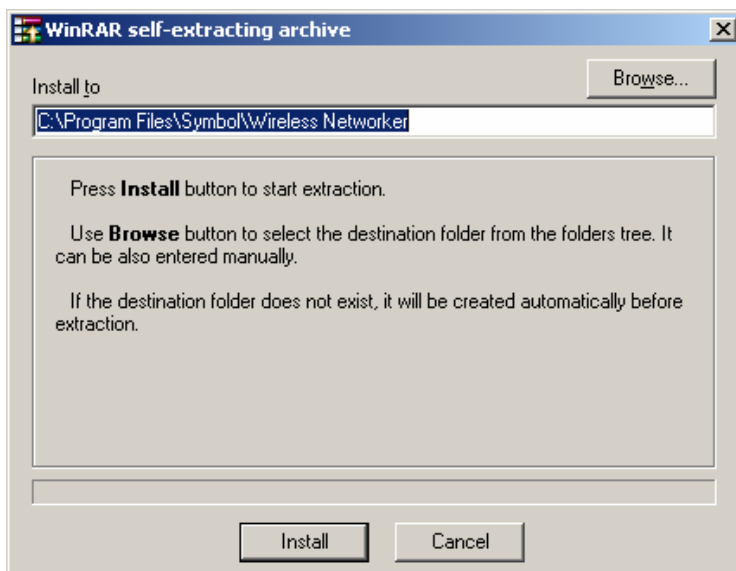
1. Ensure the previously installed Symbol Wireless Networker 802.11 a/g Configuration Utility and driver has been removed (if necessary).
2. Download the driver (for use with Zero Config) from the Symbol Web site [http://www.symbol.com/services/downloads/wn\\_abg\\_drivers.html](http://www.symbol.com/services/downloads/wn_abg_drivers.html).

A **File Download** window displays prompting the user to either open the driver and software installer or save the installation package to the system.

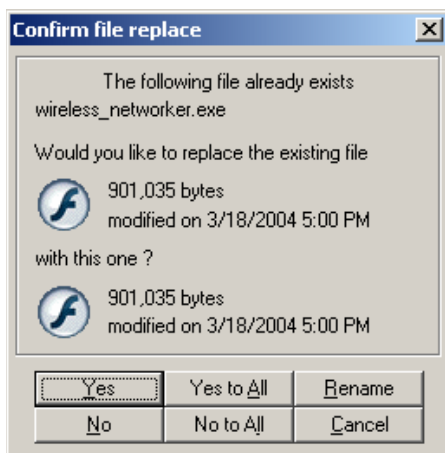


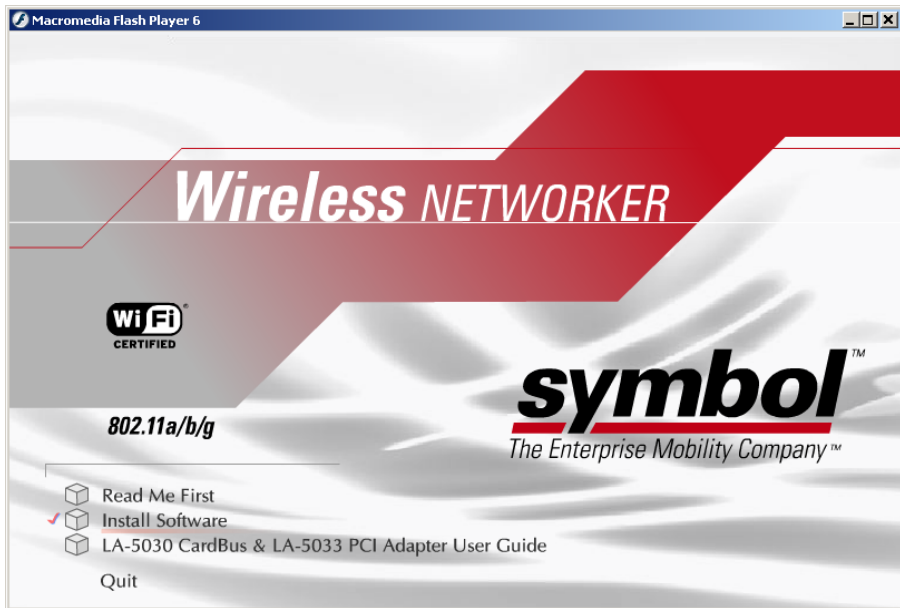
To manually install the driver and software package select **Save**, define a destination location for the driver and software package and follow the prompts displayed by the installer.

3. Install the driver from the self-extractable binary **Wireless Networker\_RC38Update.exe**. Define a destination location for the driver and follow the prompts displayed by the installer. Click the **Install** button.



If a **Confirm file replace** window displays, click the **Yes to all** button to continue.

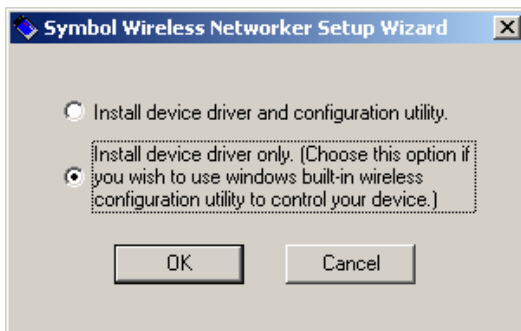




The **Symbol Wireless Networker Install Menu** displays.

4. Select the **Install Software** option.

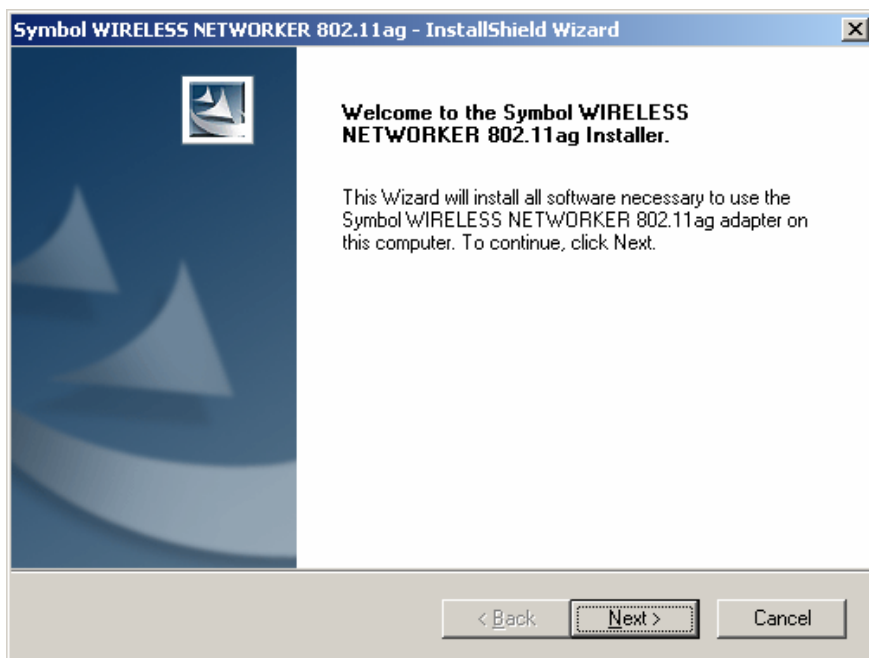
The **Symbol Wireless Networker Setup Wizard** displays.



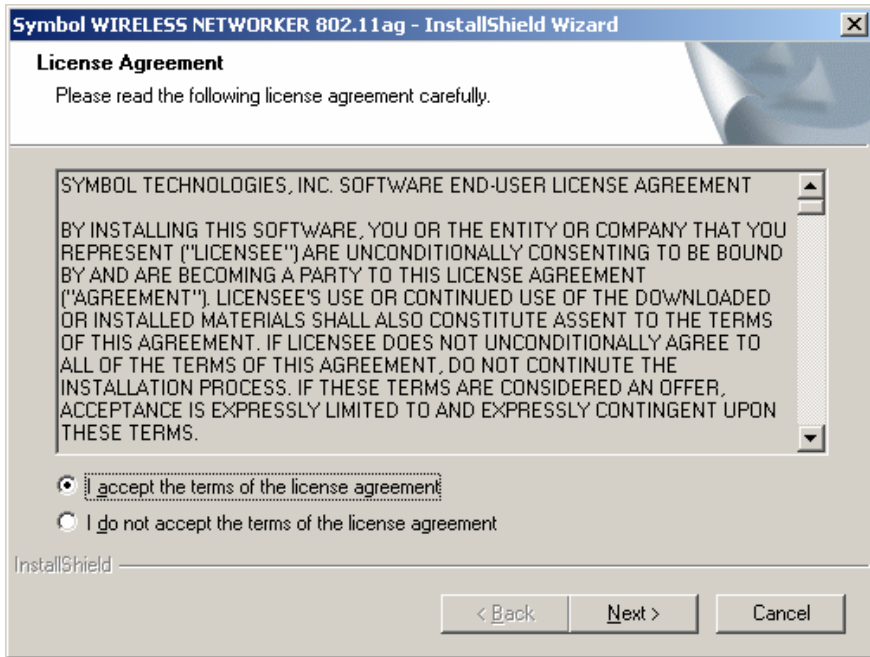
5. Select the **Install device driver only** checkbox. Click **OK**. If a previous version of the driver exists on the system, the software will detect it and uninstall it.

A **Symbol Wireless Networker 802.11ag driver - InstallShield Wizard** displays.

6. Click **Next** to continue the Windows XP (using Service Pack 1 or 2) driver installation.

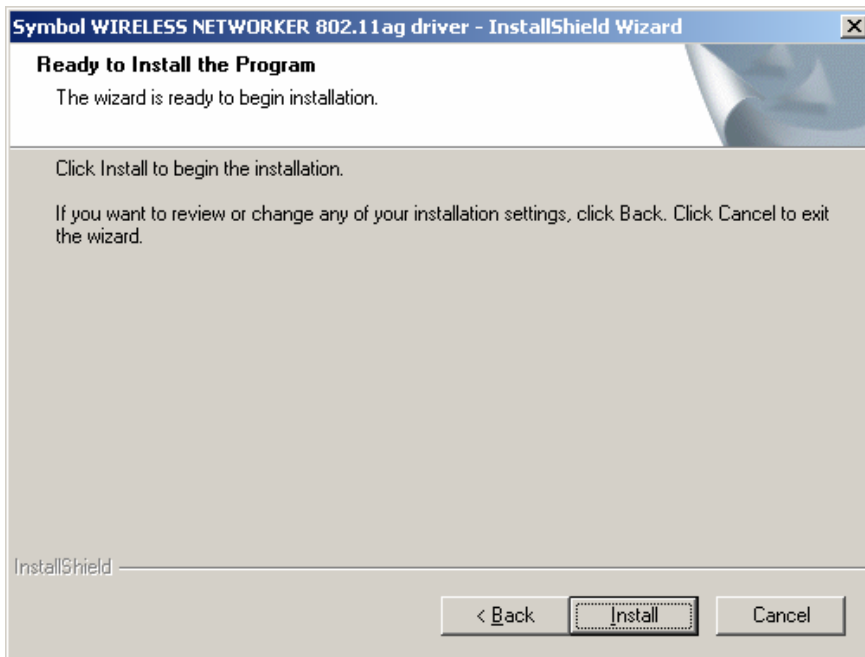


A **License Agreement** window displays.



7. Select **I accept the terms of the license agreement**. Click **Next**.

A **Ready to Install the Program** window displays.



8. Click **Install**.

The InstallShield Wizard begins installing the driver.



**Note**

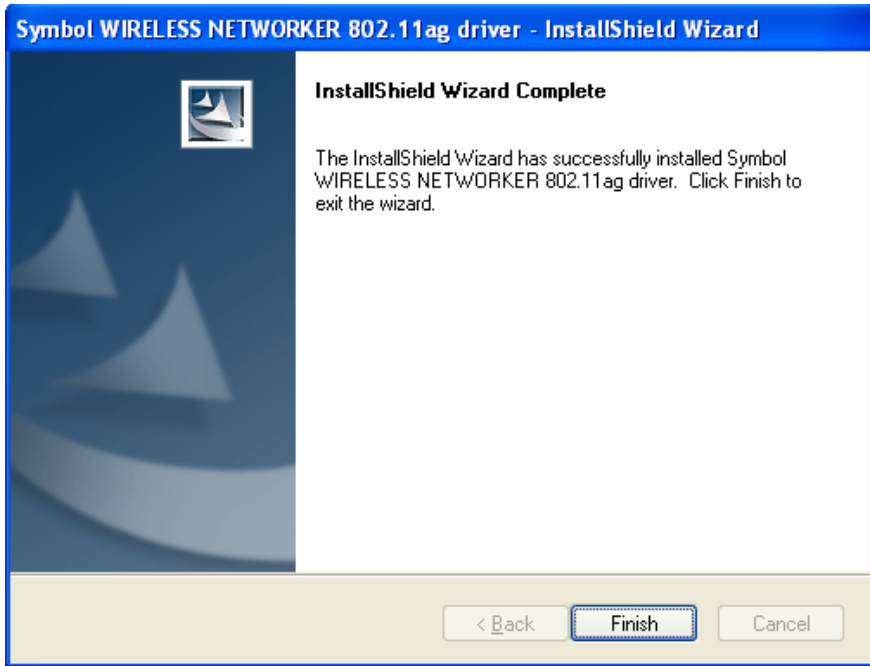
If a **Select Hardware** window displays prompting user to remove/re-install/keep the previous driver, select **Remove previously installed driver**. This window displays if the user used the driver-only option previously.



**Note**

If a **Software Installation** window displays stating the installation has not passed Windows Logo testing, click **Continue Anyway** to continue the installation.

The **InstallShield Wizard Complete** window displays.



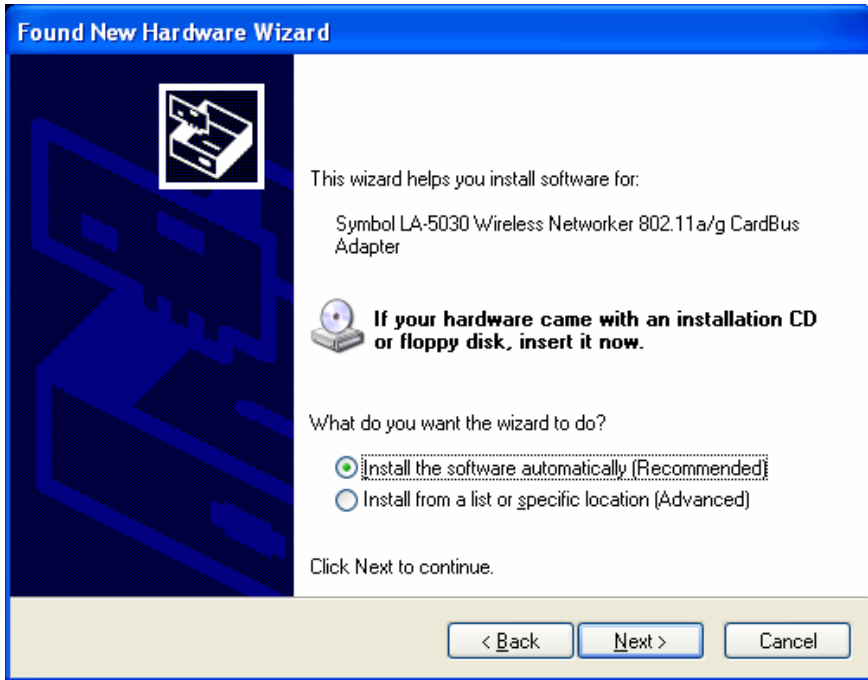
9. Click **Finish**.
10. If the PC Card is not installed in the system:
  - a. Align the card properly before inserting it in the slot.
  - b. Insert the card firmly without forcing until it sits snugly.

The Windows **Found New Hardware Wizard** displays.



11. Select **No, not this time**, and click **Next**.

The Windows **Found New Hardware Wizard** displays again.



12. Select **Install the software automatically [Recommended]** and click **Next**. The system detects the new hardware and installs the device automatically.

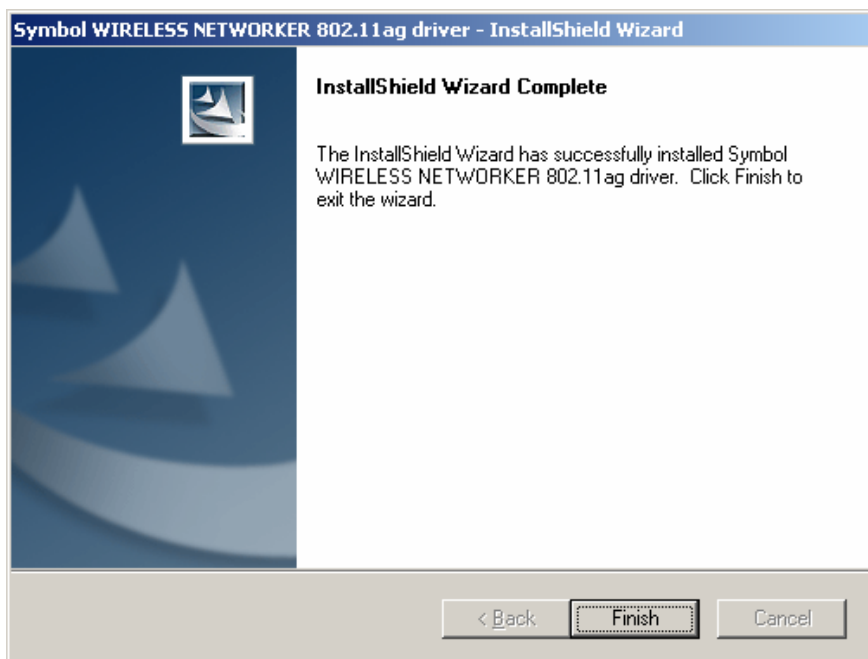


**Note**

If a **Hardware Installation** window displays stating the PC Card has not passed Windows Logo testing, click **Continue Anyway** to continue with the installation.

The Found New Hardware Wizard displays a message stating the wizard has completed the adapter software installation.

13. Click **Finish** to close the wizard and complete the installation.



Once the driver has been installed successfully, the link LED on the PC Card illuminates. Consult the system administrator for information on configuring the Symbol PC Card using the Windows XP Zero Config utility.

## 6.3 Removing the PC Card Driver in Windows XP

If an existing version of the LA-5030 driver exists in the system, uninstall it and install the latest version from the Symbol Web site

[/http://www.symbol.com/services/downloads/wn\\_abg\\_drivers.html](http://www.symbol.com/services/downloads/wn_abg_drivers.html).

To uninstall a driver from the system in Windows XP:

1. Click **Start** and select **Control Panel**.
2. Select the **Switch to Classic View** Windows XP option.
3. Select **System** and click on the **Hardware** tab.
4. Click the **Device Manager** button. Double-click **Network Adapters**.  
A list of the devices currently supported on the system by Windows XP displays.
5. Right-click on the Symbol LA-5030 Wireless Networker 802.11a/g CardBus Adapter and select **Uninstall**.  
The **Confirm Device Removal** window warns the user the system will uninstall the device.
6. Select **OK**.  
Proceed to [Installing the LA-5030 PC Card Driver and Configuration Utility in Windows XP on page 6-2](#) and reinstall the driver either with the Wireless Networker Configuration Utility or as a standalone driver installation.



# A

## ***Using the Configuration Utility***

### **A.1 Installing the Configuration Utility**

The Symbol Wireless Networker 802.11 a/g Configuration Utility comes bundled with the adapter. The driver and Symbol Wireless Networker 802.11 a/g Configuration Utility are available from the Symbol Web site at

[http://www.symbol.com/services/downloads/wn\\_abg\\_drivers.html](http://www.symbol.com/services/downloads/wn_abg_drivers.html)

Use Symbol Wireless Networker 802.11 a/g Configuration Utility to view and configure the adapter settings.

## A.2 About the Configuration Utility

Use the Configuration Utility to configure the Symbol Wireless Networker and monitor its connection status. Once installed, the Symbol Wireless Networker 802.11 a/g Configuration Utility starts automatically and appears as an icon in the task tray. The status icon changes in real-time to reflect the signal strength and availability of the adapter and the wireless network.

Right-click the icon in the task tray and select **Show Utility** to open the utility. To open the utility from the Windows menu, select *Start->Programs->Symbol Wireless Networker-> WIRELESS NETWORKER 802.11ag Utility*. When the Configuration Utility icon resides in the task tray, it can also be opened by double-clicking the icon. Select **Exit** to close the Configuration Utility and remove the icon from the task tray.

The Configuration Utility contains five property pages:

**Status Page** - Provides information about the current link between the card and its wireless network connection.

**WLAN Profiles Page** - Allows the user to customize the settings of the wireless card and wireless network.

**Find WLAN Page** - Displays a list of APs and clients available to the wireless card.

**Advanced Page** - Use the Advanced page to configure network band, power savings, and domain settings for the wireless connection.

**Info Page** - Displays software and hardware version information.

## A.3 Configuration Utility Task Tray Icons

The Configuration Utility icon provides at-a-glance feedback about the Wireless Networker's status by changing color.



The Wireless Networker associates with a network device and the link quality is **excellent**.



The Wireless Networker associates with a network device and the link quality is **very good**.



The Wireless Networker associates with a network device and the link quality is **good**.



The Wireless Networker associates with a network device and the link quality is **fair**.



The Wireless Networker associates with a network device but the link quality is **poor**.



The adapter can't build a wireless network.



The adapter associates with a wireless network in Ad-hoc mode.

## A.4 Status Page

Double-click the Configuration Utility icon to display the Configuration Utility window. The window displays related information about the Status page. The **Status** page provides information about the current link between the adapter and its wireless network connection. The Status page is read only with no configurable parameters.

**Symbol WIRELESS NETWORKER 802.11a/g**

Status | WLAN Profiles | Find WLANs | Advanced | Info

ESS ID: A6CT97

Link Status: Connected Reconnect

Network Settings:

Channel: 11 Security: WEP

Transfer Rate: 11 Current IP: 157.235.90.165

Network Type: Infrastructure

Packets In: 62693 Packets Out: 3287

Signal Strength: -57dBm (73%)

Signal Quality: 42%

OK Cancel Help

**ESS ID** - The Extended Service Set Identifier (ESSID) of the wireless network used by the adapter. Use the ESSID to determine the wireless network a wireless card can connect to. The name is case-sensitive and cannot exceed 32 characters.

**Link Status** - The current connection status of the card. There are two possibilities:

- **Connected:** The adapter has associated with a wireless network.
- **Disconnected:** The adapter has been inserted in the system, but has not associated with a wireless network.

**Reconnect** - Use the Reconnect button to scan for available wireless networks. The adapter might not be able to establish a connection to the specified network because of link quality. Use the Reconnect button to locate available WLAN networks with acceptable link quality.

**Channel** - The channel the card is currently using. The possible channels are 1 through 11, as well as A-band channels.

**Security** - The security used on the current wireless connection. There are five possibilities:

- **Disabled:** The connected device is operating without any security.
- **WEP:** The connected device is using WEP.
- **WPA-PSK:** The connected device is using WPA-PSK.
- **WPA-Radius:** The connected device is using WPA-Radius.
- **Radius:** The connected device is using Radius.

**Transfer Rate** - The current transfer rate in megabits per second. The possible transfer rates are 1, 2, 5.5, 6, 9, 11, 18, 24, 36, 48, and 54 Mbps. Transfer Rate varies dynamically based on the link quality on the wireless connection.

**Network Type** - The type of network the wireless card is connected to. The possible network types are: Infrastructure and Ad-hoc.

**Current IP** - The IP address of the current wireless connection.

**Packets In/Packets Out** - The amount of data transmitted and received by the wireless card since its last association.

**Signal Strength** - The blue bar indicates the strength of the signal between the wireless card and its associated wireless device. A dBm value is shown along with a percentage value. A higher percentage indicates better signal strength.

**Signal Quality** - Signal Quality is a Signal to Noise Ratio (SNR) indication displayed in percentage. It demonstrates how “noisy” the current environment is. A higher value indicates a better wireless environment.

## A.5 WLAN Profiles Page

Use the WLAN Profile Page to configure the adapter and wireless network.

The screenshot shows the 'Symbol WIRELESS NETWORKER 802.11 a/g' window with the 'WLAN Profiles' tab selected. The window is divided into two main sections: 'Profile Selection' and 'Profile Settings'.

**Profile Selection:** A dropdown menu shows 'A6CT97'. To its right are 'Create New' and 'Remove' buttons.

**Profile Settings:** This section contains five configuration fields:

- ESS ID:** A text box containing 'A6CT97'.
- Operating Mode:** A dropdown menu set to 'Infrastructure'.
- Network Band:** A dropdown menu set to 'Mixed'.
- Network Channel:** A dropdown menu set to '1'.
- Network Security:** A dropdown menu set to 'WEP'.

At the bottom of the 'Profile Settings' section are 'Save' and 'Activate' buttons. At the very bottom of the window are 'OK', 'Cancel', and 'Help' buttons.

**Profile Selection** - The profile selection setting allows the user to save different configurations for different working environments. The default profile contains the configuration settings when the card is initially installed. Create a new profile by selecting the **Create New** button. An **Input Dialog** box displays prompting for the profile name. After a profile name is entered, make additional changes to the profile as required for its intended operating environment. Click **Save** to save the changes, or click **Activate** to save the changes and make a wireless connection. To modify an existing profile, select the profile from the dropdown list and make the required changes. To remove an existing profile, select the profile from the dropdown menu and click **Remove**.

**ESS ID** - The network name determines the wireless network a wireless card can connect to. The name is case-sensitive and cannot exceed 32 alpha numeric characters. The default ESSID is 101.

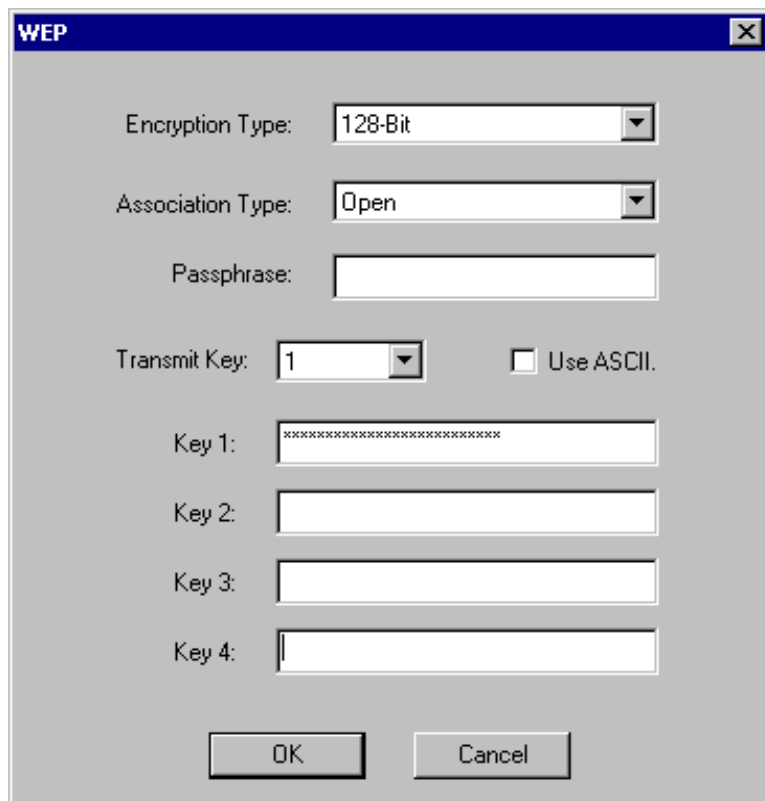
**Operating Mode** - The operating mode setting determines the architecture of the wireless network. Select Ad-Hoc or Infrastructure depending on network type. **Ad-Hoc** is used for peer-to-peer networks. It allows sharing of local resources between wireless cards without using a wireless Access Point. **Infrastructure** allows a wireless card to be integrated into an existing network through an access point. Infrastructure networks permit roaming between access points while maintaining a connection to all network resources and providing additional features, such as power saving and extended range.

**Network Band** - The network band options are Mixed, 2.4 Ghz Band, and 5Ghz Band. Specify the band for the network in this location. The default is **Mixed**.

**Network Channel** - The channel setting is valid only when the Network Type is set to Ad-Hoc mode, and the target adapter is initiating an Ad Hoc network.

**Network Security** - Allows the configuration of the security setting for the profile. A security setting dialog box displays when selecting from the drop-down menu. There are 5 options: None, WEP, WPA-PSK, WPA-Radius and Radius. Each security type provides its own level of safety.

**Encryption Type** - Select the same encryption scheme used by the access point.



The image shows a Windows-style dialog box titled "WEP". It contains the following fields and controls:

- Encryption Type:** A dropdown menu currently set to "128-Bit".
- Association Type:** A dropdown menu currently set to "Open".
- Passphrase:** An empty text input field.
- Transmit Key:** A dropdown menu set to "1", followed by a checkbox labeled "Use ASCII." which is currently unchecked.
- Key 1:** A text input field containing 13 asterisks (XXXXXXXXXXXXXXXX).
- Key 2:** An empty text input field.
- Key 3:** An empty text input field.
- Key 4:** An empty text input field.
- At the bottom are two buttons: "OK" and "Cancel".

**Association Type** - Includes Open and Shared mode.

- **Open Mode:** With this setting any station in the wireless network devices can associate with an Access Point to receive and to transmit data.
- **Shared Mode:** With this setting only stations using a shared key encryption identified by the Access Point are allowed to associate with it.

**Passphrase** - Access Points can use an optional Passphrase. A Passphrase automatically generates WEP keys. The primary reason for using a Passphrase is to avoid using long and difficult to remember WEP keys. Enter the passphrase in the Passphrase field as required.

**Note**

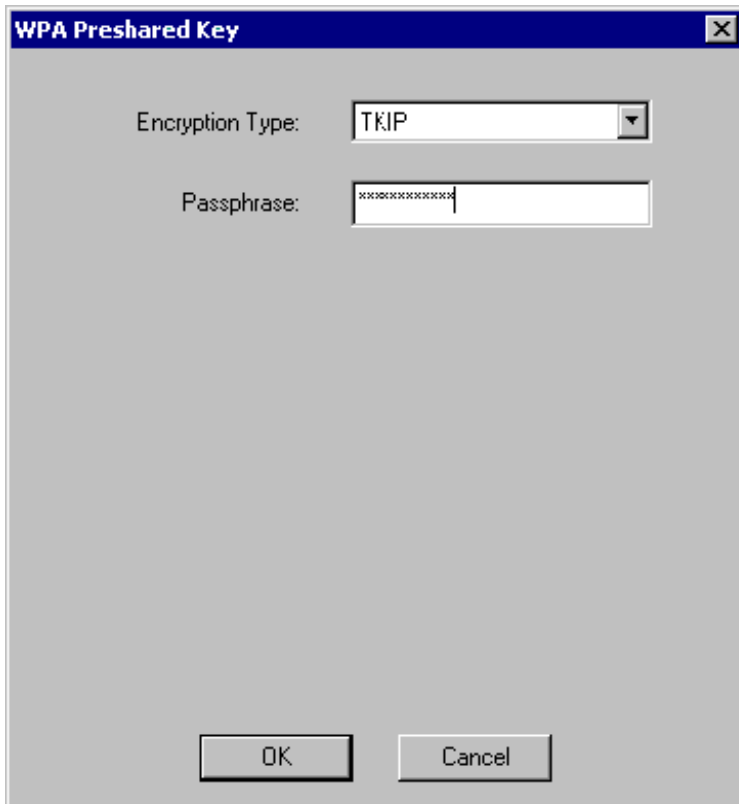
WEP keys are used for packet encryption. The Passphrase is used to save time. If a Passphrase is entered, the keys are generated in real time.

**ASCII** - The user can configure the WEP key by selecting the checkbox of ASCII and types the WEP key in key 1-4 fields manually.

**Transmit Key** - There are 4 WEP Keys available. Specify which key to use to encrypt the wireless packets by setting the Transmit Key.

- **Key 1** - The 1st WEP key used for packet encryption. The key can be either in HEX or ASCII format.
- **Key 2** - The 2nd WEP key used for packet encryption. The key can be either in HEX or ASCII format.
- **Key 3** - The 3rd WEP key used for packet encryption. The key can be either in HEX or ASCII format.
- **Key 4** - The 4th WEP key used for packet encryption. The key can be either in HEX or ASCII format.

**WPA-PSK** - WPA-PSK is another pre-shared key encryption method. In order to use this method, obtain the passphrase used by the target access point. Packets are encrypted based on the passphrase used.



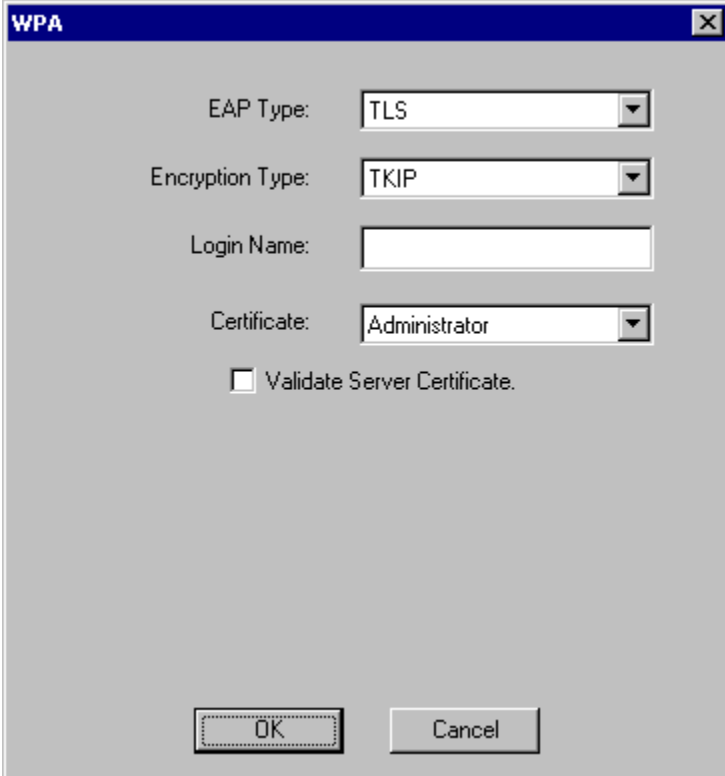
**Encryption Type** - TKIP and AES (Advanced Encryption Standard) are the encryption algorithms used on the packets

**Passphrase** - Enter the same passphrase (8-63 characters) used on the target access point.

**WPA-Radius** - WPA-Radius provides both packet encryption and network/user authentication. The packets are encrypted using an Auto algorithm. Verify the network as the target network in order for the user identity to be authenticated. WPA-Radius does not require a WPA passphrase. The server that authenticates the user identity issues a WPA passphrase automatically once it accepts the user identity.

**EAP Type** - EAP options include TLS, TTLS and PEAP.

**TLS** - TLS requires a login name and a certificate issued by the target Radius server. The login name and the certificate allow the Radius server to authenticate user identity. The user can choose to authenticate the identity of the Radius server by selecting the **Validate Server Certificate** checkbox.

A screenshot of a Windows-style dialog box titled "WPA". The dialog has a blue title bar with a close button (X) in the top right corner. The main area is light gray and contains the following controls: "EAP Type:" with a dropdown menu showing "TLS"; "Encryption Type:" with a dropdown menu showing "TKIP"; "Login Name:" with an empty text input field; "Certificate:" with a dropdown menu showing "Administrator"; and a checkbox labeled "Validate Server Certificate." which is currently unchecked. At the bottom, there are two buttons: "OK" and "Cancel".

WPA

EAP Type: TLS

Encryption Type: TKIP

Login Name:

Certificate: Administrator

☐ Validate Server Certificate.

OK Cancel

**TTLS** - TTLS requires a login name, password and additional TTLS protocols. The TTLS protocol is required to match the one on the target Radius server. Optionally authenticate the Radius server identity by checking the Validate Server Certificate checkbox.

**PEAP** - PEAP requires a login name, password and a PEAP protocol. The PEAP protocol is required to match the one used on the target Radius server. Optionally authenticate the Radius server identity by checking the Validate Server Certificate checkbox.

**Encryption Type** - TKIP and AES are the encryption algorithms used on the packets.

**Radius** - Radius is similar to WPA-Radius authentication; however, the user is not required to perform WPA encryption.

Click **OK** when finished to save the changes.

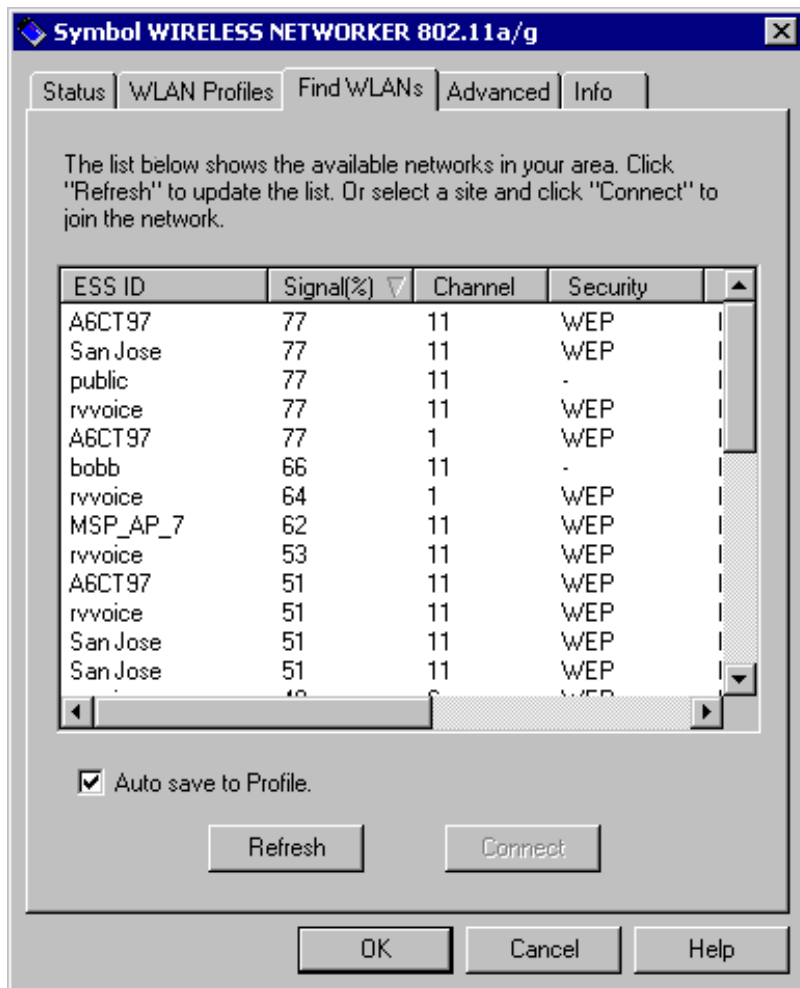


Updates to WPA-Radius Configuration Dialog not saved before exiting the page are deleted and not available.

**Note**

## A.6 Find WLANs Page

Use the **Find WLANs** page to display a list of access points and wireless adapters available to the wireless card.



Click the scroll bar to right to extend the information for each AP. Displayed AP information includes:

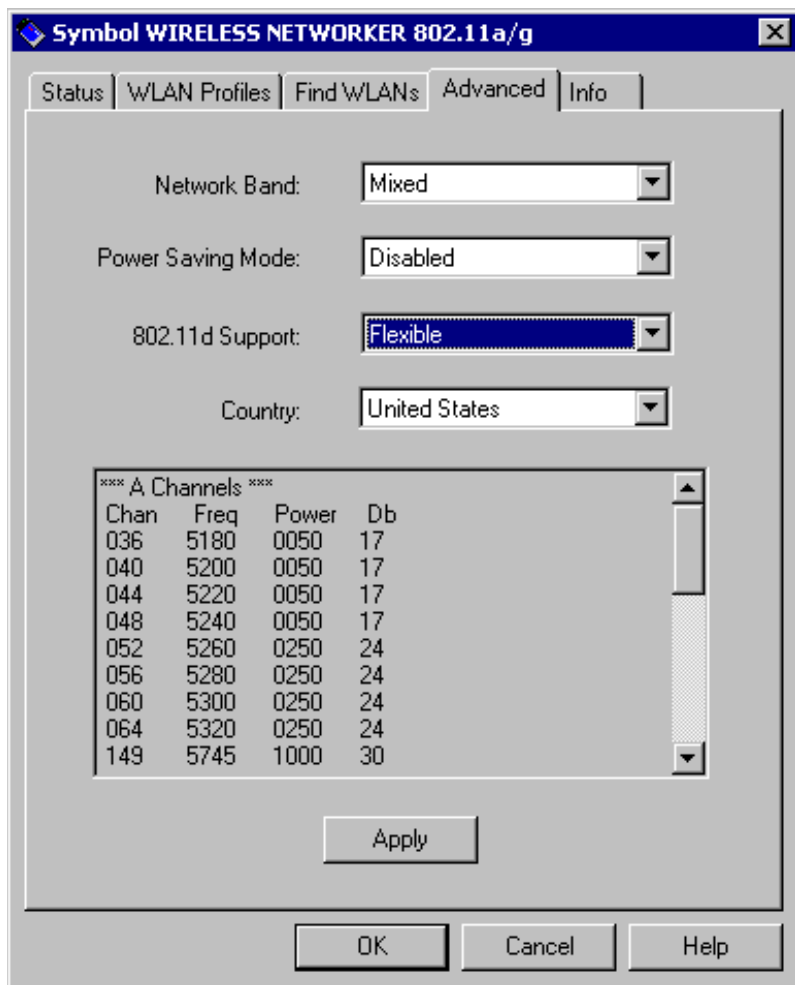
- **ESSID** - The name of access point or wireless adapter
- **Signal** - The signal is defined in percentages or dbm. Switch between these two units by right clicking on the column heading for Signal.
- **Channel** - The frequency the Access Point or wireless adapter uses
- **Security** - None, WEP, WPA-PSK, or WPA
- **BSS Type** - Infrastructure or Ad-Hoc
- **Mode** - The Mode is the maximum speed the AP can provide
- **MAC Address** - Address of access point or wireless adapter.

**Auto Save to Profile** - If the checkbox is selected, a profile is automatically saved after a successful connection is made. The Configuration Utility attempts to use the ESSID as the profile name first. It is silent if the profile does not exist yet, otherwise it prompts the user to enter a new profile name or overwrite the old one.

To refresh the list, click the **Refresh** button. When the search is finished, the list displays available access points and wireless adapters. To connect to one of the access points or wireless adapter on the list, select the desired AP or wireless adapter by clicking the ESSID field of the entry. Click **Connect** to connect to the access point or wireless adapter. If the network has security protection, a security dialog displays prompting for the required logon information.

## A.7 Advanced Page

Click the **Advanced** tab to display the network band, power consumption mode and country of operation information available to the adapter.



**Network Band** - Click the pull-down menu to select Mixed, 2.4Ghz Band or 5Ghz Band. If Mixed is selected, it takes more time for the adapter to find wireless devices supporting both bands. When 2.4Ghz or 5Ghz is selected, the adapter only operates in those bands and devices operating in different bands are not available to the adapter for association.

**Power Saving Mode** - There are 3 options: **Disabled**, **Dynamic** and **Maximum**. If selecting Disabled, the device does not conserve power. Select Maximum, to conserve as much power as possible. If Dynamic is selected, the device constantly switches between the power-saving state and awake state.

**802.11d Support** - 802.11d provides a means for communicating regulatory information among 802.11 stations. The information includes the country of operation, defined and permissible channels and the output power limits that apply to the channels. There are 3 options:

- **Disabled** - The device uses its built-in country list to determine the set of valid channels and their corresponding output power limits. The device scans actively on these channels.
- **Flexible** - The device uses the certified channels to perform passive scanning. If the device receives a beacon from access point on any of the channels, it starts scanning that channel actively.
- **Strict** - The device uses only the channels certified for passive scanning. No output power limits apply. As long as the device has not adapted a country-string, it never transmits and therefore is not able to join other access points.

**Country** - Use the Country pull-down menu to select the country regions for operation. The channels and other relevant information are shown in the list box. The Countries feature is disabled if 11d is enabled. The default country is USA.

A warning message displays when a country selection is made.

The message box displays *"WARNING: Select only the country in which you are using the device. Any other selection will make the operation of this device illegal."*

## A.8 Info Page

The Info (information) page provides non-configurable adapter information. The page displays the product version including the driver version, utility version and firmware version. The hardware information includes board version, chipset and MAC address.



The software details are helpful when updating the product driver and Configuration Utility or contacting the Symbol Customer Support when providing troubleshooting information.





# ***WLAN Adapter Specifications***

## **B.1 LA-5033 PCI Adapter Physical**

The LA-5033 PCI Adapter has the following specifications:

<i>Dimensions (less antenna)</i>	121-mm(L) x122mm(W) x 18.5mm(H)
<i>Weight (with antenna)</i>	203g
<i>Operating temperature</i>	0 to 50 C
<i>Storage temperature</i>	20 to 70 C
<i>Humidity</i>	95% maximum non-condensing
<i>Altitude</i>	2.4k m(8000 feet)/4 hours (Operating)

<i>Shock</i>	20C~+80C/ 30minutes, 100cycles
<i>ESD</i>	meets CE-Mark

## B.2 LA-5030 PC Card Physical

The LA-5030 PC Card has the following specifications:

<i>Dimensions</i>	115-mm(L) x54mm(W) x 7.5mm(H)
<i>Weight (with antenna)</i>	41g
<i>Operating temperature</i>	0° to 50°C
<i>Storage temperature</i>	20° to 70°C
<i>Humidity</i>	95% maximum non-condensing
<i>Altitude</i>	2.4k m(8000 feet)/4 hours (Operating)
<i>Shock</i>	50G, 11 msec ½ sine, 3 shocks per side
<i>Vibration</i>	10-70Hz/0.06", 70-2000Hz/15g, 20 minutes per cycle, 12 cycles per axis
<i>PCMCIA</i>	Type II
<i>ESD</i>	meets CE-Mark

## B.3 Radio

<i>Frequency Range</i>	Country dependent. Typically 2412 MHz to 2484 MHz, 5.15 to 5.825 GHz
<i>Radio Data Rate</i>	11Mbps 5.5 Mbps 2 Mbps 1 Mbps 54 Mbps 48 Mbps 36 Mbps 24 Mbps 18 Mbps 12 Mbps 9 Mbps 6 Mbps
<i>Power Input</i>	LA-5030 PC Card - 3.3V LA-5033 PCI Adapter - 5V

*Range*

Open environment 1000 ft (at 54Mbps).  
Typical office or retail environment 30 ft (at 54Mbps).

*Specifications.*

**US:** Part 47CFR 15.247, 15.205, 15.20715.209, 15.203  
Part 15.407, Subpart E Unlicensed Infrastructure (UNII) Devices  
National Information.

**Canada:** RSS-210

**Europe:** EN 300 328-2 & EN 301 893

**Japan:** ARIB STD-33, 66 & T71



## ***Customer Support***

Symbol Technologies provides its customers with prompt and accurate customer support. Use the Symbol Support Center as the primary contact for any technical problem, question or support issue involving Symbol products.

If the Symbol Customer Support specialists cannot solve a problem, access to all technical disciplines within Symbol becomes available for further assistance and support. Symbol Customer Support responds to calls by email, telephone or fax within the time limits set forth in individual contractual agreements.

When contacting Symbol Customer Support, please provide the following information:

- serial number of unit
- model number or product name
- software type and version number.

## ***North American Contacts***

Inside North America, contact Symbol by:

Symbol Technologies, Inc.

One Symbol Plaza Holtsville, New York 11742-1300

Telephone: 1-631-738-2400/1-800-SCAN 234

Fax: 1-631-738-5990

Symbol Support Center (for warranty and service information):

telephone: 1-800-653-5350

fax: (631) 563-5410

Email: [support@symbol.com](mailto:support@symbol.com)

## ***International Contacts***

Outside North America, contact Symbol by:

Symbol Technologies

Symbol Place

Winnersh Triangle, Berkshire, RG41 5TP

United Kingdom

0800-328-2424 (Inside UK)

+44 118 945 7529 (Outside UK)

## ***Web Support Sites***

### **MySymbolCare**

<http://www.symbol.com/services/msc>

### **Symbol Services Homepage**

<http://symbol.com/services>

### **Symbol Software Updates**

<http://symbol.com/services/downloads>

### **Symbol Developer Program**

<http://software.symbol.com/devzone>

## ***Additional Information***

Obtain additional information by contacting Symbol at:

1-800-722-6234, inside North America

+1-631-738-5200, in/outside North America

<http://www.symbol.com/>





## ***Troubleshooting***

### **D.1 LA-5033 PCI Adapter Troubleshooting Tips**

Use the tools provided by Windows 2000 and XP to diagnose problems.

#### ***D.1.1 The MU cannot associate to the access point***

- If there is no network available using the default ESSID of 101 the task tray icon displays as unassociated. Use the Configuration Utility **Find WLANs** page to detect the networks available to the adapter for association.
- Verify the adapter ESSID matches the ESSID of the AP.
- Verify the security settings set for the access point match those configured for the MU.

### ***D.1.2 Degraded performance from the LA-5033 WLAN PCI adapter***

- Verify a secure antenna connection on the LA-5033 adapter.

### ***D.1.3 Nonfunctioning Adapter LEDs***

- Verify the Card Type parameter is set correctly.
- Verify the adapter ESSID matches the ESSID of the AP.

## **D.2 LA-5030 PC Card Troubleshooting Tips**

Use the tools provided by Windows 2000 and XP to diagnose problems.

### ***D.2.1 The MU cannot associate to the access point***

- If there is no network available using the default ESSID of 101 the task tray icon displays as unassociated. Use the Configuration Utility **Find WLANs** page to detect the networks available to the adapter for association.
- Verify the adapter ESSID matches the ESSID of the AP.
- Verify the security settings set for the access point match those configured for the MU.

### ***D.2.2 Degraded performance from the LA-5033 PCI adapter***

- Verify the a secure antenna connection on the LA-5033 adapter.

### ***D.2.3 Nonfunctioning adapter LEDs***

- Verify the Card Type parameter is set correctly.
- Verify the adapter ESSID matches the ESSID of the AP.



***Symbol Technologies, Inc.***

*One Symbol Plaza*

*Holtsville, New York 11742-1300*

*<http://www.symbol.com>*

