

## Ralink Wireless Utility ( RaUI ) or Windows Zero Configuration ( WZC )

In windows XP, it provides wireless configuration utility named "Windows Zero configuration" which provides basic configuration function for Ralink Wireless NIC. Ralink's utility ( RaUI ) provides WPA supplicant functionality. To make it easier for user to select the correct utility. RaUI will let user make the selection when it first runs after windows XP boots.

Click Figure 1-1 the icon will bring up the selection window and let user make the selection.



Figure 1-1 RaUI.exe

RaUI can co-exist with [WZC](#). When coexisting with [WZC](#), RaUI only provides monitoring function, such as link status, network status, statistic counters, advance feature status, WMM status and WPS status. It won't interfere with WZC's configuration or profile functions. It is shown as Figure 1-2.



Figure 1-2 Select WZC or RaUI

If "Use RaConfig as Configuration utility" is selected, please jump to [Section 2](#) on running RaUI.

If "Use Zero Configuration as Configuration utility" is selected, please continue on the section. We will explain the difference between RaUI and [WZC](#). Figure 1-3 shows the RaUI status when [WZC](#) is active as main control utility.



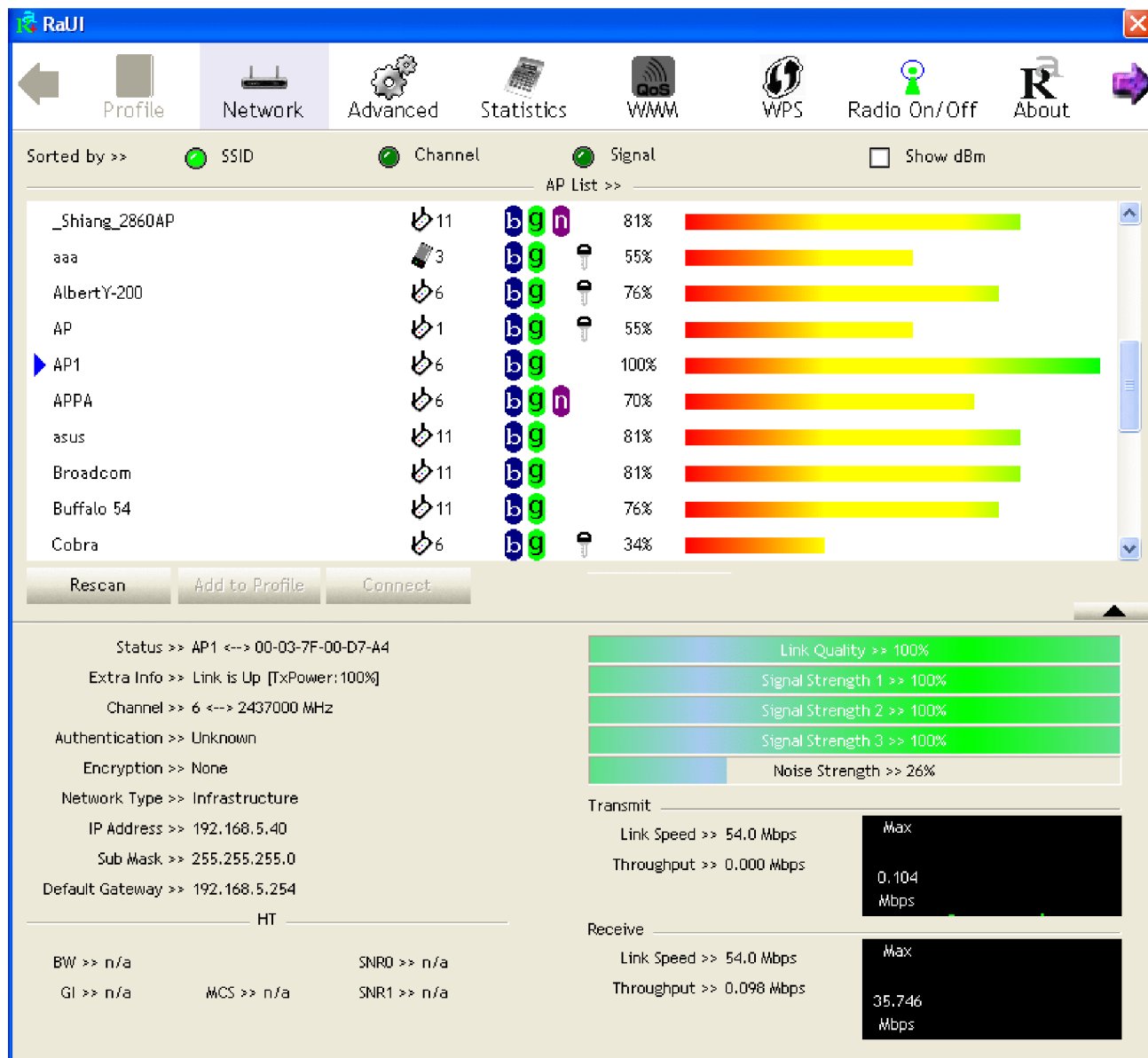


Figure 1-3 RaUI status with WZC active

When activating **WZC**, there are couple difference on RaUI status compared to that without **WZC** running.

- ❶ Profile button will be gray, profile function is removed since the NIC is controlled by **WZC**.
- ❷ The connect and add profile function will be gray. The reason is same as the first difference.

For all other functions provided by RaUI, please read through this document for full detail.

**Use WZC to configure wireless NIC**

- ❶ If connection is lost or not connected, the status prompt as Figure 1-4 will pop up.



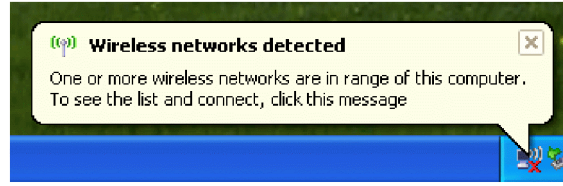


Figure 1-4 status prompt of no connection

- 2 Right-click the network connection icon in task bar.

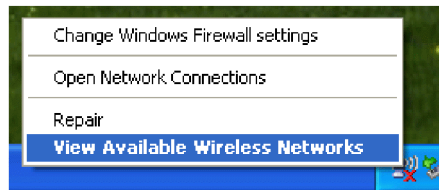


Figure 1-5 Select WZC main status

- 3 Select "View Available Wireless Networks" will pop up the dialog shown as Figure 1-6.

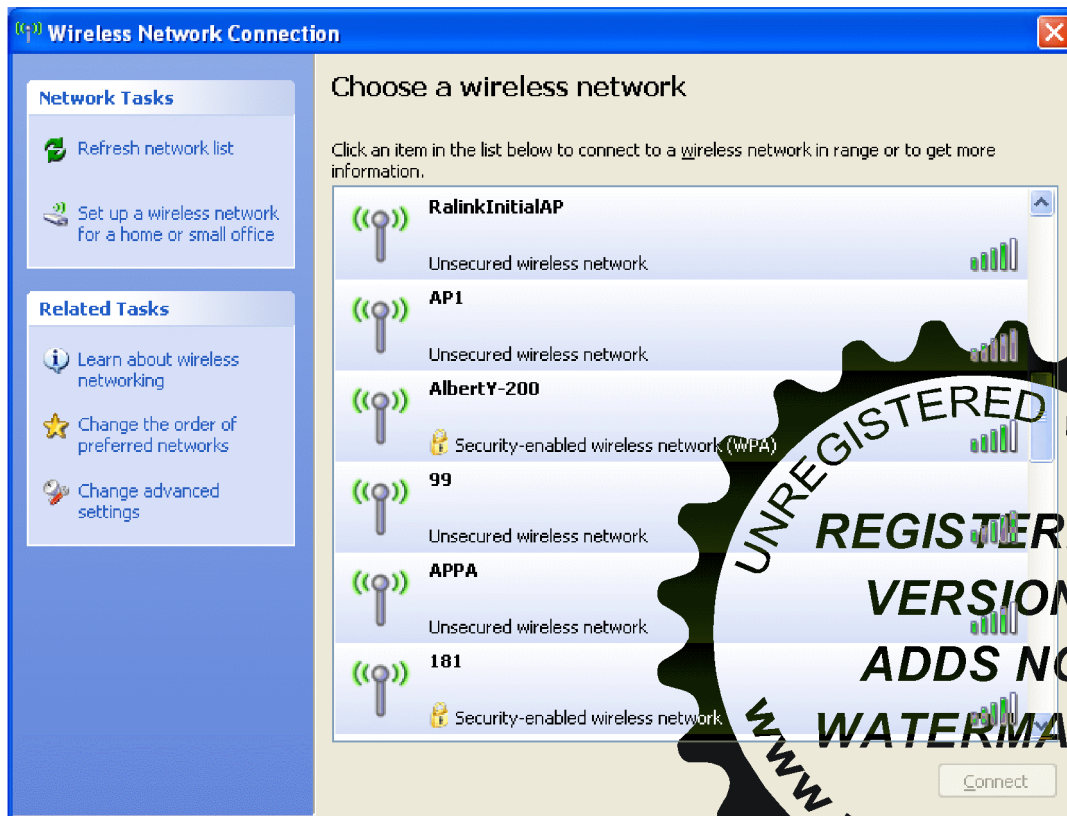


Figure 1-6 Wireless Network Connection

- 4 Select intended AP and click "Connect" shown as Figure 1-7. Then click "Connect Anyway" shown as Figure 1-8.

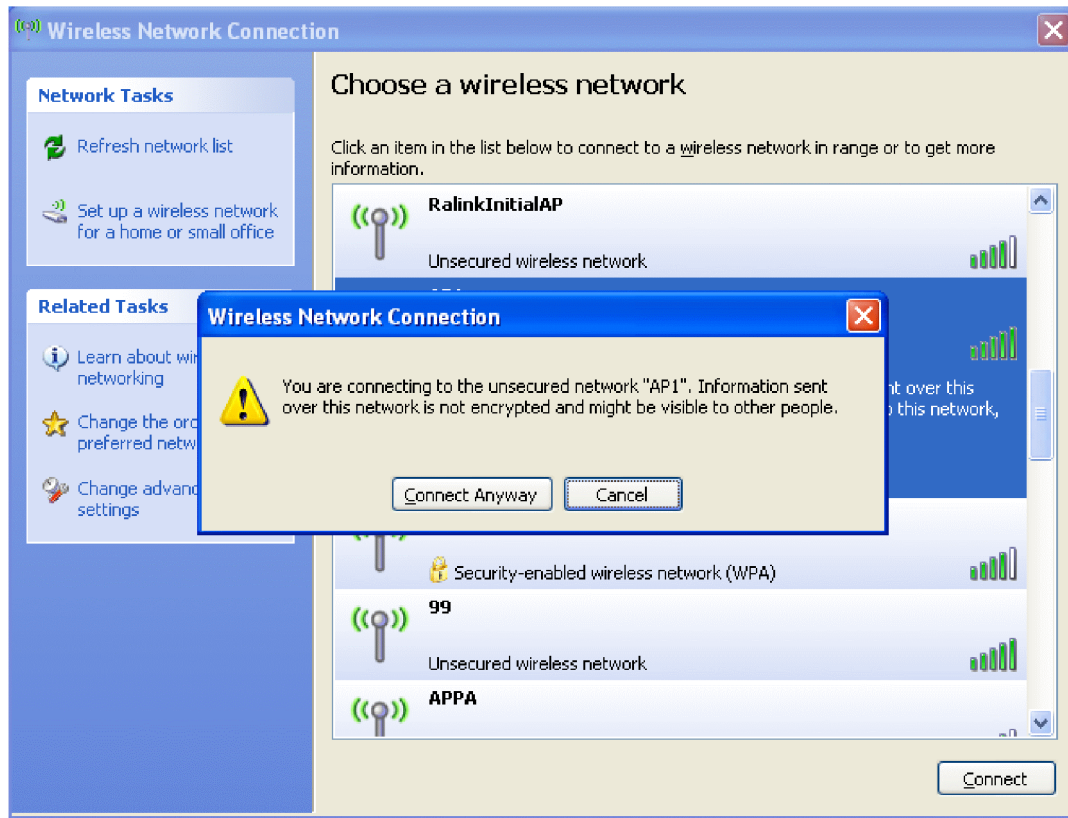


Figure 1-7 Select intended AP : AP1, then click "Connect"



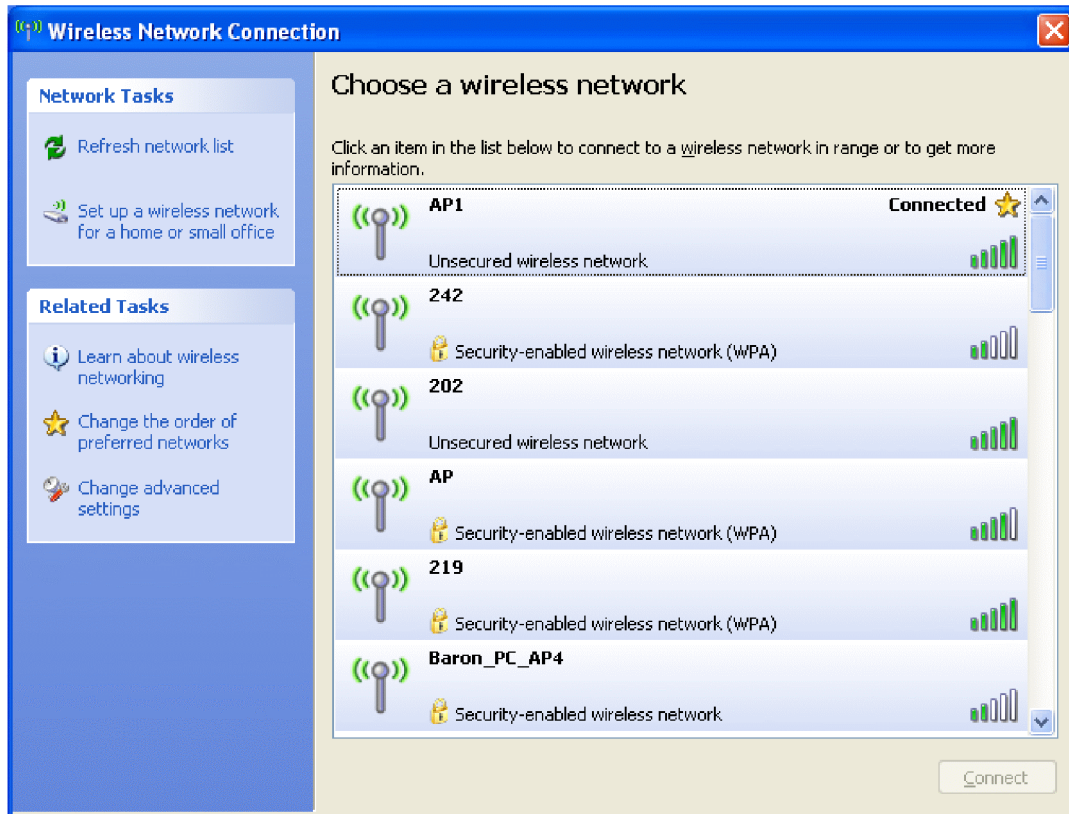


Figure 1-8 Connect AP : AP1 successfully

5 If you want to modify information about AP, click "Change advanced settings" shown as Figure 1-9. Then choose "Wireless Networks" label shown as Figure 1-10.



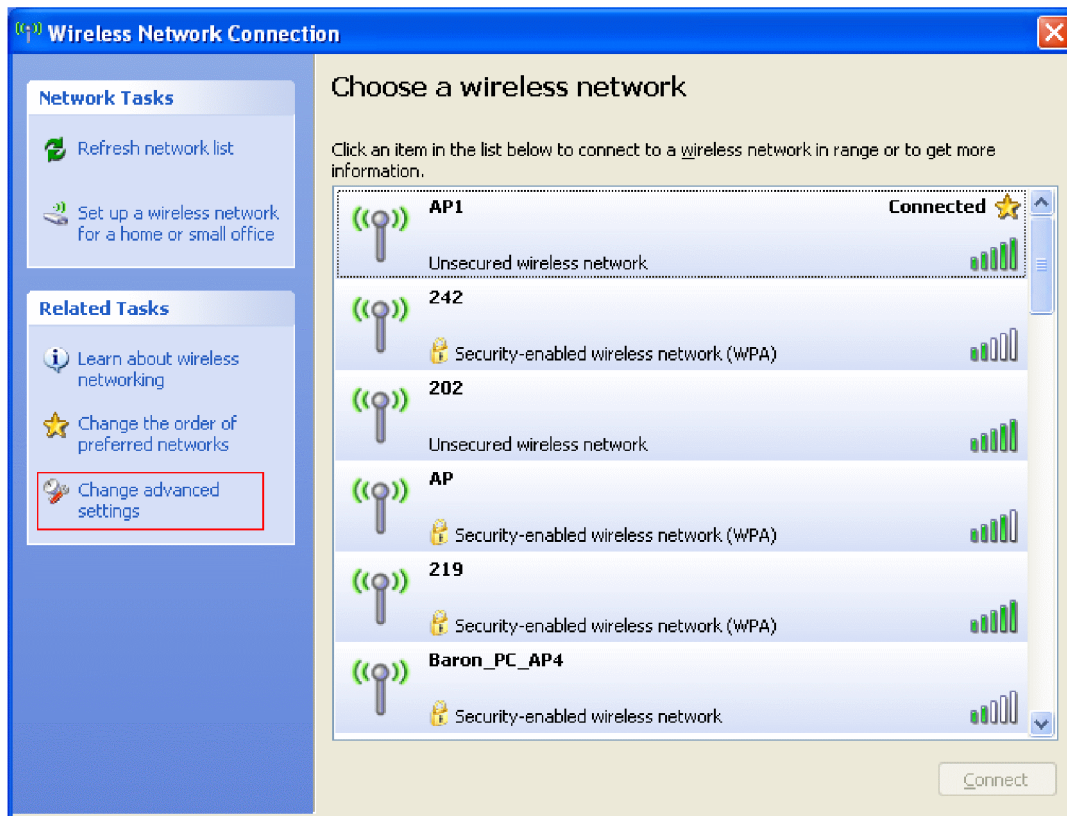


Figure 1-9 Click "Change advanced settings"

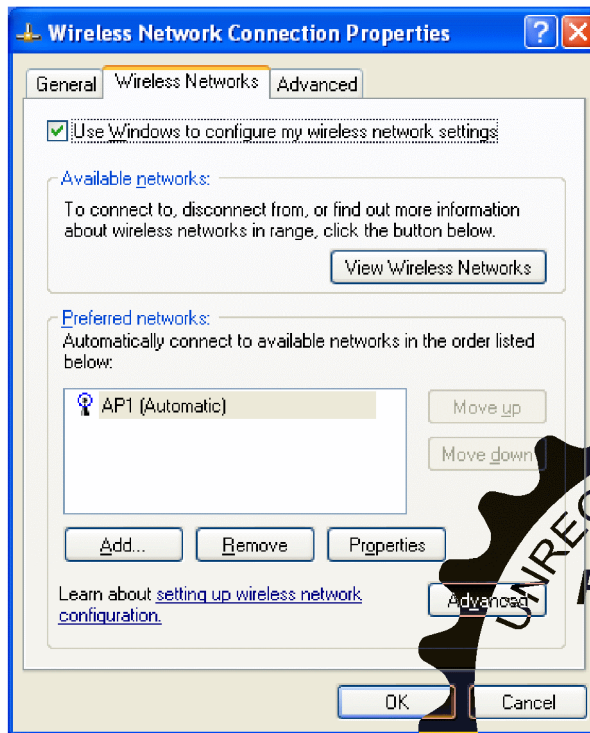


Figure 1-10 Choose "Wireless Networks" label

- 6 Click "Properties" shown as Figure 1-11. Then click "OK" button.

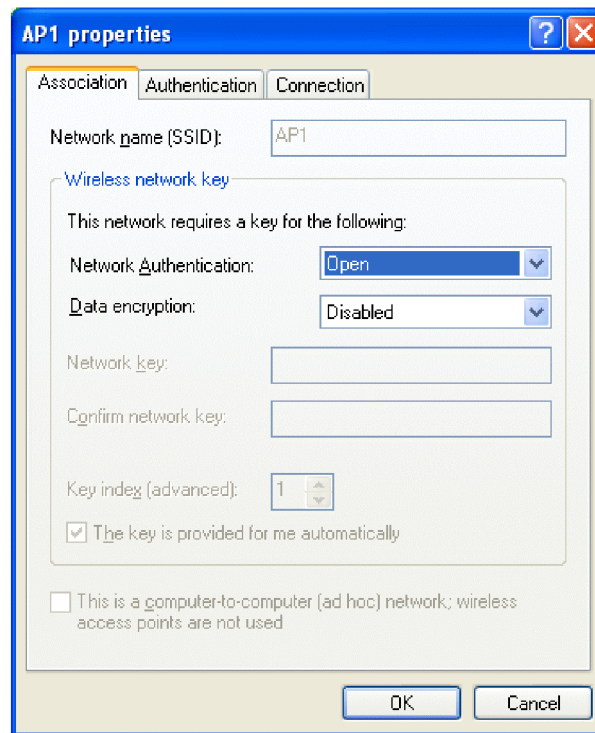


Figure 1-11 AP's properties

- 7 After filling appropriate value, click "OK" button. And the status will prompt up as Figure 1-12.

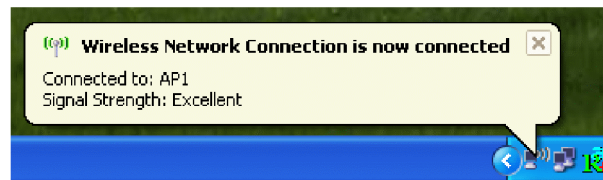


Figure 1-12 Network connection status

- 8 Click the Ralink's icon will bring up RaUI main window. User can find the surrounding APs in the list. The current connected AP will also shown with the green icon indicated as Figure 1-13. User may use the advanced tab to configure more advanced features provided by Ralink's wireless NIC. For the detail on configure the advanced features, please check the Advance setting section for detail.



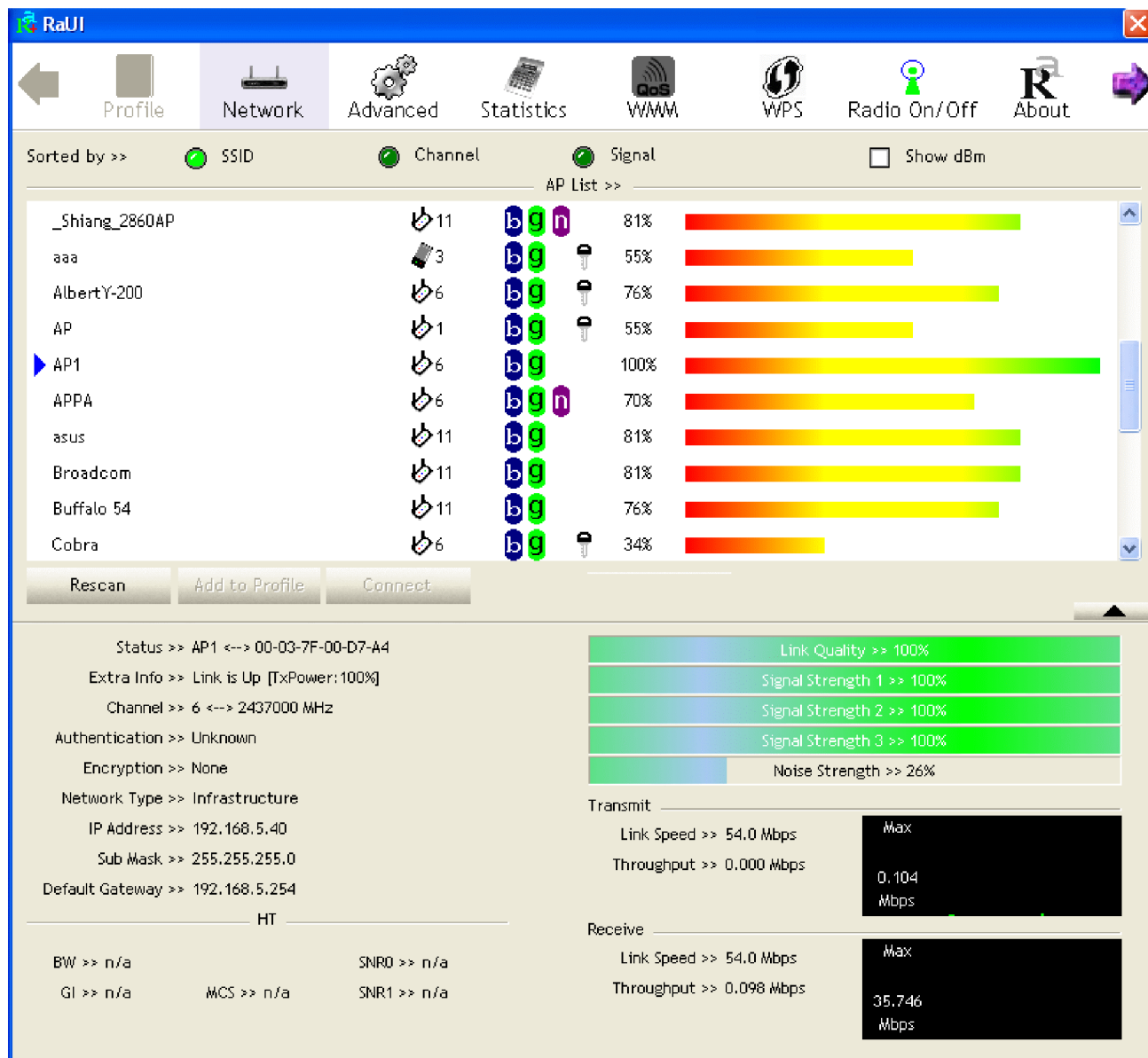


Figure 1-13 Show connection status by using WZC to do connection

