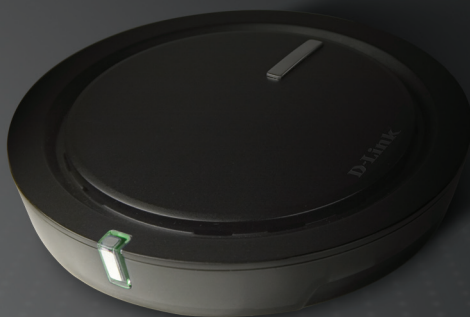


# *QUICK INSTALL GUIDE*

*DWA-142*

VERSION 1.0



**D-Link®**

**WIRELESS**

---

# System Requirements

- A computer or laptop with an available USB 2.0 port
- Windows® 2000 (SP4) or XP (SP2)
- 300MHz processor and at least 32MB of RAM
- Properly installed and working USB Controller
- A draft 802.11n or 802.11b/g access point (for Infrastructure mode), or another draft 802.11n wireless adapter (for Ad-Hoc networking mode).

## Package Contents



D-Link DWA-142  
Wireless USB Adapter



Manual, Software, and  
Warranty on CD

***If any of the above items are missing, please contact your reseller.***

**NOTE:** This product is based on IEEE draft 802.11n specifications and is not guaranteed to be forward compatible with future versions of IEEE 802.11n specifications. Compatibility with draft 802.11n devices from other manufacturers is not guaranteed.

---

# Adapter Installation

**Warning:** Do NOT install the DWA-142 USB Adapter into your computer before installing the driver software from the D-Link CD.

Turn on the computer and Insert the D-Link DWA-142 Driver CD in the CD-ROM drive. The step-by-step instructions that follow are shown in Windows XP. The steps and screens are similar for the other Windows operating systems.

If the CD Autorun function does not automatically start on your computer, go to **Start > Run**. In the run box type **"D:\DWA142.exe"** (where D: represents the drive letter of your CD-ROM drive).

When the autorun screen appears, click **Install Drivers**.



The **InstallShield Wizard** window will appear.

Click **Next**



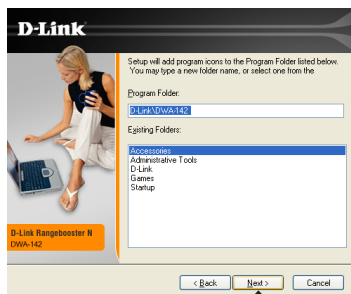
By default setup will install to the default location: *C:\Program Files\D-Link\DWA-142*, where C: represents the drive letter of your hard drive. To install to a different location click **Browse** and specify the location.

Click **Next**



Select the Program Files folder location.

Click **Next**



Insert the adapter into an available USB port on your computer.

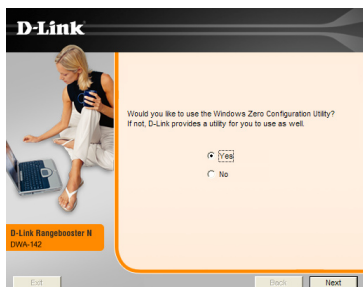
If the *Found New Hardware Wizard* appears, click **Cancel**.



Click **Next**

The D-Link Configuration Wizard will now appear.

If you are using Windows® XP (SP2), you will have the option to use either the D-Link utility or the built-in Windows® Wireless utility.



Click **Next**

Enter the network name (SSID) manually. If you enter the SSID incorrectly, you will automatically be brought to the site survey page. Click **Scan** to display the site survey page.



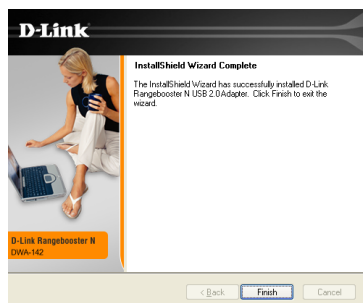
Click **Next**

Click on the network name (SSID) and click **Next**.



Click **Next**

Click **Finish** to continue. If you are prompted to reboot your computer, select **Yes, I want to restart my computer now**.



Click **Finish**

---

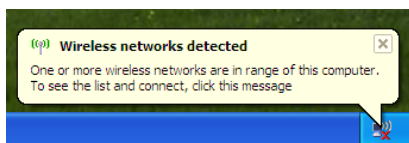
# Connect to a Wireless Network

## Windows® XP Configuration Utility

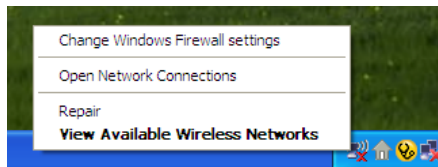
Windows® XP users may use the built-in wireless utility. The following instructions are for Service Pack 2 users.

If you are using Windows® 2000, you must use the D-Link utility. (Please refer to page 9).

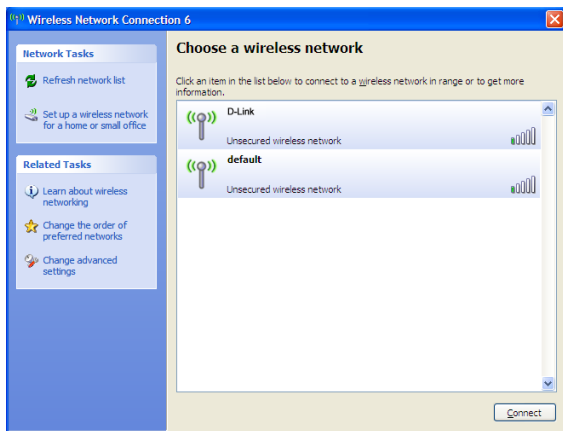
If you receive the **Wireless Networks Detected** bubble, click on the center of the bubble to access the utility.



You may also right-click on the wireless computer icon in your system tray (lower-right corner next to the time). Select **View Available Wireless Networks**.



The Wireless Connection Manager will display any available wireless networks in your area. Click on a network and click the **Connect** button.



Refer to the **Wireless Security** section in the manual for information on connecting to a secure network.



---

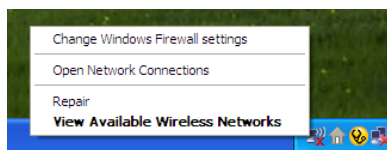
# Connect to a Wireless Network

## Wireless Connection Manager

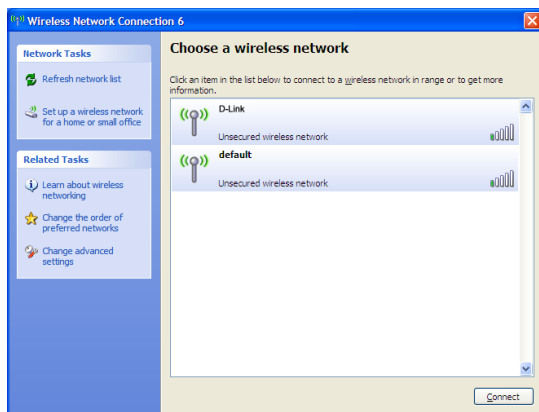
The DWA-142 uses the D-Link Wireless Connection Manager as the management software. The manager provides the user an easy interface to change any settings related to the wireless adapter. Clicking on the D-Link icon on your desktop will start the Configuration.

To disable the Windows® XP wireless utility, and use the D-Link Wireless Connection Manager, follow the steps below:

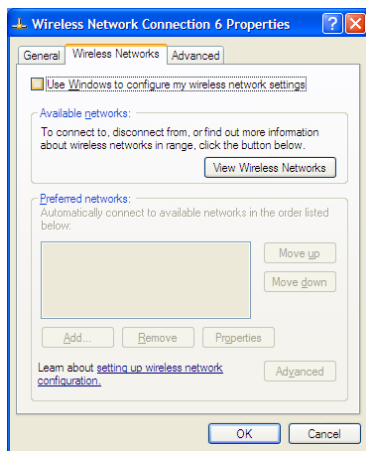
Right-click on the wireless computer icon in your system tray (lower-right corner next to the time). Select **View Available Wireless Networks**.



In the **Choose a Wireless Network** window click **Change Advanced Settings** on the left side below *Related Tasks*.

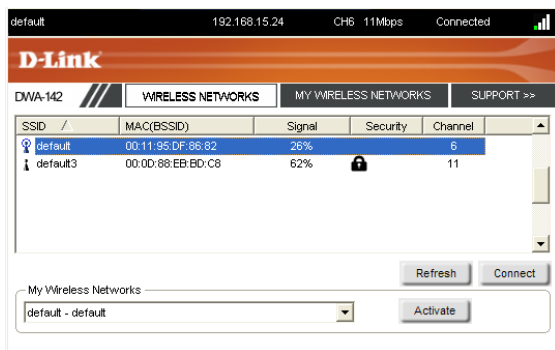


In the *Wireless Network Connection Properties* window, uncheck **Use Windows® to configure my wireless network settings** and then click **OK**.



Double-click the **Wireless Connection Manager** icon on your desktop to start the Configuration.

This window will allow you to see available wireless networks in your area. Simply click the network (SSID) you want to connect to and click the **Connect** button.

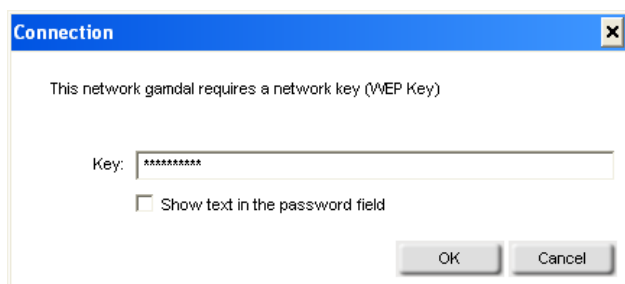


---

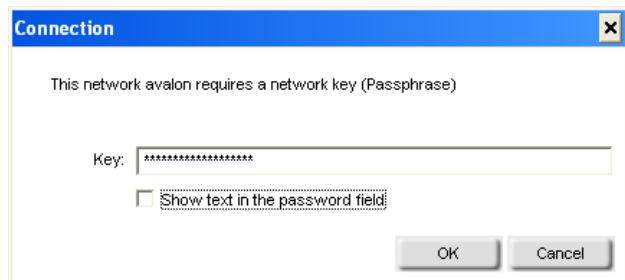
If you are attempting to connect to a secure network, you must supply the encryption key that is on the router or access point you are trying to connect to.

Please refer to the manual on the CD for more information on Wireless Security.

If the network you are connecting to is using WEP, enter the WEP key for the network and click **OK**.



If the network you are connecting to is using WPA-PSK, enter the passphrase for the network and click **OK**.



---

# Technical Support

D-Link's website contains the latest user documentation and software updates for D-Link products.

U.S. and Canadian customers can contact D-Link Technical Support through our website or by phone.

## United States

### Telephone

(877) 453-5465

Twenty four hours a day, seven days a week.

### World Wide Web

<http://support.dlink.com>

## Canada

### Telephone

(800) 361-5265

Monday through Friday, 7:30am to 9:00pm EST.

### World Wide Web

<http://support.dlink.ca>



Version 1.0

August 8, 2006

Copyright ©2006 D-Link Corporation/D-Link Systems, Inc. All rights reserved. D-Link and the D-Link logo are registered trademarks of D-Link Corporation or its subsidiaries in the United States and other countries. Other trademarks are the property of their respective owners. Maximum wireless signal rate derived from IEEE Standard 802.11g and draft 802.11n specifications. Actual data throughput will vary. Network conditions and environmental factors, including volume of network traffic, building materials and construction, and network overhead, lower actual data throughput rate. Environmental factors will adversely affect wireless signal range. Product specifications, size and shape are subject to change without notice, and actual product appearance may differ from that depicted on the packaging. Visit [www.dlink.com](http://www.dlink.com) for more details.