



User Manual

Wireless N 150 High-Gain USB Adapter

Table of Contents

Product Overview	3	Wireless Basics	31
Package Contents.....	3	Wireless Modes.....	35
System Requirements.....	3	Networking Basics	36
Introduction	4	Check your IP address.....	36
Features.....	5	Windows® XP Users.....	36
Hardware Overview.....	6	Windows® 7/Windows Vista® Users.....	36
Installation	7	Statically Assign an IP address.....	37
Getting Started.....	7	Windows® XP Users.....	37
Remove Existing Installations	7	Windows® 7/Windows Vista® Users.....	38
Disable Other Wireless Adapters.....	8	Technical Specifications	39
Wireless Installation Considerations.....	10		
Adapter Installation	11		
Wi-Fi Protected Setup (WPS)	13		
Connect to a Wireless Network	16		
Using Windows® 7	16		
Using Windows Vista®	17		
Using Windows® XP	18		
Wireless Security	19		
What is WPA?	19		
Using Windows® 7	20		
Using Windows Vista®	23		
Using the Windows® XP Utility.....	25		
Troubleshooting	27		

Package Contents

- D-Link DWA-127 Wireless N 150 High-Gain USB Adapter
- Manual and Warranty on CD
- D-Link Wireless Connection Manager on CD
- Quick Installation Guide

System Requirements

- A computer or laptop with an available USB 2.0 port
- Windows® 7, Vista®, XP (Service Pack 3)
- CD-ROM Drive
- 300MHz processor and at least 64MB of RAM
- An 802.11n or 802.11g access point or wireless router

Introduction

DWA-127 Wireless N 150 High-Gain USB Adapter is a convenient wireless connectivity solution for desktop or notebook PCs. Instead of stringing Ethernet cables to your PC or dismantling your desktop computer case, the DWA-127 can enable 802.11n wireless connectivity by simply utilizing your desktop or notebook PC's USB port.

Powered by Wireless N 150 technology, the DWA-127 provides a faster wireless connection and superior reception than 802.11g*. The DWA-127 is designed for use in bigger homes and for those that demand higher networking. Maximize wireless performance by connecting this USB Adapter to a Wireless N router and stay connected from virtually anywhere in the home. This USB Adapter supports WPA and WPA2 encryption to prevent outside intrusion and protect your personal information from being exposed.

D-Link's Quick Setup Wizard guides you step-by-step through the installation process. You'll be able to configure this USB Adapter without having to call the teenager from down the street to help you. The D-Link Wireless Manager is included with this product to keep track of all your most frequently accessed networks.

DWA-127 with portable size, powerful reception coverage that is great for travel and a convenient solution for providing high performance wireless connectivity to your desktop or notebook PC. Enjoy the many benefits of wireless connectivity today!

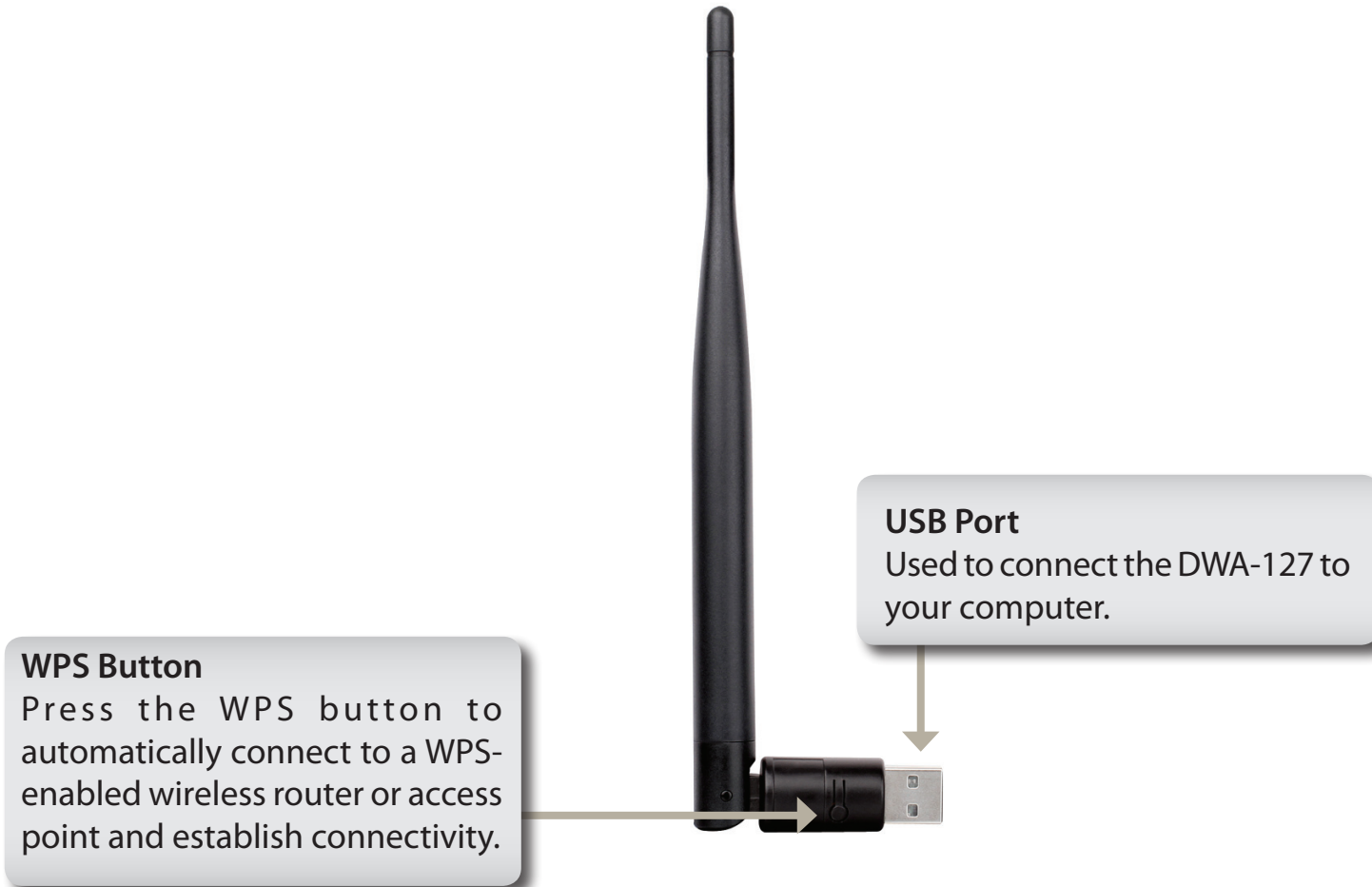
* Maximum wireless signal rate derived from IEEE Standard 802.11g and 802.11n specifications. Actual data throughput will vary. Network conditions and environmental factors, including volume of network traffic, building materials and construction, and network overhead, lower actual data throughput rate. Environmental conditions will adversely affect wireless signal range.

Features

- Rotatable antenna for extended range and higher transfer speed.
- Convenience of Plug & Play installation.
- Fully 802.11g compatible.
- 802.11n compliant.
- Powered by the USB port; no external power source required.
- USB 2.0 standard*.
- You can securely connect to a wireless network using WPA/WPA2 (Wi-Fi Protected Access) providing you a much higher level of security for your data and communication than has previously been available.
- Position the DWA-127 almost anywhere in your workspace to achieve the best reception possible.
- Supports Infrastructure networks via an access point
- Easy configuration using WPS PBC utility

* Using a USB 1.1 port will adversely affect throughput.

Hardware Overview



Installation

This section will walk you through the installation process. If you have a built-in wireless adapter, please disable it in device manager before installing your D-Link adapter. Also, if you have previously installed another wireless adapter, please make sure any software is uninstalled.

Getting Started

Before installing your new D-Link wireless adapter, please verify the following:

- Remove any previous installations of wireless adapters
- Disable any built-in wireless adapters
- Verify the settings such as the SSID and security settings of the network(s) you want to connect to

Remove Existing Installations

If you've installed a different manufacturer's adapter or a different model D-Link adapter, make sure the software is uninstalled before installing the new software. Some utilities may cause a conflict with the new software. If you plan to use multiple adapters at different times, make sure the utilities are not set to load when your computer boots up. Windows® XP users may use the built-in wireless utility for all adapters.

To remove any old software:

Windows® 7 users: Click **Start** > **Control Panel** > **Programs and Features**.

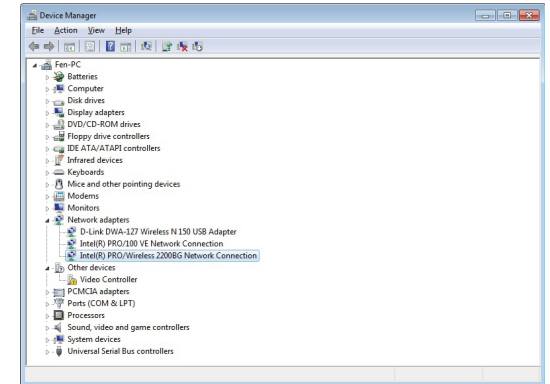
Windows® XP/Vista® users: Click **Start** > **Control Panel** > **Add or Remove Programs**.

Disable Other Wireless Adapters

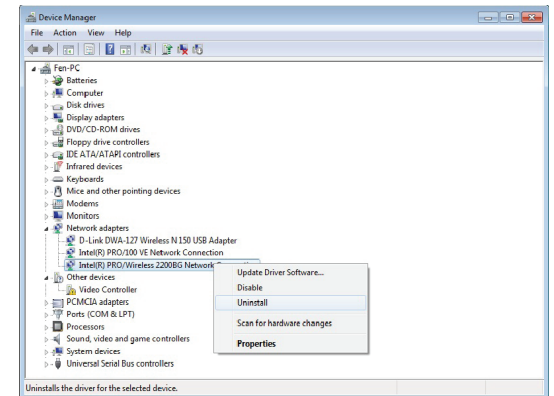
Most newer laptops may include a built-in wireless adapter. To prevent any conflicts with the D-Link wireless adapter, it is recommended to disable the wireless adapter (as well as any unused Ethernet adapters).

From the desktop, right-click on the **My Computer** icon and select **Properties**.

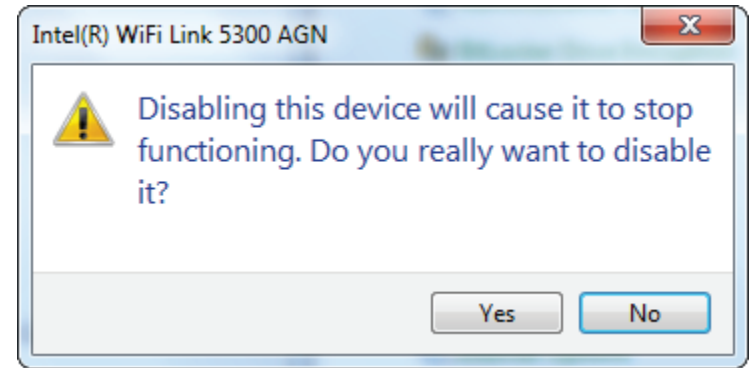
Click the **Hardware** tab and then click **Device Manager**. Scroll down the list and click the **+** sign to the left of **Network Adapters**.



Right-click the adapter you would like to disable and select **Disable**.

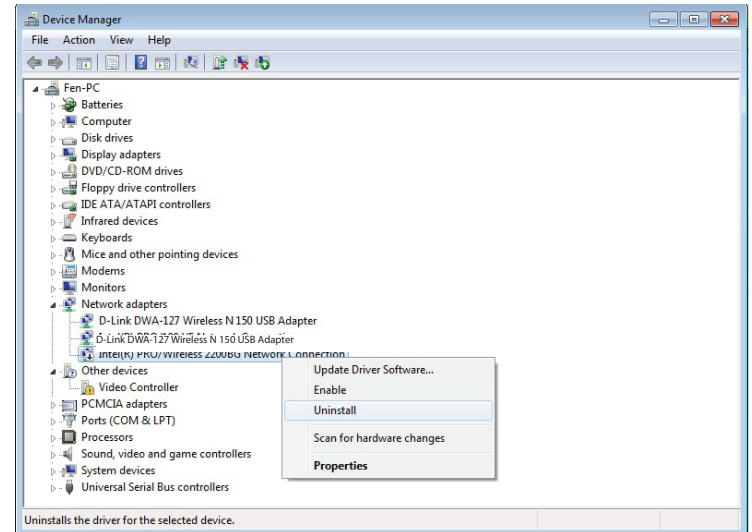


Click **Yes** to disable the adapter.



The adapter is now disabled. When disabled, a red X will be displayed.

Disabling the adapter will not remove the drivers. If you would like to use the adapter, simply right-click it and select **Enable**.



Wireless Installation Considerations

The D-Link wireless adapter lets you access your network using a wireless connection from virtually anywhere within the operating range of your wireless network. Keep in mind that the number, thickness and location of walls, ceilings, or other objects that the wireless signals must pass through, may limit the range. Typical ranges vary depending on the types of materials and background RF (radio frequency) noise in your home or business. The key to maximizing wireless range is to follow these basic guidelines:

1. Keep the number of walls and ceilings between the D-Link adapter and other network devices to a minimum - each wall or ceiling can reduce your adapter's range from 3-90 feet (1-30 meters.) Position your devices so that the number of walls or ceilings is minimized.
2. Be aware of the direct line between network devices. A wall that is 1.5 feet thick (.5 meters), at a 45-degree angle appears to be almost 3 feet (1 meter) thick. At a 2-degree angle it looks over 42 feet (14 meters) thick! Position devices so that the signal will travel straight through a wall or ceiling (instead of at an angle) for better reception.
3. Building Materials make a difference. A solid metal door or aluminum studs may have a negative effect on range. Try to position access points, wireless routers, and computers so that the signal passes through drywall or open doorways. Materials and objects such as glass, steel, metal, walls with insulation, water (fish tanks), mirrors, file cabinets, brick, and concrete will degrade your wireless signal.
4. Keep your product away (at least 3-6 feet or 1-2 meters) from electrical devices or appliances that generate RF noise.
5. If you are using 2.4GHz cordless phones or X-10 (wireless products such as ceiling fans, lights, and home security systems), your wireless connection may degrade dramatically or drop completely. Make sure your 2.4GHz phone base is as far away from your wireless devices as possible. The base transmits a signal even if the phone is not in use.

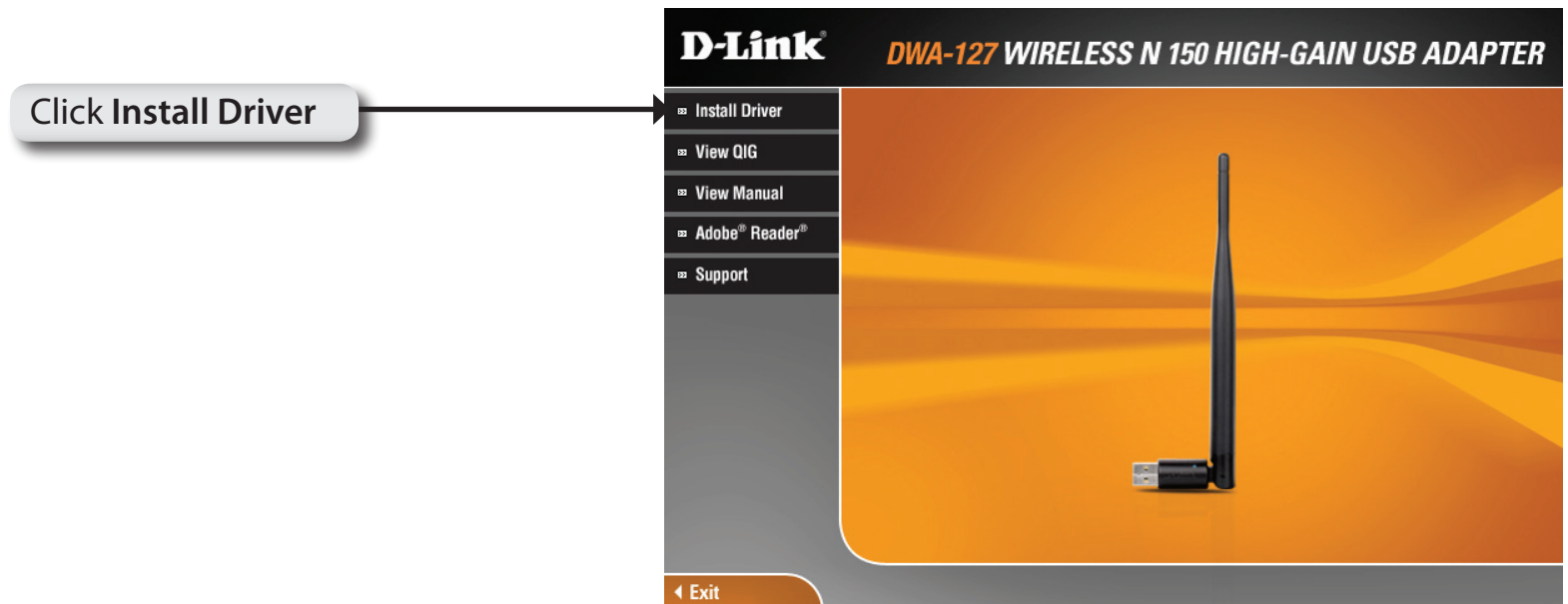
Adapter Installation

Warning: Do NOT install the DWA-127 USB Adapter into your computer before installing the driver software from the D-Link CD.

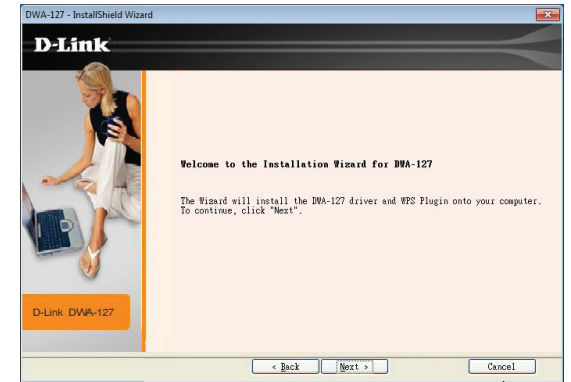
Turn on the computer and Insert the D-Link DWA-127 Driver CD in the CD-ROM drive.

If the CD Autorun function does not automatically start on your computer, go to **Start > Run**. In the run box type "**D:\autorun.exe**" (where **D:** represents the drive letter of your CD-ROM drive).

When the autorun screen appears, click **Install Driver**.

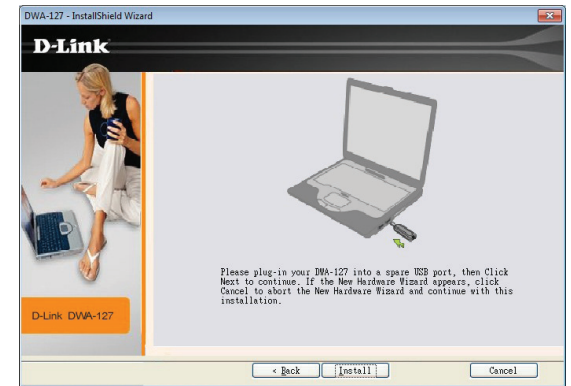


The *InstallShield Wizard* window will appear.



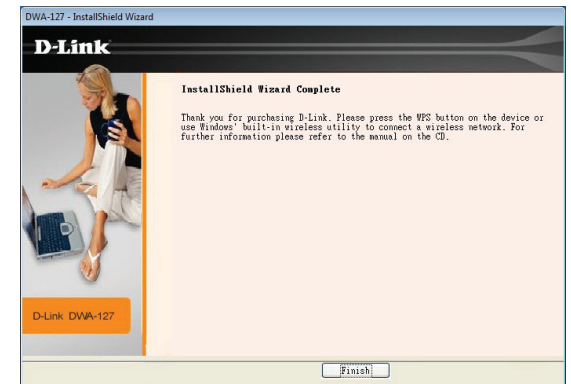
Click **Next**

Insert the adapter into an available USB port on your computer.



Click **Next**

Click **Finish** to complete your setup.



Click **Finish**

Wi-Fi Protected Setup (WPS)

Wi-Fi Protected Setup (WPS) System is designed for easy setup of security-enabled Wi-Fi networks. It is recommended to have the access point or wireless router nearby during setup.

For more information on WPS, visit the Wi-Fi Alliance website at www.wi-fi.org.

“Push Button Configuration” (PBC) is a external button on the adapter that connects you to other WPS-enabled devices. A connection can be established by clicking the button, then pushing the physical button on the access point or wireless router within 120 seconds. Refer to next page.

Push Button

1. To connect to your network, press the WPS button on the adapter and hold for two seconds until the utility screen appears.



2. Press the WPS button located on your access point or router to continue. This screen will appear once you have successfully established connection with your network.

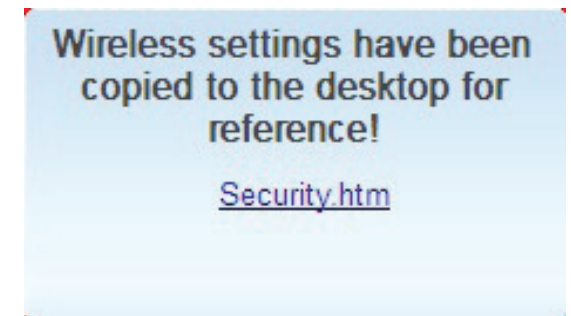
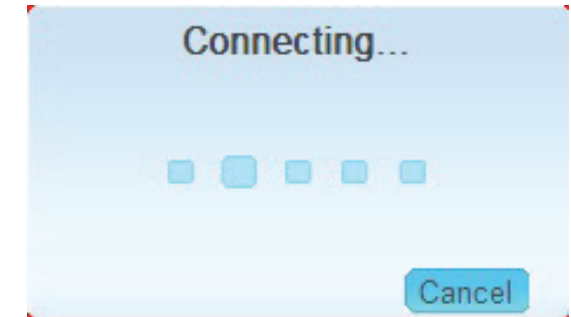
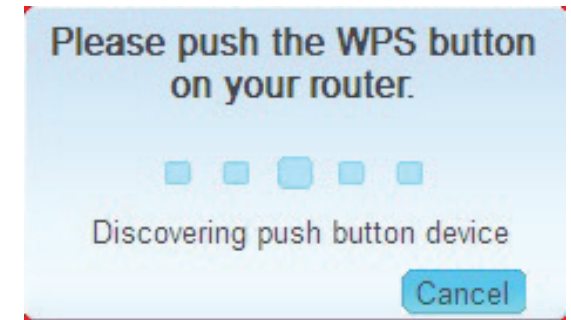


Press the WPS button on the adapter and holding for two seconds until the utility screen comes up. Then, press the WPS button on the router/access point to continue.

The adapter will try to establish connectivity to your access point or wireless router.

When this screen appears, you have successfully established connectivity. Click Finish to complete your setup.

WPS UI will save the wireless connection profile named "security.htm" on the desktop



Connect to a Wireless Network Using Windows® 7

Windows® 7 users may use the built-in wireless utility. If you are using another company's utility, please refer to the user manual of your wireless adapter for help with connecting to a wireless network. Most utilities will have a "site survey" option similar to the Windows® 7 utility as seen below.

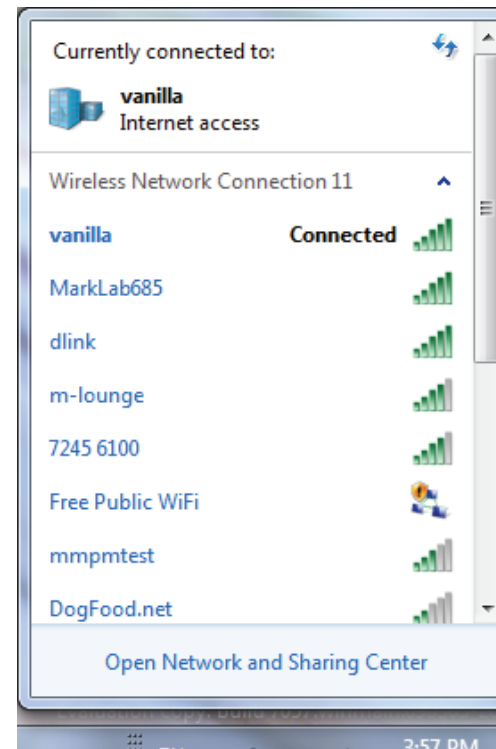
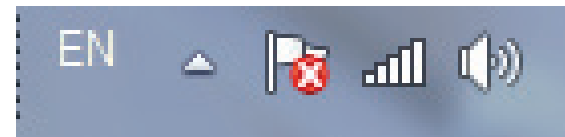
If you receive the **Wireless Networks Detected** bubble, click on the center of the bubble to access the utility.

or

Left-click the wireless icon in your system tray (lower-right corner next to the time).

The utility will display any available wireless networks in your area. Click on a network (displayed using the SSID) and click the **Connect** button.

If you get a good signal but cannot access the Internet, check your TCP/IP settings for your wireless adapter. Refer to the **Networking Basics** section in this manual for more information.



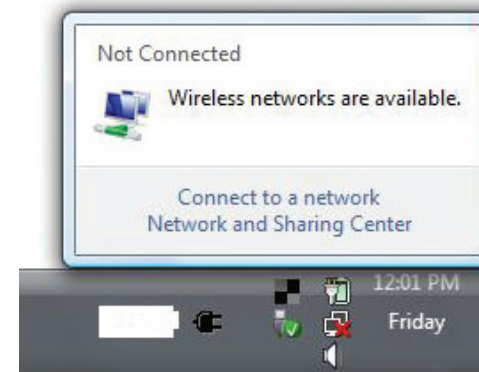
Connect to a Wireless Network Using Windows Vista®

Windows Vista® users may use the built-in wireless utility. If you are using another company's utility, please refer to the user manual of your wireless adapter for help with connecting to a wireless network. Most utilities will have a "site survey" option similar to the Windows Vista® utility as seen below.

If you receive the **Wireless Networks Detected** bubble, click on the center of the bubble to access the utility.

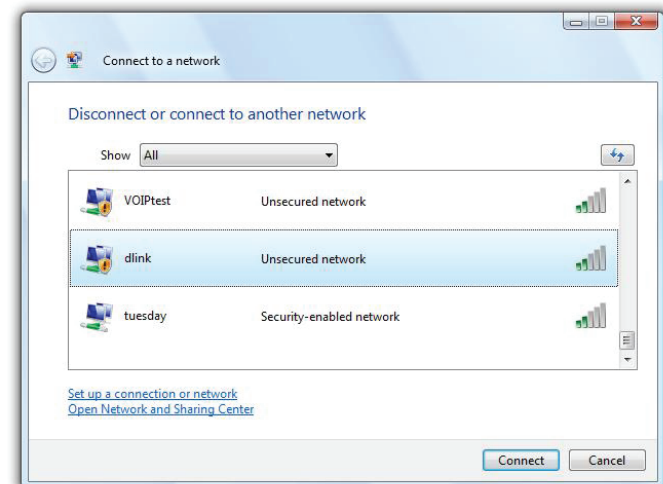
or

Right-click on the wireless computer icon in your system tray (lower-right corner next to the time). Select **Connect to a network**.



The utility will display any available wireless networks in your area. Click on a network (displayed using the SSID) and click the **Connect** button.

If you get a good signal but cannot access the Internet, check you TCP/IP settings for your wireless adapter. Refer to the **Networking Basics** section in this manual for more information.



Connect to a Wireless Network Using Windows® XP

Windows® XP users may use the built-in wireless utility (Zero Configuration Utility). The following instructions are for Service Pack 2 users. If you are using another company's utility, please refer to the user manual of your wireless adapter for help with connecting to a wireless network. Most utilities will have a "site survey" option similar to the Windows® XP utility as seen below.

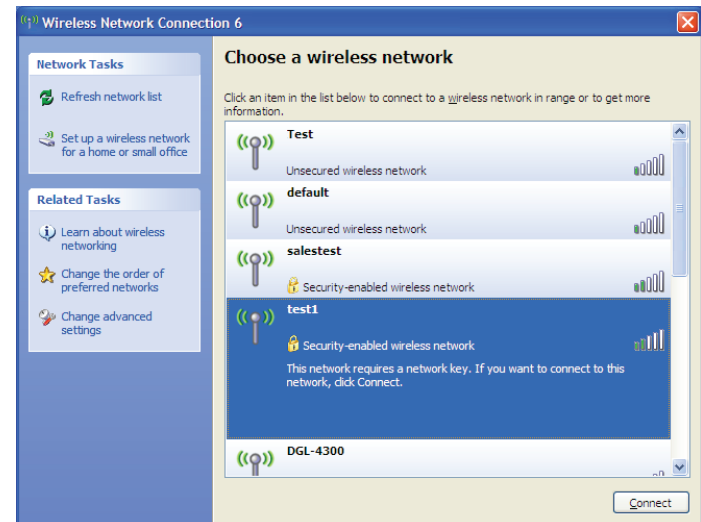
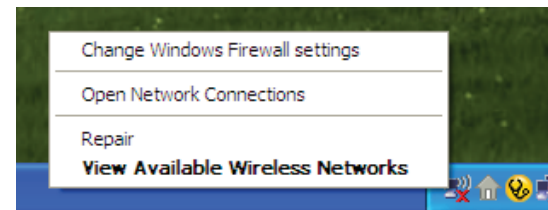
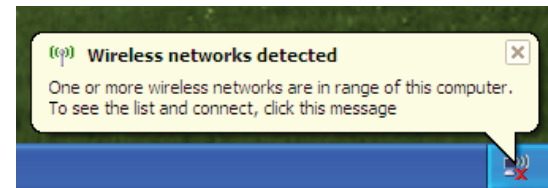
If you receive the **Wireless Networks Detected** bubble, click on the center of the bubble to access the utility.

or

Right-click on the wireless computer icon in your system tray (lower-right corner next to the time). Select **View Available Wireless Networks**.

The utility will display any available wireless networks in your area. Click on a network (displayed using the SSID) and click the **Connect** button.

If you get a good signal but cannot access the Internet, check your TCP/IP settings for your wireless adapter. Refer to the **Networking Basics** section in this manual for more information.



Wireless Security

This section will show you the different levels of security you can use to protect your data from intruders. The DWA-127 offers the following types of security:

- WPA2-PSK (Pre-Shared Key)
- WPA-PSK (Pre-Shared Key)

What is WPA?

WPA, or Wi-Fi Protected Access, is a Wi-Fi standard that was designed to improve the security features of WEP (Wired Equivalent Privacy).

The 2 major improvements over WEP:

- Improved data encryption through the Temporal Key Integrity Protocol (TKIP). TKIP scrambles the keys using a hashing algorithm and, by adding an integrity-checking feature, ensures that the keys haven't been tampered with. WPA2 is based on 802.11i and uses Advanced Encryption Standard instead of TKIP.
- User authentication, which is generally missing in WEP, through the extensible authentication protocol (EAP). WEP regulates access to a wireless network based on a computer's hardware-specific MAC address, which is relatively simple to be sniffed out and stolen. EAP is built on a more secure public-key encryption system to ensure that only authorized network users can access the network.

WPA-PSK/WPA2-PSK uses a passphrase or key to authenticate your wireless connection. The key is an alpha-numeric password between 8 and 63 characters long. The password can include symbols (!?*&_) and spaces. This key must be the exact same key entered on your wireless router or access point.

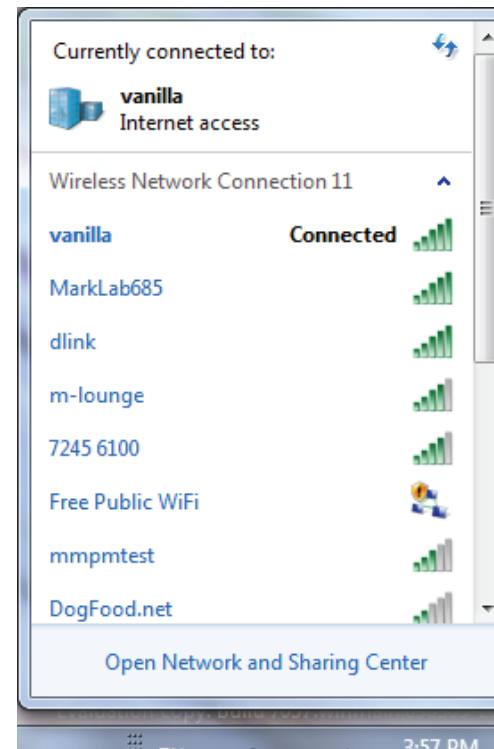
Configure WPA/WPA2 Passphrase Using Windows® 7

It is recommended to enable wireless security (WPA/WPA2) on your wireless router or access point before configuring your wireless adapter. If you are joining an existing network, you will need to know the security key or passphrase being used.

1. Click on the wireless icon in your system tray (lower-right corner).



2. The utility will display any available wireless networks in your area.

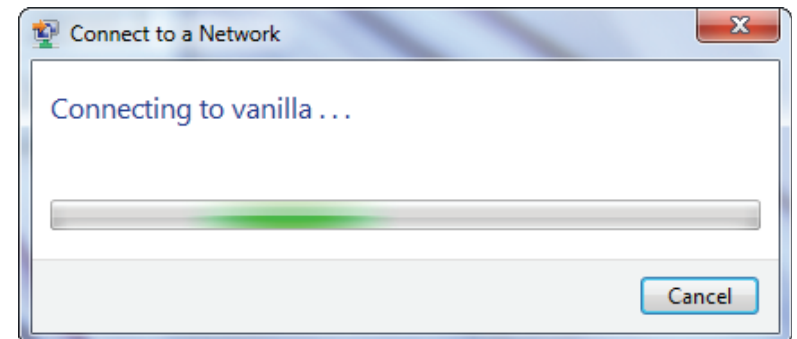


3. Highlight the wireless network (SSID) you would like to connect to and click the **Connect** button.

If you get a good signal but cannot access the Internet, check your TCP/IP settings for your wireless adapter. Refer to the **Networking Basics** section in this manual for more information.

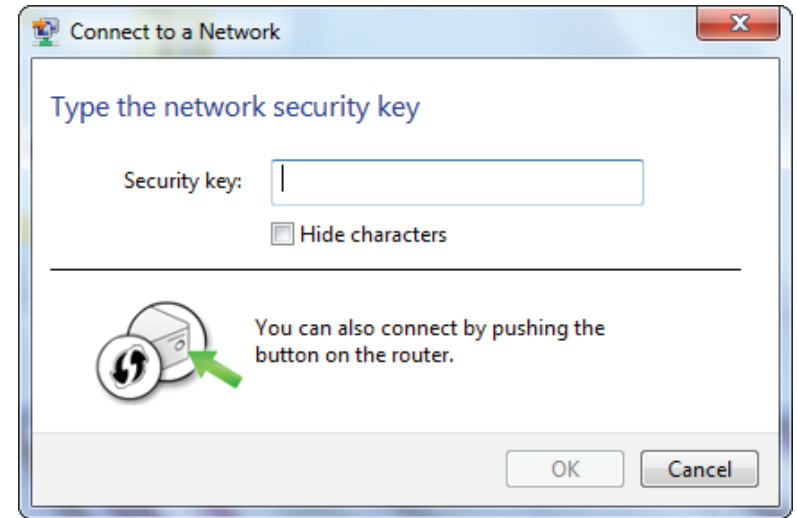


4. The following window appears while your computer tries to connect to the router.



5. Enter the same security key or passphrase that is on your router and click **Connect**. You can also connect by pushing the WPS button on the router.

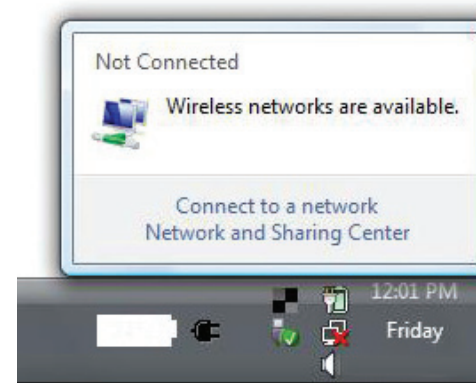
It may take 20-30 seconds to connect to the wireless network. If the connection fails, please verify that the security settings are correct. The key or passphrase must be exactly the same as on the wireless router.



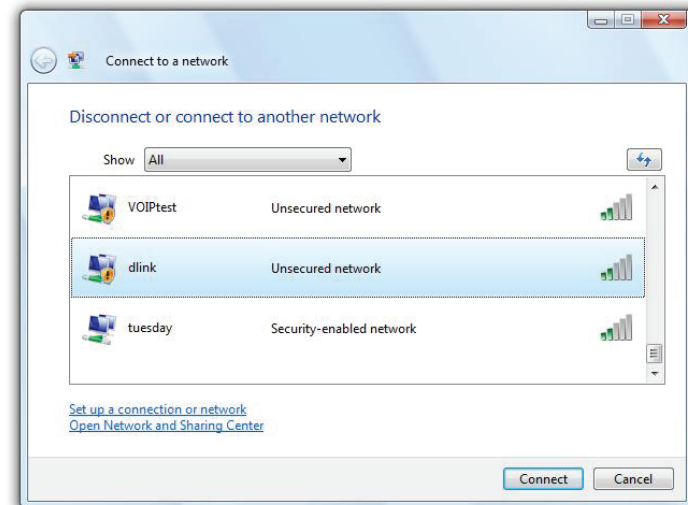
Configure WPA/WPA2 Passphrase Using Windows Vista®

It is recommended to enable wireless security (WPA/WPA2) on your wireless router or access point before configuring your wireless adapter. If you are joining an existing network, you will need to know the security key or passphrase being used.

1. Open the Windows Vista® Wireless Utility by right-clicking on the wireless computer icon in your system tray (lower right corner of screen). Select **Connect to a network**.

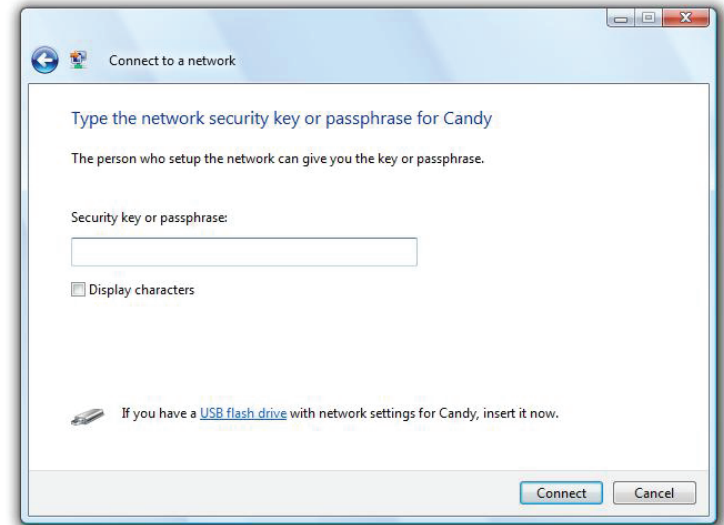


2. Highlight the wireless network (SSID) you would like to connect to and click **Connect**.



3. Enter the same security key or passphrase that is on your router and click **Connect**.

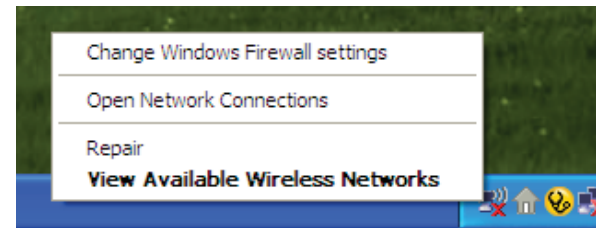
It may take 20-30 seconds to connect to the wireless network. If the connection fails, please verify that the security settings are correct. The key or passphrase must be exactly the same as on the wireless router.



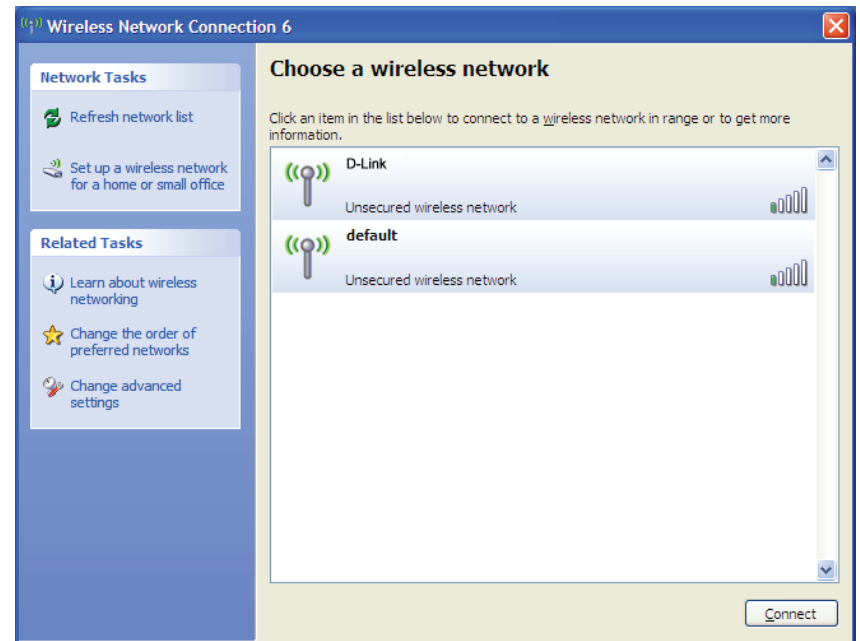
Configure WPA/WPA2 Passphrase Using the Windows® XP Utility

It is recommended to enable WPA-PSK on your wireless router or access point before configuring your wireless adapter. If you are joining an existing network, you will need to know the WPA-PSK key being used.

1. Open the Windows® XP Wireless Utility by right-clicking on the wireless computer icon in your system tray (lower-right corner of screen). Select **View Available Wireless Networks**.

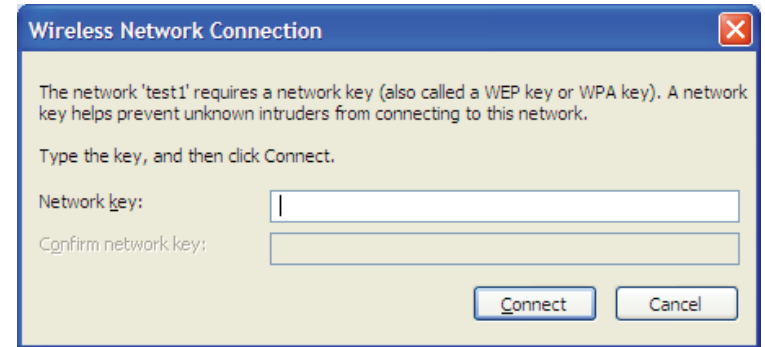


2. Highlight the wireless network (SSID) you would like to connect to and click **Connect**.



3. The **Wireless Network Connection** box will appear. Enter the WPA-PSK passphrase and click **Connect**.

It may take 20-30 seconds to connect to the wireless network. If the connection fails, please verify that the WPA-PSK settings are correct. The WPA-PSK passphrase must be exactly the same as on the wireless router or access point.

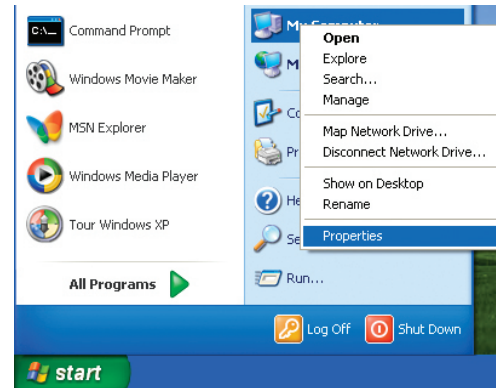


Troubleshooting

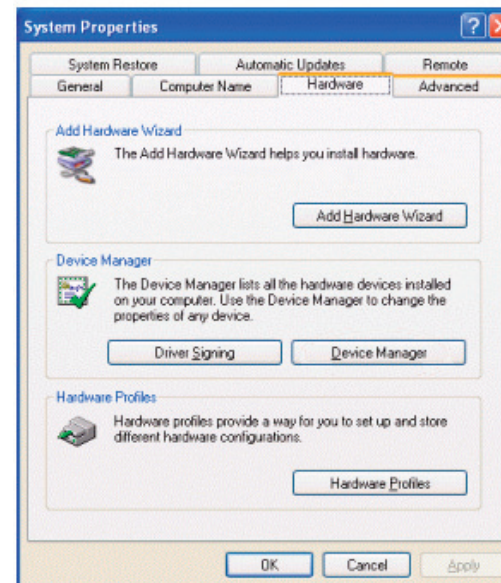
This chapter provides solutions to problems that can occur during the installation and operation of the DWA-127. Read the following descriptions if you are having problems. (The examples below are illustrated in Windows® XP. If you have a different operating system, the screenshots on your computer will look similar to the following examples.)

1. How do I know if my adapter is installed properly?

Go to **Start > My Computer > Properties**.



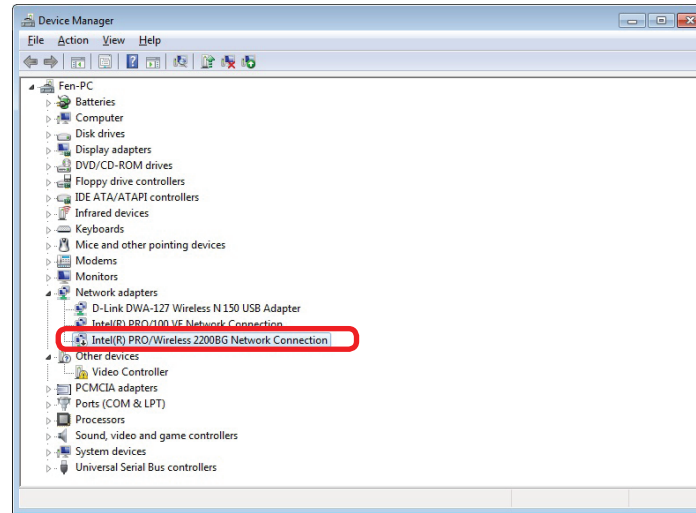
Select the **Hardware Tab**.



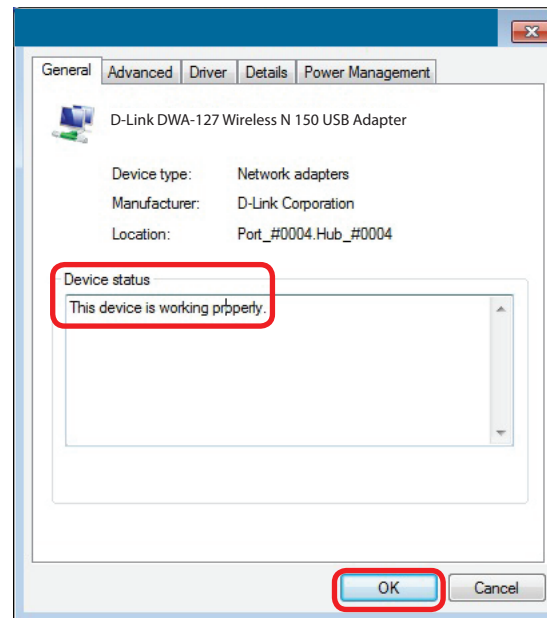
Click the + sign next to **Network Adapters**.

Right-click on **D-Link Wireless N 150 High-Gain USB Adapter**.

Select **Properties** to check that the drivers are installed properly.



Look under **Device Status** to check that the device is working properly. Click **OK** to continue.



2. The computer does not recognize the DWA-127 Wireless Adapter.

Make sure that the DWA-127 Wireless Adapter is properly seated in the computer's USB port.

If Windows does not detect the hardware upon insertion of the adapter, make sure to completely remove drivers that were previously loaded.

3. The computer with the DWA-127 installed is unable to connect to the wireless network and/or the Internet.

- Check that the LED indicators for the broadband modem are indicating normal activity. If not, there may be a problem with the broadband connection.
- Check that the LED indicators on the wireless router are functioning properly. If not, check that the AC power and Ethernet cables are firmly connected.
- Check that the IP Address, subnet mask, gateway, and DNS settings are correctly entered for the network
- In **Infrastructure** mode, make sure the same **Service Set Identifier (SSID)** is specified on the settings for the wireless clients and access points.

Check that the **Network Connection** for the wireless client is configured properly. Select **AP (Infrastructure)** when connecting to an access point. Double-click on the **WLAN** icon in the taskbar > click on **Configuration** to change the settings for the wireless adapter.

If **Security** is enabled, make sure that the correct encryption keys are entered on both the DWA-127 and the access point. Double-click on the **WLAN** icon in the taskbar > click **Encryption**. Check to see that the key selected is set to the same key as other devices on the network.

Wireless Basics

D-Link wireless products are based on industry standards to provide easy-to-use and compatible high-speed wireless connectivity within your home, business or public access wireless networks. Strictly adhering to the IEEE standard, the D-Link wireless family of products will allow you to securely access the data you want, when and where you want it. You will be able to enjoy the freedom that wireless networking delivers.

A wireless local area network (WLAN) is a cellular computer network that transmits and receives data with radio signals instead of wires. Wireless LANs are used increasingly in both home and office environments, and public areas such as airports, coffee shops and universities. Innovative ways to utilize WLAN technology are helping people to work and communicate more efficiently. Increased mobility and the absence of cabling and other fixed infrastructure have proven to be beneficial for many users.

Wireless users can use the same applications they use on a wired network. Wireless adapter cards used on laptop and desktop systems support the same protocols as Ethernet adapter cards.

Under many circumstances, it may be desirable for mobile network devices to link to a conventional Ethernet LAN in order to use servers, printers or an Internet connection supplied through the wired LAN. A Wireless Router is a device used to provide this link.

What is Wireless?

Wireless or Wi-Fi technology is another way of connecting your computer to the network without using wires. Wi-Fi uses radio frequency to connect wirelessly, so you have the freedom to connect computers anywhere in your home or office network.

Why D-Link Wireless?

D-Link is the worldwide leader and award winning designer, developer, and manufacturer of networking products. D-Link delivers the performance you need at a price you can afford. D-Link has all the products you need to build your network.

How does wireless work?

Wireless works similar to how cordless phone work, through radio signals to transmit data from one point A to point B. But wireless technology has restrictions as to how you can access the network. You must be within the wireless network range area to be able to connect your computer. There are two different types of wireless networks Wireless Local Area Network (WLAN), and Wireless Personal Area Network (WPAN).

Wireless Local Area Network (WLAN)

In a wireless local area network, a device called an Access Point (AP) connects computers to the network. The access point has a small antenna attached to it, which allows it to transmit data back and forth over radio signals. With an indoor access point as seen in the picture, the signal can travel up to 300 feet. With an outdoor access point the signal can reach out up to 30 miles to serve places like manufacturing plants, industrial locations, college and high school campuses, airports, golf courses, and many other outdoor venues.

Wireless Personal Area Network (WPAN)

Bluetooth is the industry standard wireless technology used for WPAN. Bluetooth devices in WPAN operate in a range up to 30 feet away.

Compared to WLAN the speed and wireless operation range are both less than WLAN, but in return it doesn't use nearly as much power which makes it ideal for personal devices, such as mobile phones, PDAs, headphones, laptops, speakers, and other devices that operate on batteries.

Who uses wireless?

Wireless technology has become so popular in recent years that almost everyone is using it, whether it's for home, office, business, D-Link has a wireless solution for it.

Home

- Gives everyone at home broadband access
- Surf the web, check email, instant message, and etc
- Gets rid of the cables around the house
- Simple and easy to use

Small Office and Home Office

- Stay on top of everything at home as you would at office
- Remotely access your office network from home
- Share Internet connection and printer with multiple computers
- No need to dedicate office space

Where is wireless used?

Wireless technology is expanding everywhere not just at home or office. People like the freedom of mobility and it's becoming so popular that more and more public facilities now provide wireless access to attract people. The wireless connection in public places is usually called "hotspots".

Using a D-Link USB Adapter with your laptop, you can access the hotspot to connect to Internet from remote locations like: Airports, Hotels, Coffee Shops, Libraries, Restaurants, and Convention Centers.

Wireless network is easy to setup, but if you're installing it for the first time it could be quite a task not knowing where to start. That's why we've put together a few setup steps and tips to help you through the process of setting up a wireless network.

Tips

Here are a few things to keep in mind, when you install a wireless network.

Centralize your router or Access Point

Make sure you place the router/access point in a centralized location within your network for the best performance. Try to place the router/access point as high as possible in the room, so the signal gets dispersed throughout your home. If you have a two-story home, you may need a repeater to boost the signal to extend the range.

Eliminate Interference

Place home appliances such as cordless telephones, microwaves, and televisions as far away as possible from the router/access point. This would significantly reduce any interference that the appliances might cause since they operate on same frequency.

Security

Don't let your next-door neighbors or intruders connect to your wireless network. Secure your wireless network by turning on the WPA or WEP security feature on the router. Refer to product manual for detail information on how to set it up.

Wireless Modes

There are basically two modes of networking:

- **Infrastructure** – All wireless clients will connect to an access point or wireless router.
- **Ad-Hoc** – Directly connecting to another computer, for peer-to-peer communication, using wireless network adapters on each computer.

An Infrastructure network contains an Access Point or wireless router. All the wireless devices, or clients, will connect to the wireless router or access point.

An Ad-Hoc* network contains only clients, such as laptops with wireless USB Adapters. All the adapters must be in Ad-Hoc mode to communicate.

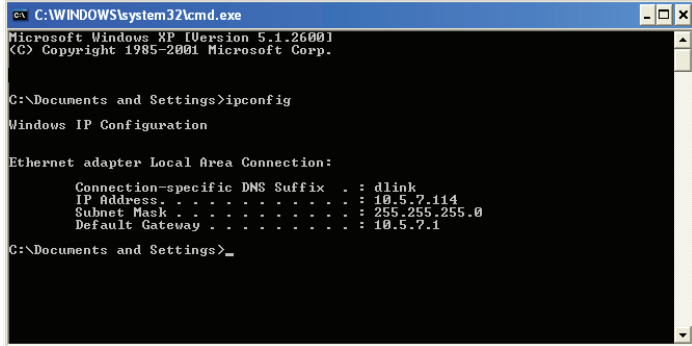
Networking Basics

Check your IP address

After you install your new D-Link wireless adapter and have established a wireless connection, by default, the TCP/IP settings should be set to obtain an IP address from a DHCP server (i.e. router) automatically. To verify your IP address, please follow the steps below.

Windows® XP Users

- Click on **Start > Run**. In the run box type *cmd* and click **OK**.
- At the prompt, type *ipconfig* and press **Enter**.
- This will display the IP address, subnet mask, and the default gateway of your adapter.



```

C:\WINDOWS\system32\cmd.exe
Microsoft Windows XP [Version 5.1.2600]
(C) Copyright 1985-2001 Microsoft Corp.

C:\Documents and Settings>ipconfig

Windows IP Configuration

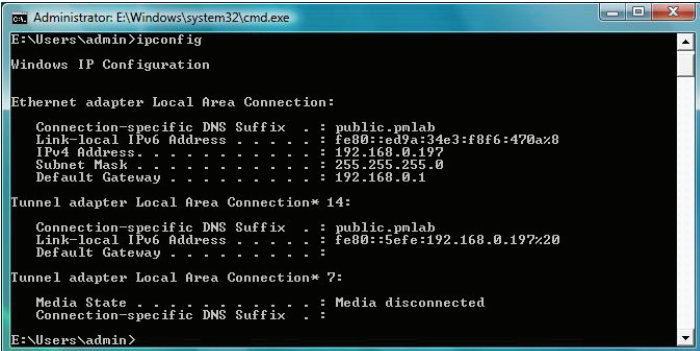
Ethernet adapter Local Area Connection:

    Connection-specific DNS Suffix  . : dlink
    IP Address. . . . . : 10.5.7.114
    Subnet Mask . . . . . : 255.255.255.0
    Default Gateway . . . . . : 10.5.7.1

C:\Documents and Settings>
  
```

Windows® 7/Windows Vista® Users

- Click **Start > All Programs > Accessories > Command Prompt**. You may need administrative access to run this application.
- For all additional prompt windows inquiring of running the command prompt application, select **Yes, OK, or Continue**.
- At the prompt, type *ipconfig* and press **Enter**.
- This will display the IP address, subnet mask, and default gateway of your adapter.



```

Administrator: E:\Windows\system32\cmd.exe
E:\Users\admin>ipconfig

Windows IP Configuration

Ethernet adapter Local Area Connection:

    Connection-specific DNS Suffix  . : public.pmlab
    Link-local IPv6 Address . . . . . : fe80::ed9a:34e3:f8f6:470a%8
    IPv4 Address. . . . . : 192.168.0.197
    Subnet Mask . . . . . : 255.255.255.0
    Default Gateway . . . . . : 192.168.0.1

Tunnel adapter Local Area Connection* 14:

    Connection-specific DNS Suffix  . : public.pmlab
    Link-local IPv6 Address . . . . . : fe80::5efe:192.168.0.197%20
    Default Gateway . . . . . :

Tunnel adapter Local Area Connection* 7:

    Media State . . . . . : Media disconnected
    Connection-specific DNS Suffix  . :

E:\Users\admin>
  
```

If the address is 0.0.0.0, check your adapter installation, security settings, and the settings on your router. Some firewall software programs may block a DHCP request on newly installed adapters.

Statically Assign an IP address

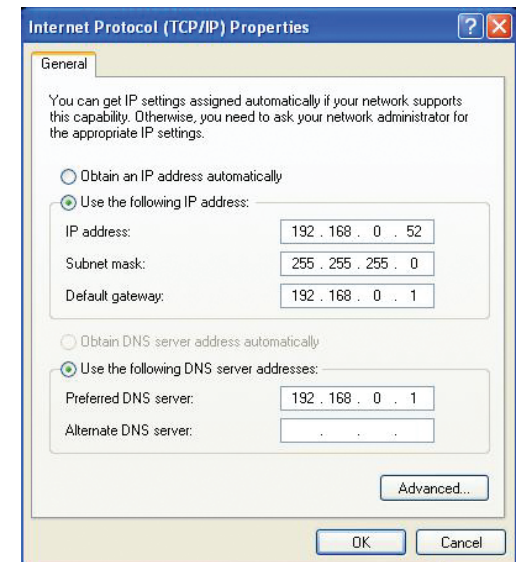
If you are not using a DHCP capable gateway/router, or you need to assign a static IP address, please follow the steps below:

Windows® XP Users

- **Windows® XP** - Click on **Start > Control Panel**. Make sure you are in Classic View. Double-click on the **Network Connections** icon.
- Right-click on the **Local Area Connection** which represents your D-Link wireless network adapter (or other adapter) which will be connected to your router.
- Highlight **Internet Protocol (TCP/IP)** and click **Properties**.
- Click **Use the following IP address** and enter an IP address that is on the same subnet as your network or LAN IP address on your router.

Example: If the router's LAN IP address is 192.168.0.1, make your IP address 192.168.0.X where X is a number between 2 and 99. Make sure that the number you choose is not in use on the network.

- Set **Default Gateway** the same as the LAN IP address of your router or gateway.
- Set **Primary DNS** the same as the LAN IP address of your router or gateway.
- The **Secondary DNS** is optional (you may enter a DNS server from your ISP).
- Click **OK** to save your settings.

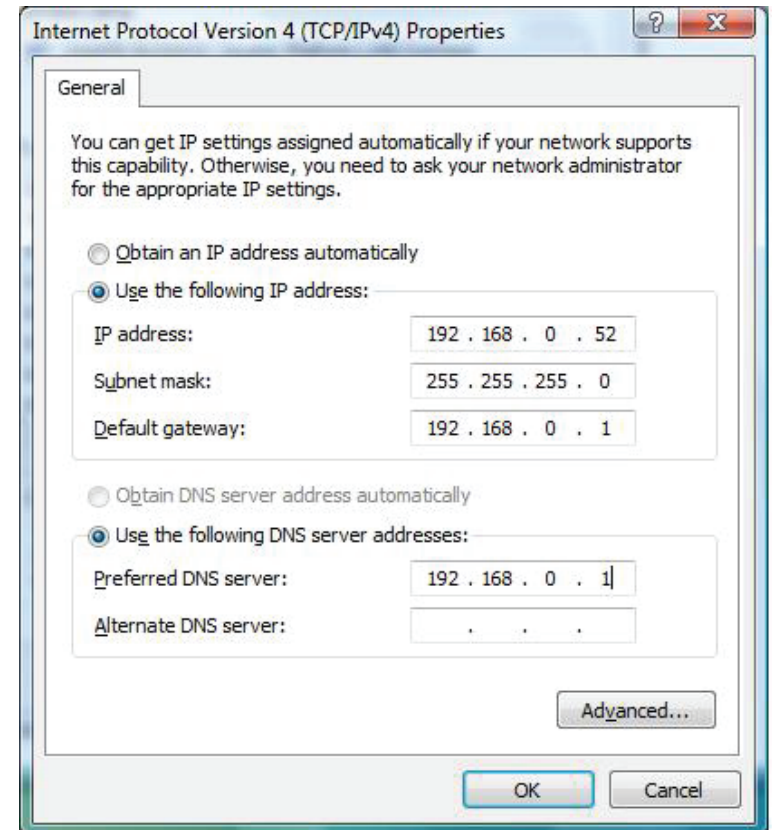


Windows® 7/Windows Vista® Users

- Click on **Start > Control Panel** (make sure you are in Classic View). Double-click on the **Network and Sharing Center** icon. If you are using Windows Vista, click on **Manage network connections** along the left panel in the window. For Windows 7, click on **Change adapter settings**.
- Right-click on the **Local Area Connection** which represents your D-Link wireless network adapter which will be connected to your network.
- Highlight **Internet Protocol Version 4 (TCP/IPv4)** and click **Properties**.
- Click **Use the following IP address** and enter an IP address that is on the same subnet as your network or LAN IP address on your router or network.

Example: If the router's LAN IP address is 192.168.0.1, make your IP address 192.168.0.X where X is a number between 2 and 99. Make sure that the number you choose is not in use on the network.

- Set **Default Gateway** the same as the LAN IP address of your router or gateway.
- Set **Primary DNS** the same as the LAN IP address of your router or gateway.
- The **Secondary DNS** is optional (you may enter a DNS server from your ISP).
- Click **OK** to save your settings.



Technical Specifications

Standards

- IEEE 802.11n
- IEEE 802.11g

Bus Type

- USB 2.0 (1.1 compatible)

Security

- WPA/WPA2 - Wi-Fi Protected Access (TKIP, MIC, IV Expansion, Shared Key Authentication)
- WPS (PBC)

Media Access Control

- CSMA/CA with ACK

Frequency Range

- 2.4GHz to 2.483GHz

Power Consumption (802.11n)

- Tx: 230 mA
- Rx: 140 mA

Modulation Technology

- Orthogonal Frequency

Division Multiplexing (OFDM)

- Complementary Code Keying (CCK)

Transmitter Power Output

- 17dBm

Operating Voltage

- 5VDC +/- 5%

Operating Temperature

- 32°F to 104°F (0°C to 40°C)

Operating Humidity

- 10% to 90% maximum (non-condensing)

Dimensions

- 210 x 15 x 14mm

Weight

- 12.8g

Certifications

- FCC Class B
- CE
- C-Tick
- IC

* Maximum wireless signal rate derived from IEEE Standard 802.11n and 802.11g specifications. Actual data throughput will vary. Network conditions and environmental factors, including volume of network traffic, building materials and construction, and network overhead, lower actual data throughput rate. Environmental factors will adversely affect wireless signal range.