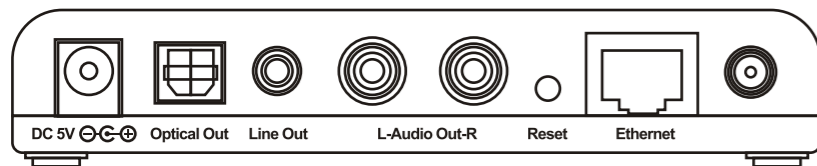


1. Hardware Installation

1. Connect RJ-45 cable from Ethernet port to a Hub or Switch or directly to your PC.
2. Attach antenna to the connector on the rear side.
3. Connect Power Adapter and turn on AW-GA200.
4. Connect optical out/Line out/ or audio out to home stereo system or powered speaker.



2. Installation and Setup Wizard

Install your wireless audio driver and utility

Insert Installation CD onto your PC, then click start button and select run, enter "d:\setup.exe" (if "D" is the letter of your PC's CDROM drive).

Setup Wizard

After Setup process is complete, please follow Instructions to perform Device Configuration



Step 1: Operation mode

Device Name: You can change device name to manage multi-audio AP/Receiver on same network. The device name will display on wireless audio utility.

Create a new network

If you do not have Access Point in your network and wish AW-GA200 to function as AP, please choose "Create a new network"

For first time configuration, Please choose this item.



Join an existing network

If you already have available wireless network at home, you can configure GA200 as "Client" mode to join an available network.

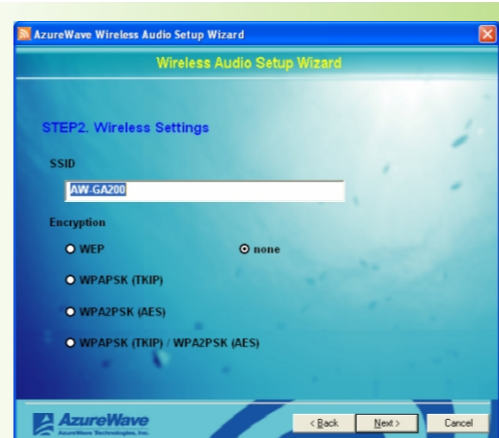
For detailed setting, please refer to user's manual

Step 2 Wireless setting

If you choose "Create a new network" and click on Next, you can setup SSID and encryption type for wireless security.

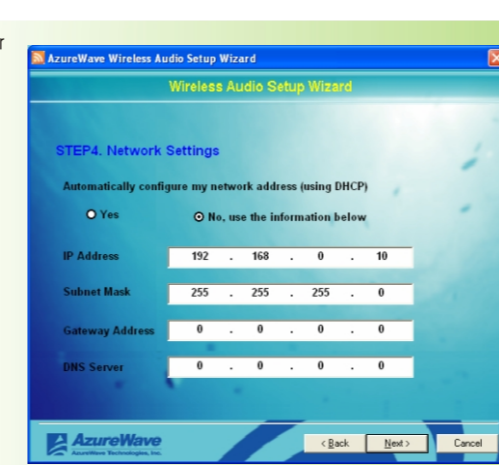
Step 3 Encryption Key

After encryption method being made, please follow encryption instruction to input the security key.



Step 4 Network Settings

You can choose either to enable or disable DHCP feature. To disable the DHCP feature you need to obtain relevant IP address, Subnet Mask, Gateway Address and DNS Server's information and input all information to the correspondent fields.



Step 5 Finish

After DHCP setting is being set, click on Finish to close the Wireless Audio Setup Wizard.

3. Connecting PC to AW-GA200

After your complete Setup Wizard process, AW-GA200 will be configured as an Access Point according to your previous setup. Please connect you PC to AW-GA200 directly though Wireless LAN or LAN port. Then open the wireless audio utility.

If your PC connects to AW-GA200 successfully, you can find AW-GA200 on Device Management table. Please select it and click "connect" button

If audio connection is successful, you can find blue LED(in the front side of AW-GA200) is turned on. Then you can open your PC audio player to stream audio.



Blue LED will be flashing during audio streaming. When the blue LED start to flashing, please connect AW-GA200 to your speaker or home stereo system to enjoy the music!