

# Declaration of Conformity

We, Manufacturer/Importer  
(full address)

**ASUS COMPUTER GmbH HARKORT STR. 25  
40880 RATINGEN, BRD. GERMANY**

declare that the product  
(description of the apparatus, system, installation to which it refers)  
**is in conformity with**

(reference to the specification under which conformity is declared)

in accordance with 2004/108/EC-EMC Directive and 1995/5 EC-R & TTE Directive

**Product name: LAN PCI Adapter  
Model name : PCI-G31**

- |   |   |   |  |
|---|---|---|--|
| <input type="checkbox"/> <b>EN 50392</b>              | Generic standard to demonstrate the compliance of electronic and electrical apparatus with the basic restrictions related to human exposure to electromagnetic fields (0 Hz-300GHz)   | <input type="checkbox"/> <b>EN 61000-3-2*</b>   | Disturbances in supply systems caused  |
| <input type="checkbox"/> <b>EN 50360<br/>EN 50361</b> | the limitation of exposure of the general public to electromagnetic network equipment fields (0 Hz to 300 GHz) International Commission on Non-Ionizing Radiation Protection (1998), Guidelines for limiting exposure in time-varying electric, magnetic, and electromagnetic fields  | <input type="checkbox"/> <b>EN 61000-3-3*</b>   | Disturbances in supply systems caused  |
| <input type="checkbox"/> <b>EN50081-1</b>             | Generic emission standard Part 1: Residual, commercial and light industry   | <input type="checkbox"/> <b>EN 301893</b>   | Broadband Radio Access Networks (BRAN); 5 GHz high performance RLAN; Harmonized EN covering essential requirements of article 3.2 of the R&TTE Directive   |
| <input type="checkbox"/> <b>EN50082-2</b>             | Generic immunity standard Part 2: Industrial environment  | <input checked="" type="checkbox"/> <b>EN 300328</b>  | Electromagnetic compatibility and Radio spectrum Matters (ERM); wideband transmission equipment operating in the 2.4GHz ISM band and using spread spectrum modulation techniques. Harmonized EN covering essential requirements under article 3.2 of the R&TTE Directive   |
| <input type="checkbox"/> <b>EN 55020</b>              | Immunity from radio interference of broadcast receivers and associated equipment  | <input type="checkbox"/> <b>EN300440-1</b><br><input type="checkbox"/> <b>EN300440 -2</b>                         | Electromagnetic compatibility and Radio spectrum Matters (ERM); Short Range Devices (SRD); Radio equipment to be used in the 1 GHz to 40 GHz frequency range; Part 1: Technical characteristics and test methods<br>Part 2: Harmonized EN under article 3.2 of the R&TTE Directive                                     |
| <input type="checkbox"/> <b>EN 55022</b>              | Limits and methods of measurement of radio disturbance characteristics of information technology equipment  | <input type="checkbox"/> <b>EN 301511</b>   | Global System for Mobile communications (GSM); Harmonized EN for mobile stations in the GSM 900 and GSM 1800 bands covering essential requirements under article 3.2 of the R&TTE directive (1999/5/EC)  |
| <input type="checkbox"/> <b>EN 55024</b>              | Information Technology equipment-Immunity characteristics-Limits and methods of measurement   | <input type="checkbox"/> <b>EN 301 908-1</b><br><input type="checkbox"/> <b>EN 301 908-2</b>                      | Electromagnetic compatibility and Radio spectrum Matters (ERM); Base Stations (BS), Repeaters and User Equipment (UE) for IMT-2000 Third-Generation cellular networks; Part 1: Harmonized EN for IMT-2000, introduction and common requirements, covering essential requirements of article 3.2 of the R&TTE Directive |
| <input type="checkbox"/> <b>EN 55013</b>              | Limits and methods of measurement of radio disturbance characteristics of broadcast receivers and associated equipment  | <input checked="" type="checkbox"/> <b>EN 301489-1</b><br><input checked="" type="checkbox"/> <b>EN 301489-17</b> | Electromagnetic compatibility and Radio spectrum Matters (ERM); Electromagnetic compatibility(EMC) standard for radio equipment and services; Part 17: Specific conditions for wideband data and HIPERLAN equipment, Part1: Common technical requirements  |
| <input type="checkbox"/> <b>EN 50385</b>              | Product standard to demonstrate the compliances or radio Base stations and fixed terminal stations for wireless telecommunication systems with the basic restriction or the reference level to human exposure to radio frequency electromagnetic field (110MHZ-40GHZ) -General public |   |  |
| <input type="checkbox"/> <b>EN 300386</b>             | Electromagnetic compatibility and Radio spectrum Matters (ERM); Telecommunication Electromagnetic Compatibility (EMC) requirements  |   |  |
| <input checked="" type="checkbox"/> <b>CE marking</b> |   |   |  |



(EC conformity marking)

**The manufacturer also declares the conformity of above mentioned product with the actual required safety standards in accordance with LVD 2006/95/EC**

- |  |   |   |   |
|--|---|---|---|
| <input type="checkbox"/> <b>EN 60065</b> | Safety requirements for mains operated electronic and related apparatus for household and similar general use | <input checked="" type="checkbox"/> <b>EN 60950-1</b> | Safety for information technology equipment including electrical business equipment |
|--|---|---|---|

**Manufacturer/Importer**

(Stamp)

**Date : Jul. 30, 2008**

Signature: \_\_\_\_\_

Name : Jonathan Tseng

## Appendix

### Federal Communications Commission Statement

This device complies with Part 15 of the FCC Rules. Operation is subject to the following two conditions:

- This device may not cause harmful interference.
- This device must accept any interference received, including interference that may cause undesired operation.

This equipment has been tested and found to comply with the limits for a class B digital device, pursuant to part 15 of the FCC Rules. These limits are designed to provide reasonable protection against harmful interference in a residential installation.

This equipment generates, uses and can radiate radio frequency energy and, if not installed and used in accordance with the instructions, may cause harmful interference to radio communications. However, there is no guarantee that interference will not occur in a particular installation. If this equipment does cause harmful interference to radio or television reception, which can be determined by turning the equipment off and on, the user is encouraged to try to correct the interference by one or more of the following measures:

- Reorient or relocate the receiving antenna.
- Increase the separation between the equipment and receiver.
- Connect the equipment into an outlet on a circuit different from that to which the receiver is connected.
- Consult the dealer or an experienced radio/TV technician for help.



---

**Caution:** Any changes or modifications not expressly approved by the party responsible for compliance could void the user's authority to operate the equipment.

---

### Prohibition of Co-location

This device and its antenna(s) must not be co-located or operating in conjunction with any other antenna or transmitter.

### Safety Information

To maintain compliance with FCC's RF exposure guidelines, this equipment should be installed and operated with minimum distance 20cm between the radiator and your body. Use on the supplied antenna.

## **Declaration of Conformity for R&TTE directive 1999/5/EC**

Essential requirements – Article 3

Protection requirements for health and safety – Article 3.1a

Testing for electric safety according to EN 60950-1 has been conducted. These are considered relevant and sufficient.

Protection requirements for electromagnetic compatibility – Article 3.1b

Testing for electromagnetic compatibility according to EN 301 489-1 and EN 301 489-17 has been conducted. These are considered relevant and sufficient.

Effective use of the radio spectrum – Article 3.2

Testing for radio test suites according to EN 300 328- 2 has been conducted. These are considered relevant and sufficient.

## **CE Mark Warning**

This is a Class B product, in a domestic environment, this product may cause radio interference, in which case the user may be required to take adequate measures.

## **Reach**

Complying with the REACH(Registration, Evaluation, Authorization, and Restriction of Chemicals) regulatory framework, we publish these chemical substances in our products at ASUS REACH website at <http://green.asus.com/english/REACH.htm>.

## **DGT警語**

經型式認證合格之低功率射頻電機，非經許可，公司、商號或使用者均不得擅自變更頻率、加大功率或變更原設計之特性及功能。

低功率射頻電機之使用不得影響飛航安全及干擾合法通信；經發現有干擾現象時，應立即停用，並改善至無干擾時方得繼續使用。

前項合法通信，指依電信法規定作業之無線電通信。

低功率射頻電機須忍受合法通信或工業、科學及醫療用電波輻射性電機設備之干擾。

## Index

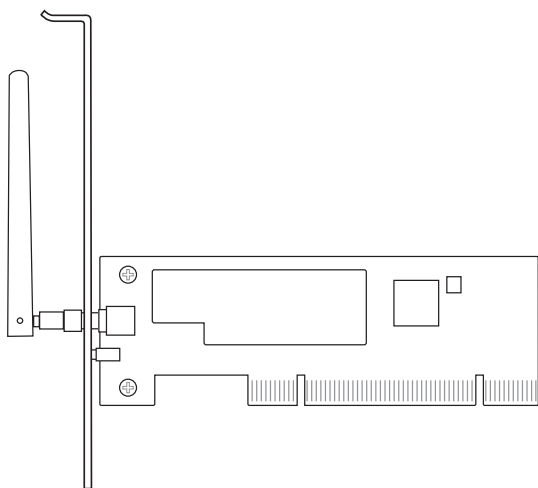
1. English.....	1
2. Bahasa Indonesia.....	6
3. ไทย.....	10
4. Türkçe.....	14
5. 繁體中文.....	18
6. 简体中文.....	22



# PCI-G31

Wireless Local Area Network Card

(For 802.11g & 802.11b Wireless Networks)



**Quick Start Guide**

# 1. Introduction

## 1.1 Package contents

Check your PCI-G31 WLAN Card package for the following items.

- ASUS PCI-G31 WLAN Card x1
- External dipole antenna x1
- Quick Start Guide x1
- Support CD x1
- Low profile bracket x1
- Warranty Card x1



**NOTE:** If any of the above items is damaged or missing, contact your retailer immediately.

## 1.2 System requirements

Before using the PCI-G31 WLAN Card, check if your system meets the following requirements:

- Windows® Vista/XP/2000/ME
- Standard 32-bit PCI slot
- 32MB system memory or larger
- 300MHz processor or higher

## 1.3 Hardware

### Status indicator

The PCI-G31 WLAN Card comes with a status indicator that shows the realtime status of the WLAN card.

ON: The WLAN card is enabled.

Blinking: The WLAN card has connected to a wireless network successfully and data is being received or transmitted.

OFF: The WLAN card is disabled.

### External dipole antenna

The PCI-G31 WLAN Card package includes an external dipole antenna. We recommend that you straighten up the antenna for the maximum range and best link quality.



## 2. Installing the PCI-G31 driver and utilities



**IMPORTANT:** Install the ASUS PCI-G31 WLAN Card into your computer before installing the driver and utilities from the bundled Support CD.

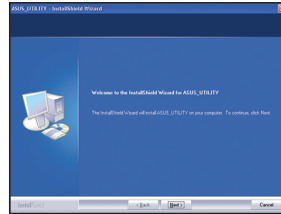
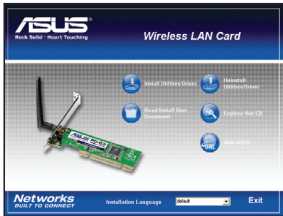
To install the driver and utilities for your ASUS PCI-G31 WLAN Card:

1. Place the bundled Support CD into the optical drive. An Autorun screen appears if the Autorun function is enabled on your computer.

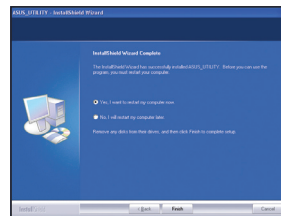
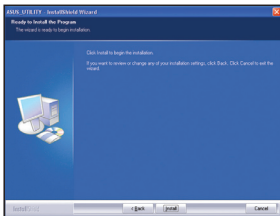


**NOTE:** If the Autorun function is not enabled on your computer, double-click **SETUP.EXE** from the root directory to run the Support CD.

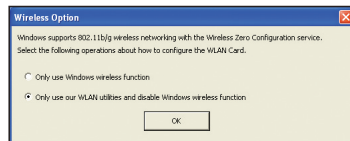
2. From the Autorun screen, select your language and click **Install Utilities/Driver**.
3. An **InstallShield Wizard** screen appears. Click **Next** to continue.



4. Click **Install** to start the installation.
5. Select **Yes, I want to restart my computer now**. Click **Finish** to complete the installation.



6. After your computer reboots, select **Only use our WLAN utilities and disable Windows wireless function** to allow the ASUS utility to manage your WLAN card. Click **OK**.



## 3. Configuring PCI-G31 using ASUS utility

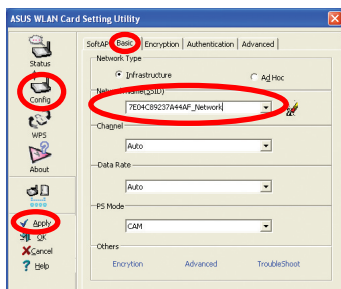
### 3.1 Connecting to a wireless network manually

To connect PCI-G31 to an access point (AP) (Infrastructure mode) or a station (Ad Hoc mode) manually:

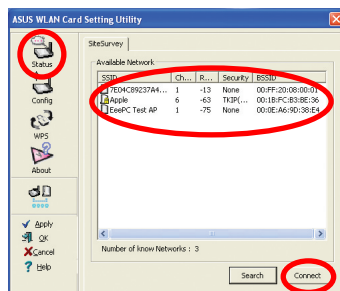
1. Right-click the ASUS WLAN Card Setting Utility icon in the Windows® system tray, then select **Wireless Setting**.



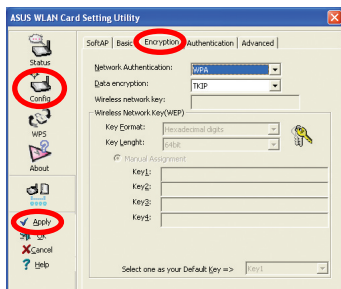
2. Set the **SSID** of your WLAN card to the same as that of the AP or station you are trying to connect to. Click **Apply**.



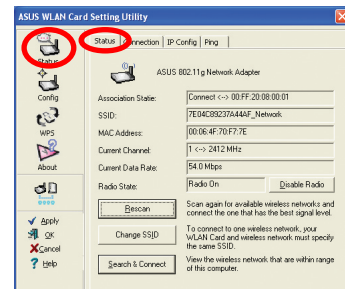
You may also click **Status > Search & Connect** to display the **SiteSurvey** page, then select a network from the **Available Network** list. Click **Connect**.



3. If Security is enabled on the AP or station, do the same security settings on your WLAN card as those on the AP or station. Click **Apply**.



Setup is completed. The **Status** page displays information such as the association state, current data rate, and radio state.







## 3.2 Connecting to a wireless network using WPS

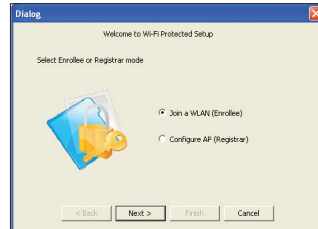
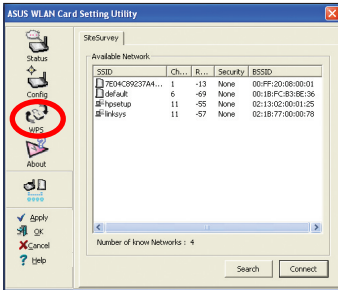
The ASUS PCI-G31 WLAN Card supports the WPS function that helps you set up a secure wireless network easily.



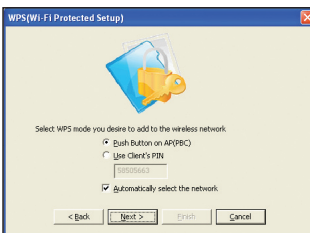
**IMPORTANT:** Ensure that the AP or station you are trying to connect to supports the WPS function.

To connect PCI-G31 to a WPS-enabled AP or station using the WPS push button:

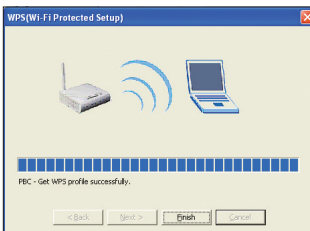
1. Click the **WPS** tab.
2. Select **Join a WLAN (Enrollee)**, then click **Next**.



3. Select **Push Button on AP (PBC)**, then click **Next**.
4. Press the WPS button on the AP or station to establish a wireless connection. The picture indicates that WPS is scanning for the network.



5. Click **Finish**. The picture indicates that your WLAN card has connected to the network successfully.



**NOTE:** For more details on how to use this WLAN card, refer to the user manual included in the Support CD.

# 1. Pendahuluan

## 1.1 Isi kemasan

---

Pastikan kemasan Kartu WLAN PCI-G31 berisi item berikut ini.

- 1 Kartu WLAN PCI-G31 ASUS
- 1 Antena dipole eksternal
- Panduan Ringkas
- 1 CD Dukungan
- 1 Braket profil
- 1 dasar Kartu Garansi



**CATATAN:** Jika salah satu item di atas rusak atau hilang, segera hubungi peritel Anda.

---

## 1.2 Persyaratan sistem

---

Sebelum menggunakan Kartu WLAN PCI-G31, pastikan sistem telah memenuhi persyaratan berikut:

- Windows® Vista/XP/2000/ME
- Slot PCI 32-bit standar
- Memori sistem berkapasitas 32MB atau lebih besar
- Prosesor 300MHz atau lebih tinggi

## 1.3 Perangkat keras

---

### Indikator status

Kartu WLAN PCI-G31 dilengkapi indikator status yang menunjukkan status realtime kartu WLAN tersebut.

**HIDUP:** Kartu WLAN aktif.

**Berkedip:** Kartu WLAN berhasil terhubung ke jaringan nirkabel dan data sedang diterima atau dikirimkan.

**MATI:** Kartu WLAN tidak aktif.

### Antena dipole eksternal

Kemasan Kartu WLAN PCI-G31 dilengkapi antena dipole eksternal. Untuk jangkauan maksimal dan kualitas sambungan terbaik, sebaiknya pasang antena tersebut.



## 2. Menginstal utilitas dan driver PCI-G31



**PENTING:** Instal terlebih dulu Kartu WLAN PCI-G31 ASUS ke komputer sebelum menginstal driver dan utilitas dari CD Dukungan yang disertakan.

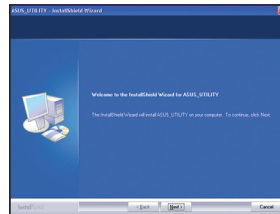
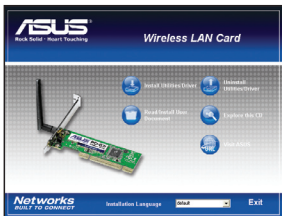
Untuk menginstal driver dan utilitas Kartu WLAN PCI-G31 ASUS:

1. Masukkan CD Dukungan yang disertakan ke dalam drive optik. Layar Autorun akan ditampilkan jika fungsi Autorun pada komputer diaktifkan.

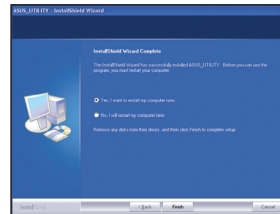
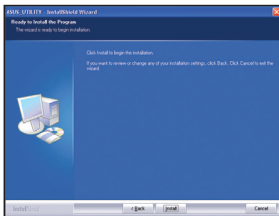


**CATATAN:** Jika fungsi Autorun tidak diaktifkan di komputer Anda, klik dua kali SETUP.EXE dari direktori akar untuk menjalankan CD Dukungan.

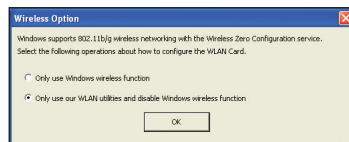
2. Dari layar Autorun, pilih bahasa, kemudian klik **Install Utilities (Instal Utilitas)/Driver**.
3. Layar **InstallShield Wizard (Wizard InstallShield)** akan ditampilkan. Klik **Next (Lanjut)** untuk melanjutkan.



4. Klik **Install (Instal)** untuk memulai penginstalan.
5. Pilih **Yes, I want to restart my computer now (Ya, Saya ingin menghidupkan ulang komputer saya sekarang)** Klik **Finish (Selesai)** untuk menyelesaikan penginstalan.



6. Setelah komputer menjalankan boot ulang, pilih **Only use our WLAN utilities and disable Windows wireless function (Hanya gunakan utilitas Windows kami dan nonaktifkan fungsi nirkabel Windows)** agar utilitas ASUS dapat mengelola kartu WLAN. Klik **OK**.



## 3. Mengkonfigurasi PCI-G31 menggunakan utilitas ASUS

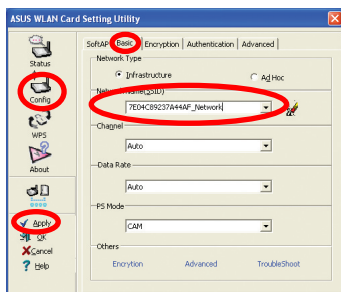
### 3.1 Membuat sambungan ke jaringan nirkabel secara manual

Untuk menyambungkan PCI-G31 ke AP (jalur akses) (mode Infrastructure) atau stasiun (mode Ad Hoc) secara manual:

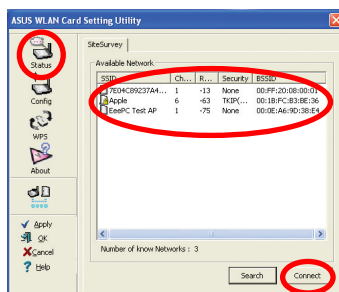
1. Klik kanan ikon **ASUS WLAN Card Setting Utility** (Utilitas Pengaturan **ASUS WLAN Card**) pada baris sistem Windows®, lalu pilih **Wireless Setting** (Pengaturan Nirkabel).



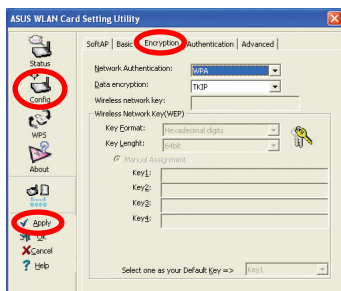
2. Atur SSID kartu WLAN ke AP atau stasiun yang sama seperti yang akan disambungkan. Klik **Apply** (Terapkan).



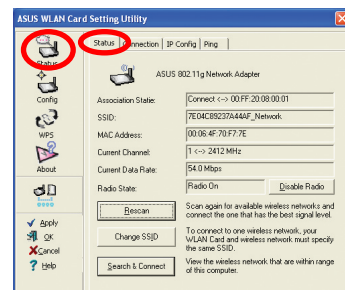
Anda juga dapat mengklik **Status > Search & Connect** (Cari & Sambung) untuk menampilkan halaman SiteSurvey, lalu memilih jaringan dari daftar **Available Network** (Jaringan Tersedia). Klik **Connect** (Sambung).



3. Jika **Security** (Keamanan) diaktifkan di AP atau stasiun, buat pengaturan keamanan pada kartu WLAN sama seperti pada AP atau stasiun tersebut. Klik **Apply** (Terapkan).



Konfigurasi selesai. Halaman Status akan menampilkan informasi seperti status keterkaitan, kecepatan data terkini, dan status radio.





## 3.2 Membuat sambungan ke jaringan nirkabel menggunakan WPS

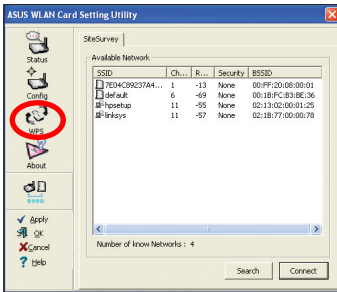
Kartu WLAN PCI-G31 ASUS mendukung fungsi WPS yang akan membantu Anda mengkonfigurasi jaringan nirkabel aman dengan mudah.



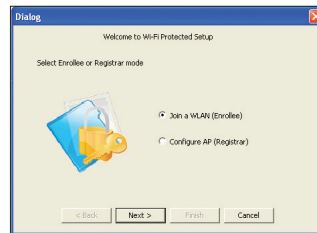
**PENTING:** Pastikan AP atau stasiun yang Anda coba sambungkan telah mendukung fungsi WPS.

Untuk menyambungkan PCI-G31 ke AP atau stasiun yang mendukung WPS menggunakan tombol tekan WPS:

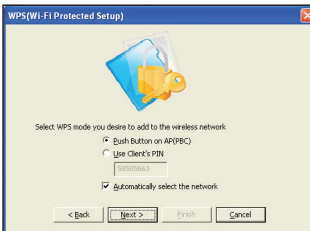
1. Klik tab **WPS**.



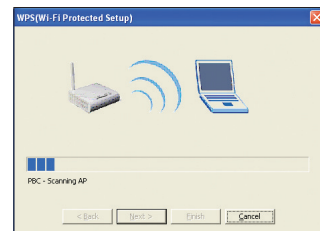
2. Pilih **Join a WLAN (Gabung ke WLAN) (Enrollee) (Pendaftar)**, kemudian klik **Next (Lanjut)**.



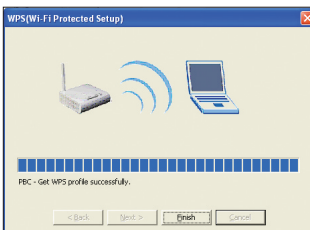
3. Pilih **Push Button on AP (Tekan Tombol pada AP) (PBC)**, kemudian klik **Next (Lanjut)**.



4. Tekan tombol WPS pada AP atau stasiun untuk membuat sambungan nirkabel. Gambar menunjukkan WPS sedang memindai jaringan.



5. Klik **Finish (Selesai)**. Gambar menunjukkan kartu WLAN telah berhasil terhubung ke jaringan.



**CATATAN:** Untuk informasi lebih rinci tentang cara menggunakan kartu WLAN, lihat panduan pengguna yang disertakan dalam CD Dukungan ini.

## 1. บทนำ

### 1.1 รายการในบรรจุภัณฑ์

ตรวจสอบแพ็คเกจของการ์ด PCI-G31 WLAN ว่ามีรายการต่อไปนี้ครบถ้วน

- การ์ด ASUS PCI-G31 WLAN x1
- เส้าอากาศเส้าคู่ภายนอก x1
- คู่มือเริ่มต้นอย่างเร็ว x1
- แผ่น CD สันับสนุน x1
- แผ่นโวลหยึดโครงเครื่องต่ำ x1
- ใบรับประกัน x1



**หมายเหตุ:** ถ้ามีรายการใดด้านบนเสียหาย หรือหายไป  
ให้ติดต่อร้านค้าปลีกของคุณทันที

### 1.2 ความต้องการของระบบ

ก่อนที่จะใช้การ์ด PCI-G31 WLAN,  
ให้ตรวจสอบว่าระบบของคุณมีคุณสมบัติตรงตามความต้องการต่อไปนี้:

- Windows® Vista/XP/2000/ME
- สล็อต PCI 32 บิตมาตรฐาน
- หน่วยความจำระบบ 32MB หรือมากกว่า
- โพรเซสเซอร์ 300MHz หรือสูงกว่า

### 1.3 ฮาร์ดแวร์

#### ตัวแสดงสถานะ

การ์ด PCI-G31 WLAN มาพร้อมกับตัวแสดงสถานะที่บอกถึงสถานะเรียลไทม์ของการ์ด WLAN

ติด: การ์ด WLAN เปิดทำงาน

กะพริบ: การ์ด WLAN เชื่อมต่อกับเครือข่ายไร้สายสำเร็จ และกำลังรับหรือส่งข้อมูล

ดับ: การ์ด WLAN ปิดทำงาน

#### เส้าอากาศเส้าคู่ภายนอก

ภายในกล่องบรรจุการ์ด PCI-G31 WLAN มีเส้าอากาศเส้าคู่ภายนอกมาให้  
เราแนะนำให้คุณยึดเส้าอากาศออก เพื่อให้ได้ระยะการทำงานสูงสุด  
และคุณภาพการเชื่อมโยงที่ดีที่สุด



## 2. การติดตั้งไดรเวอร์และยูทิลิตี้ PCI-G31



**สำคัญ:** ติดตั้งการ์ด ASUS PCI-G31 WLAN

ลงในคอมพิวเตอร์ของคุณก่อนที่จะติดตั้งไดรเวอร์และยูทิลิตี้จากแผ่น CD สลับสัณฐานที่มาพร้อมการ์ด

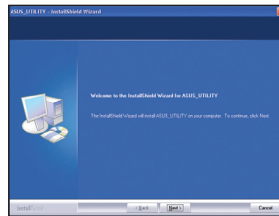
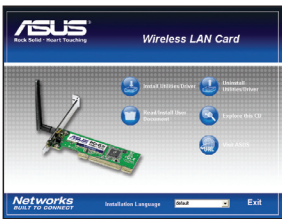
ในการติดตั้งไดรเวอร์และยูทิลิตี้สำหรับการ์ด ASUS PCI-G31 WLAN ของคุณ:

1. ใส่แผ่น CD สลับสัณฐานที่มาพร้อมการ์ดลงในออปติคัลไดรฟ์ หน้าจอ ทำงานอัตโนมัติ จะปรากฏขึ้นถ้าฟังก์ชัน ทำงานอัตโนมัติ เปิดอยู่บนคอมพิวเตอร์ของคุณ

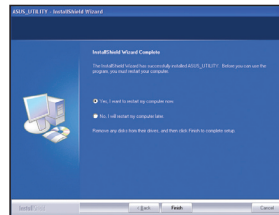
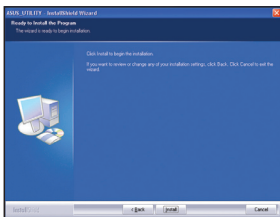


**หมายเหตุ:** ถ้าฟังก์ชัน ทำงานอัตโนมัติ ไม่เปิดทำงานบนคอมพิวเตอร์ของคุณ, ดับเบิลคลิกที่ SETUP.EXE จากไดเรกทอรีราก เพื่อรันแผ่น CD สลับสัณฐาน

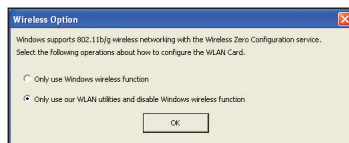
2. จากหน้าจอ ทำงานอัตโนมัติ, เลือกภาษา และคลิก **Install Utilities (ติดตั้งยูทิลิตี้)/Driver (ไดรเวอร์)**
3. หน้าจอ **InstallShield Wizard (ตัวช่วยสร้าง InstallShield)** จะปรากฏขึ้น คลิก **Next (ถัดไป)** เพื่อทำต่อไป



4. คลิก **Install (ติดตั้ง)** เพื่อเริ่มการติดตั้ง
5. เลือก **Yes, I want to restart my computer now (ใช่ ฉันต้องการเริ่มคอมพิวเตอร์ใหม่เดี๋ยวนี้)** คลิก **Finish (เสร็จสิ้น)** เพื่อทำการติดตั้งให้สมบูรณ์



6. หลังจากที่คุณคอมพิวเตอร์บูตใหม่, เลือก **Only use our WLAN utilities and disable Windows wireless function (ใช้เฉพาะยูทิลิตี้ WLAN ของเรา และปิดทำงานฟังก์ชันไร้สายของ Windows)** เพื่อให้ยูทิลิตี้ ASUS จัดการการ์ด WLAN ของคุณ คลิก **OK (ตกลง)**

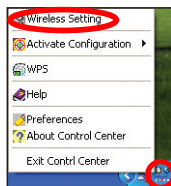


### 3. การกำหนดค่า PCI-G31 ใตยี่ห้อ ASUS

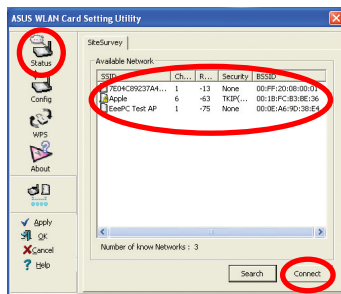
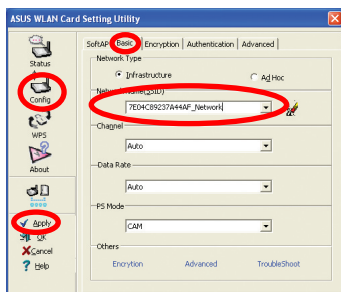
#### 3.1 การเชื่อมต่อไปยังเครือข่ายไร้สายแบบแมนนวล

ในการเชื่อมต่อ PCI-G31 ไปยังจุดเชื่อมต่อ (AP) (โหมดโครงข่ายพื้นฐาน) หรือสถานี (โหมด Ad Hoc) แบบแมนนวล:

1. คลิกขวาที่ไอคอนยูทิลิตี้การตั้งค่าการตั้งค่า ASUS WLAN Card ในถาดระบบของ Windows®, จากนั้นเลือก **Wireless Setting** (การตั้งค่าไร้สาย)
2. ตั้งค่า SSID ของการ์ด WLAN ของคุณให้เหมือนกับของ AP หรือสถานีที่คุณกำลังพยายามเชื่อมต่อไปยังคลิก **Apply** (ใช้)

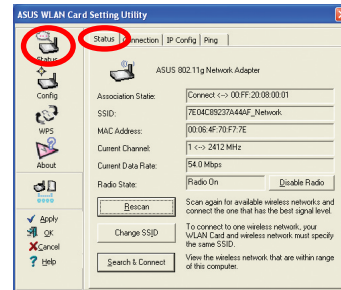
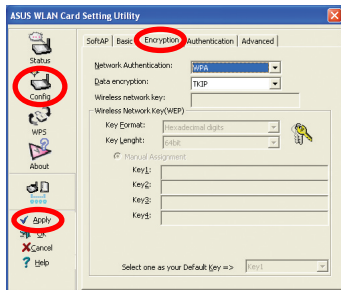


นอกจากนี้ คุณอาจคลิก **Status** (สถานะ) > **Search & Connect** (ค้นหา & เชื่อมต่อ) เพื่อแสดงหน้า **SiteSurvey** (สำรวจไซต์), จากนั้นเลือกเครือข่ายจากการ **Available Network** (เครือข่ายที่ใช้ได้) คลิก **Connect** (เชื่อมต่อ)



3. ถ้าระบบรักษาความปลอดภัยเปิดทำงานบน AP หรือสถานี, ให้ทำการปรับระบบรักษาความปลอดภัยบน WLAN ให้เหมือนกับของ AP หรือสถานีคลิก **Apply** (ใช้)

การตั้งค่าเสร็จสมบูรณ์ หน้า **Status** (สถานะ) แสดงข้อมูลต่างๆ เช่น สถานะการเชื่อมต่อ, อัตราการรับส่งข้อมูลปัจจุบัน และสถานะวิทยุ







## 3.2 การเชื่อมต่อไปยังเครือข่ายไร้สายโดยใช้ WPS

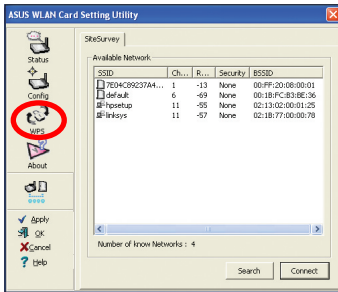
การ์ด ASUS PCI-G31 WLAN สนับสนุนฟังก์ชัน WPS ที่ช่วยให้คุณตั้งค่าเครือข่ายไร้สายที่มีการป้องกันได้อย่างง่ายดาย



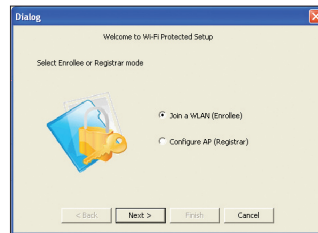
**สำคัญ:** ให้แน่ใจว่า AP หรือสถานที่ที่คุณกำลังพยายามเชื่อมต่อ สนับสนุนฟังก์ชัน WPS

ในการเชื่อมต่อ PCI-G31 ไปยัง AP หรือสถานที่ที่มีคุณสมบัติ WPS โดยไม่ต้องกด WPS:

### 1. คลิกแท็บ WPS



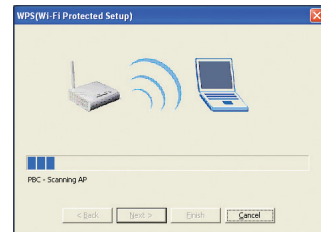
### 2. เลือก Join a WLAN (เข้าร่วม WLAN) (Enrollee) (ผู้เข้าร่วม), จากนั้นคลิก Next (ถัดไป)



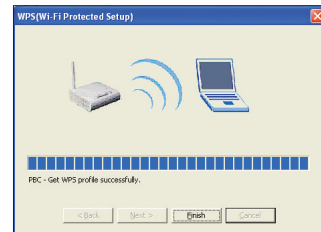
### 3. เลือก Push Button on AP (ปุ่มกดบน AP) (PBC), จากนั้นคลิก Next (ถัดไป)



### 4. กดปุ่ม WPS บน AP หรือสถานที่เพื่อสร้างการเชื่อมต่อไร้สาย ภาพแสดงถึง WPS กำลังสแกนหาเครือข่าย



### 5. คลิก Finish (เสร็จสิ้น) ภาพแสดงว่าการ์ด WLAN ของคุณเชื่อมต่อเข้ากับเครือข่ายสำเร็จแล้ว



**หมายเหตุ:** สำหรับรายละเอียดเพิ่มเติมเกี่ยวกับการใช้การ์ด WLAN นี้ ใหญ่ในคู่มือผู้ใช้ที่ใหม่มาในแผ่น CD สนับสนุน



## 1. Giriş

### 1.1 Paketin içindekiler

PCI-G31 WLAN Kartınızın paketinde aşağıdakilerin olup olmadığını kontrol edin.

- 1 adet ASUS PCI-G31 WLAN Kartı
- 1 adet harici iki kutuplu anten
- 1 adet Hızlı Başlangıç Kılavuzu
- 1 adet destek CD'si
- 1 adet düşük profilli braket
- 1 Garanti Kartı



**NOT:** Yukarıdaki öğelerden biri hasarlı veya eksikse, hemen satıcınıza başvurun.

### 1.2 Sistem gereksinimleri

PCI-G31 WLAN Kartını kullanmadan önce sisteminizin aşağıdaki gereksinimleri karşılayıp karşılamadığını kontrol edin:

- Windows® Vista/XP/2000/ME
- Standart 32 bit PCI yuvası
- 32MB veya üstü sistem belleği
- 300MHz veya üstü işlemci

### 1.3 Donanım

#### Durum göstergesi

PCI-G31 WLAN Kartında, WLAN kartının gerçek zamanlı durumunu gösteren bir durum göstergesi bulunur.

AÇIK: WLAN kartı etkindir.

Yanıp Sönme: WLAN kartı kablolu bir ağa başarılı bir şekilde bağlanmıştır ve veri alınmakta veya verilmektedir.

KAPALI: WLAN kartı devre dışıdır.

#### Harici iki kutuplu anten

PCI-G31 WLAN Kartı paketinde harici iki kutuplu bir anten bulunmaktadır. En iyi bağlantı kalitesi için anteni en yüksek mesafeye doğrultmanızı tavsiye ederiz.



## 2. PCI-G31 sürücü ve yardımcı programlarını yükleme



**ÖNEMLİ:** Aygıtla birlikte verilen Destek CD'sinden sürücü ve yardımcı programları yüklemeyen önce ASUS PCI-G31 WLAN Kartını bilgisayarınıza takın.

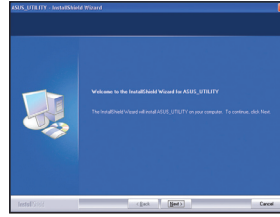
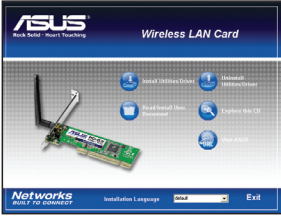
ASUS PCI-G31 WLAN Kartınızın sürücü ve yardımcı programlarını yüklemek için:

1. Aygıtla birlikte verilen Destek CD'sini optik sürücüye yerleştirin. Otomatik Çalıştır işlevi bilgisayarınızda etkinse bir Otomatik Çalıştır ekranı görünür.

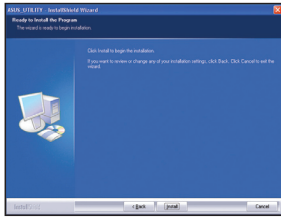


**NOT:** Bilgisayarınızda Otomatik Çalıştır işlevi etkin değilse, Destek CD'sini çalıştırmak için kök dizinden **SETUP.EXE** dosyasına çift tıklayın.

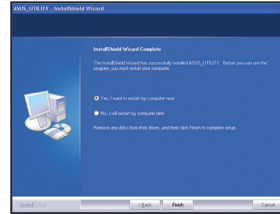
2. Otomatik Çalıştır ekranından, dilinizi seçin ve **Install Utilities (Yardımcı Programları)/Driver (Sürücüyü Yükle)** öğesine tıklayın.
3. **InstallShield Wizard (Kurulum Ekranı Sihirbazı)** ekranı görünür. Devam etmek için **Next (İleri)** öğesine tıklayın.



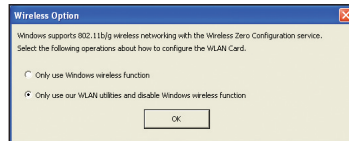
4. Kurulumu başlamak için **Install (Yükle)** öğesine tıklayın.



5. **Yes, I want to restart my computer now (Evet, bilgisayarımı şimdi yeniden başlatmak istiyorum)** öğesine tıklayın. Kurulumu tamamlamak için **Finish'e (Bitir)** tıklayın.



6. Bilgisayarınız yeniden başladıktan sonra, ASUS yardımcı programının WLAN kartınızı yönetmesini sağlamak için **Only use our WLAN utilities and disable Windows wireless function (Yalnızca WLAN yardımcı programlarımızı kullan ve Windows kablosuz işlevini devre dışı bırak)** öğesini seçin. **OK'e (TAMAM)** tıklayın.

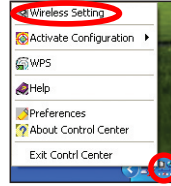


### 3. PCI-G31'i ASUS yardımcı programını kullanarak yapılandırma

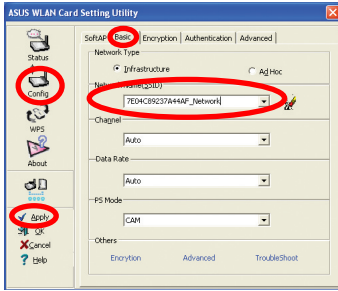
#### 3.1 Kablosuz bir ağa manuel olarak bağlanma

PCI-G31'i bir erişim noktasına (AP) (Altyapı modu) veya bir istasyona (Geçici Mod) manuel olarak bağlamak için:

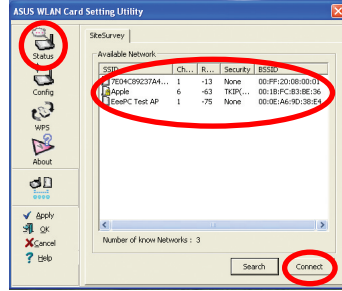
1. Windows® sistem çubuğundaki **ASUS WLAN Card Setting Utiliy (ASUS WLAN Kartı Ayarı Yardımcı Programı)** simgesine çift tıklayın ve ardından **Wireless Setting'i (Kablosuz Ayarı)** seçin.



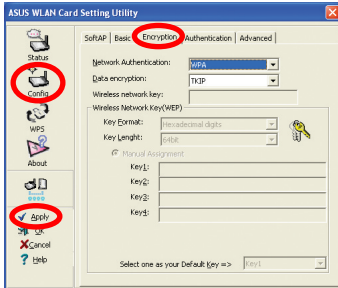
2. WLAN kartınızın **SSID'sini** bağlamayı denediğiniz AP veya istasyonunkiele aynı SSID'ye ayarlayın. **Apply'a (Uygula)** tıklayın.



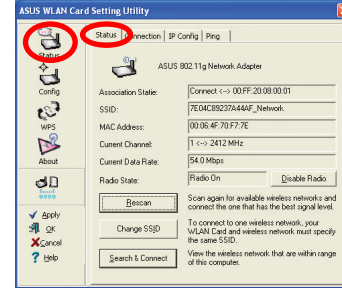
Ayrıca **SiteSurvey (Site Araştırması)** sayfasını görüntülemek için **Status (Durum) > Search & Connect'e (Ara ve Bağlan)** tıklayabilir ve **Available Network (Mevcut Ağ)** listesinden bir ağ seçebilirsiniz. **Connect'e (Bağlan)** tıklayın.



3. AP veya istasyonda Güvenlik etkinse, AP veya istasyondakiyle aynı güvenlik ayarlarını WLAN kartınızda da yapın. **Apply'a (Uygula)** tıklayın.



Kurulum tamamlanır. **Status (Durum)** sayfasında ilişki durumu, mevcut veri hızı ve radyo durumu gibi bilgiler gösterilir.





## 3.2 Kablosuz bir ağa WPS kullanarak bağlanma

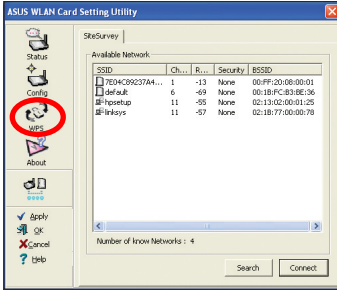
ASUS PCI-G31 WLAN Kart, kolay bir şekilde güvenli bir kablosuz ağ kurmanıza yardımcı olan WPS işlevini desteklemektedir.



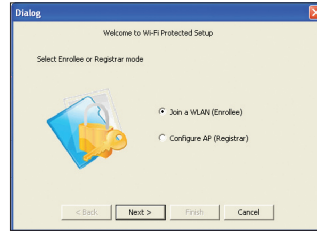
**ÖNEMLİ:** Bağlanmaya çalıştığınız AP veya istasyonun WPS işlevini desteklediğinden emin olun.

PCI-G31'i WPS etkin bir AP veya istasyona WPS basmalı düğme ile bağlanmak için:

1. **WPS** sekmesine tıklayın.



2. **Join a WLAN (Bir WLAN'a katıl)** (Enrollee) (Kayıtlı) öğesini seçin, ardından **Next'e (İleri)** tıklayın.



3. **Push Button on AP (AP'deki Basmalı Düğme) (PBC) (PBC)** öğesini seçin, ardından **Next'e (İleri)** tıklayın.



4. Kablosuz bir bağlantı kurmak için AP veya istasyondaki WPS düğmesine basın. Resimde WPS'nin ağ için tarama yaptığı gösterilir.



5. **Finish'e (Bitir)** tıklayın. Resimde WLAN kartınızın ağa başarılı bir şekilde bağlandığı gösterilir.



**NOT:** Bu WLAN kartının kullanımıyla ilgili daha fazla bilgi için, Destek CD'sinde bulunan kullanım kılavuzuna bakın.

## 1. 簡介

### 1.1 包裝內容

請檢查您的 PCI-G31 無線網卡包裝中是否包含以下內容。

- 無線網卡 x1
- 安裝光碟片 x1
- 快速安裝使用手冊 x1
- 全向型天線 x1
- 保證卡 x1
- 介面卡短鐵片 x1



注意：以上物品若有任何缺失或損毀，請儘速連絡您的經銷商。

### 1.2 系統需求

在使用 PCI-G31 無線網卡之前，請檢查您的系統是否符合以下要求：

- Windows® Vista/XP/2000/ME
- 標準 32-bit PCI 插槽
- 32MB 或以上系統記憶體
- 300MHz 或以上處理器

### 1.3 硬體

#### 狀態指示燈

PCI-G31 無線網卡具備一個狀態指示燈，顯示無線網卡的即時狀態。

亮燈：無線網卡已開啟。

閃爍：無線網卡已成功連線至無線網路，且正在傳送或接收資料。

熄滅：無線網卡已關閉。

#### 外接全向型天線

PCI-G31 無線網卡包裝內含一支外接全向型天線。建議您將天線直立安裝以獲取最大的訊號覆蓋範圍與最佳訊號品質。



## 2. 安裝 PCI-G31 驅動程式與應用程式



**重要：**請先將華碩 PCI-G31 無線網卡安裝到您的電腦，然後再從附贈光碟中安裝驅動程式與應用程式。

請依照以下步驟安裝華碩 PCI-G31 無線網卡的驅動程式與應用程式：

1. 將附贈光碟放入光碟機。若您的電腦開啟了「自動安插通知」功能，將出現一個自動執行畫面。



**注意：**若您的電腦沒有開啟「自動安插通知」功能，請在附贈光碟的根目錄下雙按 **SETUP.EXE** 檔案開啟程式。

2. 在自動執行畫面中，選擇您要安裝的語言並點選 **安裝華碩無線網卡應用程式 / 驅動程式**。
3. InstallShield Wizard 畫面出現。點選 **下一步 繼續**。



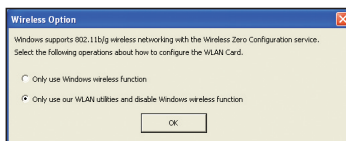
4. 點選 **安裝** 開始安裝。



5. 選擇 **是**，立即重新啟動電腦。點選 **完成** 完成安裝。



6. 當電腦重新啟動後，選擇 **Only use our WLAN utilities and disable Windows wireless function** 以允許華碩應用程式來管理無線網卡。點選 **OK**。



### 3. 使用華碩應用程式設定 PCI-G31

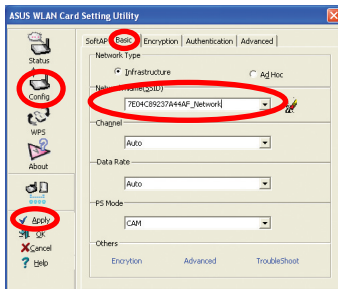
#### 3.1 手動連接到無線網路

請依照以下步驟將 PCI-G31 連接到基地台 (AP) (結構模式) 或工作站 (點對點模式)：

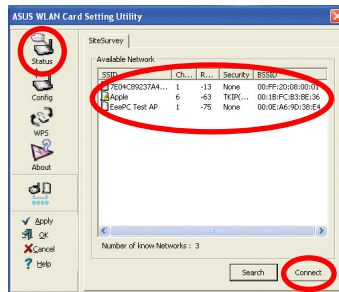
1. 右鍵點選 Windows 工作列中的華碩無線網卡設定程式圖示，並選擇 **Wireless Setting**。



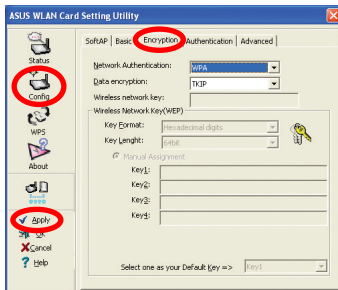
2. 將無線網卡的 **SSID** 設定為與您欲連線的 AP 或工作站相同。點選 **Apply**。



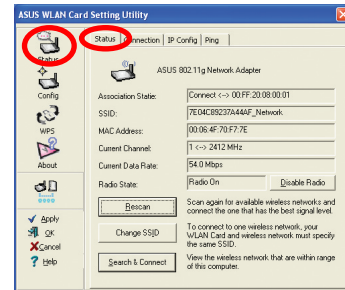
您也可以點選 **Status > Search & Connect** 以顯示 **SiteSurvey** 頁面，接著從 **Available Network** 列表中選擇一個網路。點選 **Connect**。



3. 若您的 AP 或工作站開啟了安全功能，請在您的無線網卡端做相同的設定。點選 **Apply**。



設定完成。**Status** 頁面會顯示 **Association State**、**Current Data Rate** 與 **Radio State** 等資訊。







## 3.2 使用 WPS 連線到無線網路

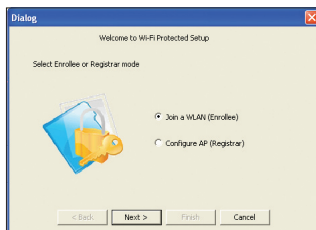
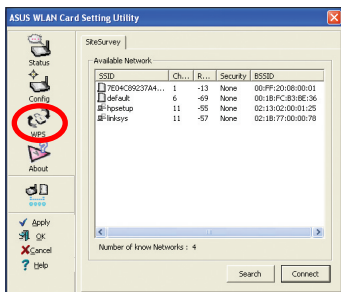
華碩 PCI-G31 無線網卡支援 WPS 功能，可幫助您更簡單地設定安全的無線網路。



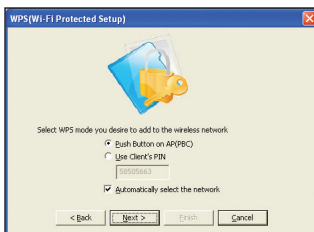
重要：請確認您欲連線的 AP 或工作站支援 WPS 功能。

請依照以下步驟使用 WPS 按鈕將 PCI-G31 連線到開啟 WPS 的 AP 或工作站：

1. 點選 WPS 標籤頁。
2. 選擇 Join a WLAN (Enrollee)，接著點選 Next。



3. 選擇 Push Button on AP (PBC)，接著點選 Next。
4. 按下 AP 或工作站上的 WPS 按鈕以建立無線連接。下圖所示表明 WPS 正在搜尋網路。



5. 點選 Finish。下圖所示表明您的無線網卡已經成功連線至網路。



注意：有關如何使用無線網卡的更多資訊，請參考附贈光碟中的使用手冊。

## 1. 简介

### 1.1 包装内容

请检查您的 PCI-G31 无线网卡包装中是否包含以下内容。

- 无线网卡 x1
- 安装光盘片 x1
- 快速安装使用手册 x1
- 全向型天线 x1
- 保证卡 x1
- 适配卡短铁片 x1



注意：以上物品若有任何缺失或损毁，请尽快联络您的经销商。

### 1.2 系统需求

在使用 PCI-G31 无线网卡之前，请检查您的系统是否符合以下要求：

- Windows® Vista/XP/2000/ME
- 标准 32-bit PCI 插槽
- 32MB 或以上系统内存
- 300MHz 或以上处理器

### 1.3 硬件

#### 状态指示灯

PCI-G31 无线网卡具备一个状态指示灯，显示无线网卡的实时状态。

亮灯：无线网卡已开启。

闪烁：无线网卡已成功连接至无线网络，且正在传送或接收数据。

熄灭：无线网卡已关闭。

#### 外接全向型天线

PCI-G31 无线网卡包装内含一支外接全向型天线。建议您将天线直立安装以获取最大的信号覆盖范围与最佳信号品质。



## 2. 安装 PCI-G31 驱动程序与应用程序



**重要：**请先将华硕 PCI-G31 无线网卡安装到您的电脑，然后再从附赠光盘中安装驱动程序与应用程序。

请依照以下步骤安装华硕 PCI-G31 无线网卡的驱动程序与应用程序：

1. 将附赠光盘放入光驱。若您的电脑开启了「自动播放」功能，将出现一个自动运行画面。



**注意：**若您的电脑没有开启「自动播放」功能，请在附赠光盘的根目录下双击 SETUP.EXE 文件开启程序。

2. 在自动执行画面中，选择您要安装的语言并点击【安装华硕无线网卡应用程序 / 驱动程序】。
3. InstallShield Wizard 画面出现。点击【下一步】继续。



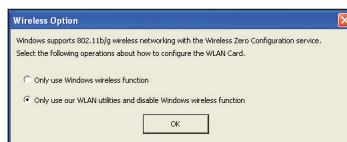
4. 点击【安装】开始安装。



5. 选择【是，立即重新启动电脑】。点击【完成】完成安装。



6. 当电脑重新启动后，选择【Only use our WLAN utilities and disable Windows wireless function】以允许华硕应用程序来管理无线网卡。点击【OK】。

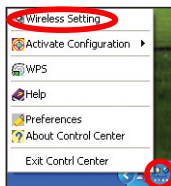


## 3. 使用华硕应用程序设置 PCI-G31

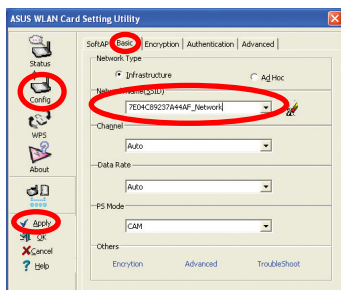
### 3.1 手动连接到无线网络

请依照以下步骤将 PCI-G31 连接到接入点 (AP) (结构模式) 或工作站 (点对点模式)：

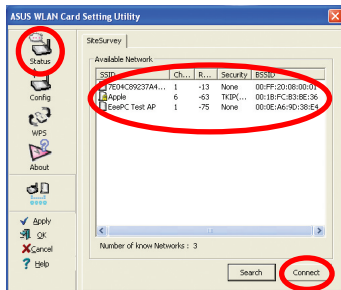
1. 右键点击 Windows 任务栏中的华硕无线网卡设置程序图标，并选择 Wireless Setting。



2. 将无线网卡的 SSID 设置为与您欲连接的 AP 或工作站相同。点击【Apply】。

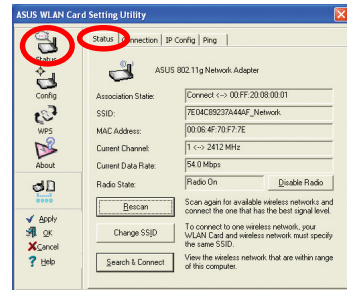
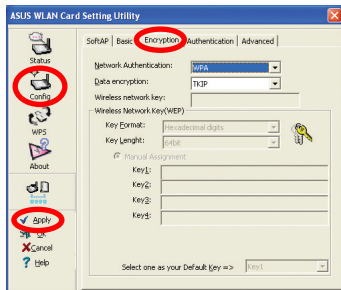


您也可以点击【Status】>【Search & Connect】以显示 SiteSurvey 页面，接着从 Available Network 列表选择一个网络，然后点击【Connect】。



3. 若您的 AP 或工作站开启了安全功能，请在您的无线网卡端做相同的设置。点击【Apply】。

设置完成。Status 页面会显示 Association State、Current Data Rate 与 Radio State 等信息。





## 3.2 使用 WPS 连接到无线网络

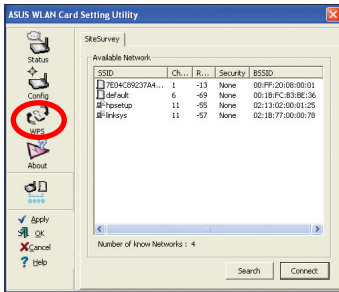
华硕 PCI-G31 无线网卡支持 WPS 功能，可帮助您更简单地设置安全的无线网络。



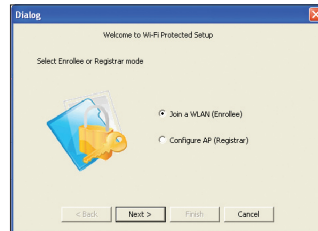
**重要：**请确认您欲连接的 AP 或工作站支持 WPS 功能。

请依照以下步骤使用 WPS 按钮将 PCI-G31 连接到开启 WPS 的 AP 或工作站：

1. 点击 WPS 标签页。



2. 选择【Join a WLAN (Enrollee)】，接着点击【Next】。



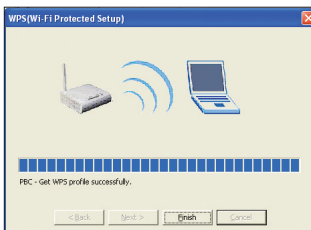
3. 选择【Push Button on AP (PBC)】，接着点击【Next】。



4. 按下 AP 或工作站上的 WPS 按钮以建立无线连接。下图所示表明 WPS 正在搜索网络。



5. 点击【Finish】。下图所示表明您的无线网卡已经成功连接至网络。



**注意：**有关如何使用无线网卡的更多信息，请参考附赠光盘中的用户手册。

部件名称	有害物质或元素					
	铅 (Pb)	镉 (Cd)	汞 (Hg)	六价铬 (Cr(VI))	多溴联苯 (PBB)	多溴二苯醚 (PBDE)
印刷电路板及零组件	○	○	○	○	○	○
外殼	NA	NA	NA	NA	NA	NA
电源适配器	NA	NA	NA	NA	NA	NA
外部信號連接頭及線材	○	○	○	○	○	○
中央處理器與內存	○	○	○	○	○	○

○：表示该有毒有害物质在该部件所有均质材料中的含量均在SJ/T 11363-2006标准规定的限量要求以下。

X：表示该有毒有害物质至少在该部件的某一均质材料中的含量超出SJ/T 11363-2006标准规定的限量要求，然该部件仍符合欧盟指令2002/95/EC的规范。

备注：此产品所标示之环保使用年限，系指在一般正常使用状况下。

## **ASUSTeK COMPUTER INC. (Asia-Pacific)**

Company address: 15 Li-Te Road, Beitou, Taipei 11259  
Telephone: +886-2-2894-3447  
Fax: +886-2-2890-7798  
E-mail: [info@asus.com.tw](mailto:info@asus.com.tw)  
Web site: <http://www.asus.com.tw>

## **ASUS COMPUTER INTERNATIONAL (America)**

Company address: 800 Corporate Way, Fremont, CA 94538, USA  
General (fax): +1-510-608-4555  
Web site address: <http://usa.asus.com>

### **Technical support**

General support: +1-502-995-0883  
Support (fax): +1-502-933-8713  
Online support: <http://vip.asus.com/eservice/techserv.aspx>

## **ASUS COMPUTER GmbH (Germany & Austria)**

Company address: Harkortstr. 21-23, 40880 Ratingen, Germany  
General (tel): +49-02102-95990  
General (fax): +49-02102-959911  
Web site address: <http://www.asuscom.de>  
Online contact: <http://www.asuscom.de/sales>

### **Technical support**

Components: +49-02102-95990  
Fax: +49-02102-959911  
Online support: <http://vip.asus.com/eservice/techserv.aspx?SLanguage=de-de>  
Global service center: <http://support.asus.com/service/service.aspx?SLanguage=en-us>  
FAQ: <http://support.asus.com/faq/faq.aspx?SLanguage=en-us>  
Online technical support: <http://support.asus.com/techserv/techserv.aspx?SLanguage=en-us>

<b>Manufacturer:</b>	<b>ASUSTeK Computer Inc.</b> Tel: +886-2-2894-3447 Address: No. 150, LI-DE RD., PEITOU, TAIPEI 112, TAIWAN
<b>Authorised representative in Europe:</b>	<b>ASUS Computer GmbH</b> Address: HARKORT STR. 21-23, 40880 RATINGEN, GERMANY
<b>Authorised distributors in Turkey:</b>	<b>BOGAZICI BIL GISAYAR SAN. VE TIC. A.S.</b> Tel: +90 212 3311000 Address: AYAZAGA MAH. KEMERBURGAZ CAD. NO.10 AYAZAGA/ISTANBUL
	<b>INDEX BILGISAYAR SISTEMLERI MUHENDISLIK SAN. VE TIC. A.S.</b> Tel: +90 212 3312121 Address: AYAZAGA MAH: CENDERE YOLU NO:9 AYAZAGA/ISTANBUL