



802.11g PCI Wireless Adapter

Installation Guide



Notice to Users

©2008 2Wire, Inc. All rights reserved. This manual in whole or in part, may not be reproduced, translated, or reduced to any machine-readable form without prior written approval.

2WIRE PROVIDES NO WARRANTY WITH REGARD TO THIS MANUAL, THE SOFTWARE, OR OTHER INFORMATION CONTAINED HEREIN AND HEREBY EXPRESSLY DISCLAIMS ANY IMPLIED WARRANTIES OF MERCHANTABILITY OR FITNESS FOR ANY PARTICULAR PURPOSE WITH REGARD TO THIS MANUAL, THE SOFTWARE, OR SUCH OTHER INFORMATION, IN NO EVENT SHALL 2WIRE, INC. BE LIABLE FOR ANY INCIDENTAL, CONSEQUENTIAL, OR SPECIAL DAMAGES, WHETHER BASED ON TORT, CONTRACT, OR OTHERWISE, ARISING OUT OF OR IN CONNECTION WITH THIS MANUAL, THE SOFTWARE, OR OTHER INFORMATION CONTAINED HEREIN OR THE USE THEREOF.

2Wire, Inc. reserves the right to make any modification to this manual or the information contained herein at any time without notice. The software described herein is governed by the terms of a separate user license agreement.

2Wire, and the 2Wire logo are registered trademarks of 2Wire, Inc. All other trademarks are trademarks of their respective owners.

5100-000475-000 Rev B 04/2008



Wireless PCI Adapter and Driver Installation

2Wire's 802.11g Internal Wireless PCI Adapter enables wireless capability on your computer. Using this adapter gives you the same connectivity as Ethernet without the wires. Expanding or redesigning your network is easy, and unlike cabled Ethernet, the 2Wire 802.11g Internal Wireless PCI Adapter allows you to roam throughout the home or office while remaining connected to the local area network (LAN).

Windows Vista

These instructions describe the procedure to install the PCI adapter and driver for the 2Wire Internal Wireless PCI Adapter under Microsoft Windows Vista, and to run



a wireless configuration program to configure your 2Wire Internal Wireless PCI Adapter to work with the 2Wire gateway.



Note: The driver software available for download is for new installations only. If you have already used the driver software supplied on the CD to set up your 2Wire Internal Wireless PCI Adapter, do not re-install the driver software.

Follow these steps to complete the adapter installation:

Step 1 - Install the 2Wire 802.11g Internal Wireless PCI Adapter.

Step 2 - Install the adapter driver from your 2Wire Wireless Installation CD.

Step 3 - Configure the Wireless Manager.

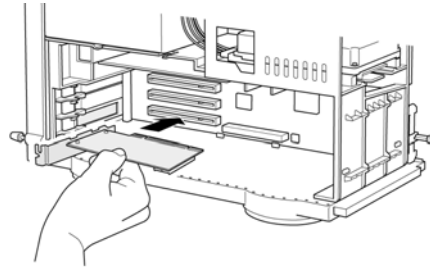
The following sections give you detailed instructions for completing each step.

Step 1: Install the 2Wire 802.11g Internal Wireless PCI Adapter



Note: To avoid static electric charges, touch an unpainted metal surface before installing or working with the adapter.

1. Turn off your computer and unplug the power cord.
2. Remove the outer cover of your computer and locate an available PCI slot. PCI slots are easily identified by their beige or white color.
3. Remove the backplate. (The backplate is the small piece of metal that covers the opening for the Internal Wireless Adapter on the back cover that you just removed.)



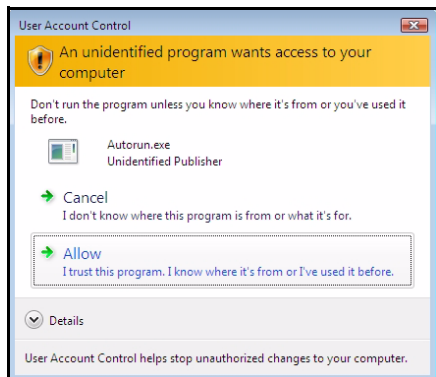
4. Insert the Internal Wireless PCI Adapter into the PCI slot, being careful not to damage any parts. After the adapter is securely seated, attach the external antenna.
5. Secure the adapter with the screw from the backplate and replace the cover of your computer.
6. Turn on your computer.
7. The operating system may initiate an automatic search for driver software. At this point, simply proceed to “Step 2: Installing the Driver” on page 5.

Follow the driver installation instructions appropriate to your operating system to complete your 2Wire 802.11g Internal Wireless PCI Adapter installation.

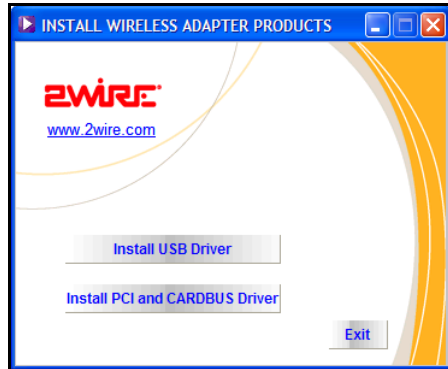


Step 2: Installing the Driver

1. Insert the CD into your computer and wait for the installer to load.
2. You may see a User Account Control dialog box, where you must click **Allow - I trust this program** in order to proceed with the installation.



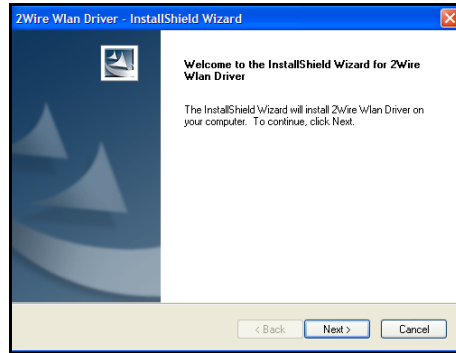
3. The Install Wireless Adapter Products main menu will display on your screen.
4. Click the **Install PCI and CARDBUS Driver** button. The Install PCI and CARDBUS Driver menu displays.
5. Choose and click **Windows Vista Driver**. A separate 2Wire WLAN Driver InstallShield Wizard window opens to prepare installation setup.



Note: The 2Wire Wireless Manager utility is not installed on computer systems running Microsoft Windows Vista 64-bit.

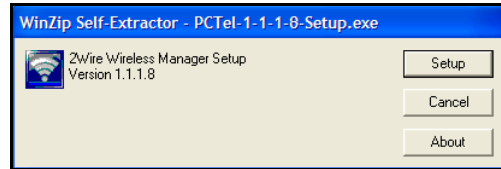


6. Click **OK** to continue. The 2Wire WLAN Driver Welcome window opens.
7. Click **Next** to continue. The 2Wire WLAN Driver - Ready to Install the Program window opens.
8. Click **Install** to begin the installation. The InstallShield Wizard will install the driver software.
9. Once the driver has been installed, a new window for the 2Wire Wireless Manager Setup will open automatically.



10. Click **Setup** to continue with the installation of the 2Wire Wireless Manager software.

11. Next, the InstallShield Wizard for 2Wire Wireless Manager will open. The InstallShield Wizard will let you install, repair, or remove 2Wire Wireless Manager from your computer.



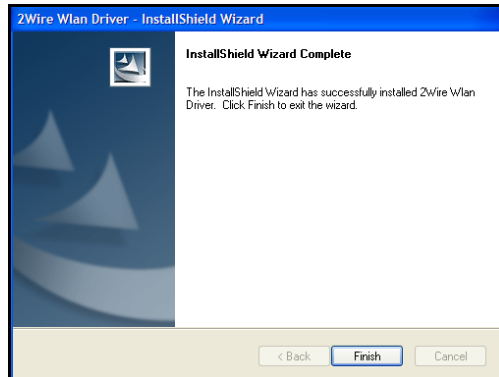
12. From the Welcome to the InstallShield Wizard for 2Wire Wireless Manager window, click **Next** to continue the installation.
13. Click to accept the terms in the License Agreement, and click **Next**.
14. Click **Next** to install the program to the default folder location, or click **Change** to install to a different folder of your choice.



15. The Ready to Install the Program window opens. Click Install to commence the installation.
16. Wait for the installation to complete. You can monitor the installation status in the status bar window.



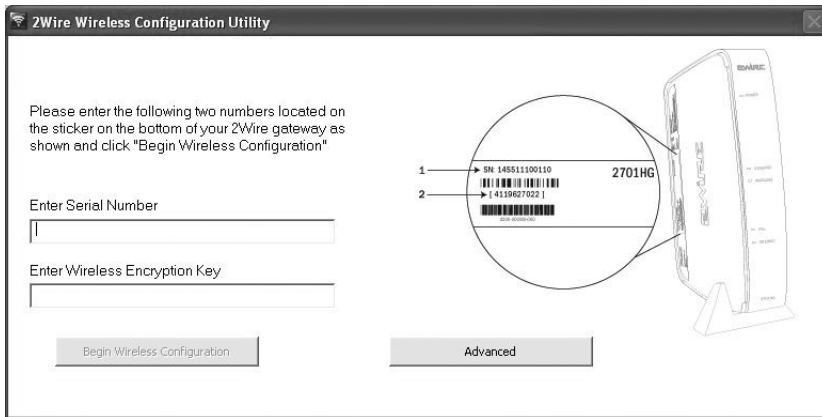
17. Upon completion, the InstallShield Wizard Completed window will open.
18. Click **Finish**.
19. Continue to Step 3: Configure the Wireless Manager.



Step 3: Configure the Wireless Manager

- 1.** Once you have finished with Step 2, the 2Wire Wireless Configuration Utility starts automatically.
- 2.** Follow the on-screen instructions to configure your wireless setting. Enter the 2Wire gateway's serial number and encryption key, located on the bottom of your 2Wire gateway.





3. Click **Begin Wireless Configuration** to continue.



4. Once the 2Wire Wireless Configuration Utility finishes, the installation window will close and the 2Wire Wireless Manager window will open.
5. You are now ready to begin using the adapter to connect wirelessly.



Windows XP, Windows 2000

These instructions describe the procedure to install the PCI adapter and driver for the 2Wire Internal Wireless PCI Adapter under Microsoft Windows XP and Windows 2000, and to run a wireless configuration program to configure your 2Wire Internal Wireless PCI Adapter to work with the 2Wire gateway.



Note: The driver software available for download is for new installations only. If you have already used the driver software supplied on the CD to set up your 2Wire Internal Wireless PCI Adapter, do not re-install the driver software.



Follow these steps to complete the adapter installation:

Step 1 - Install the 2Wire 802.11g Internal Wireless PCI Adapter.

Step 2 - Install the adapter driver from your 2Wire Wireless Installation CD.

Step 3 - Configure the Wireless Manager.

The following sections give you detailed instructions for completing each step.

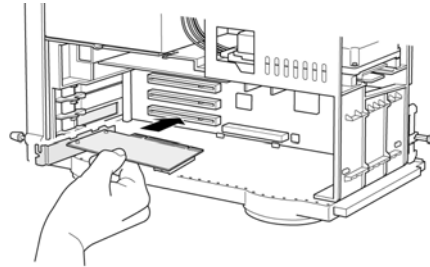


Step 1: Install the 2Wire 802.11g Internal Wireless PCI Adapter



Note: To avoid static electric charges, touch an unpainted metal surface before installing or working with the adapter.

1. Turn off your computer and unplug the power cord.
2. Remove the outer cover of your computer and locate an available PCI slot. PCI slots are easily identified by their beige or white color.
3. Remove the backplate. (The backplate is the small piece of metal that covers the opening for the Internal Wireless Adapter on the back cover that you just removed.)



4. Insert the Internal Wireless PCI Adapter into the PCI slot, being careful not to damage any parts. After the adapter is securely seated, attach the external antenna.
5. Secure the adapter with the screw from the backplate and replace the cover of your computer.
6. Turn on your computer.



7. You may see the Windows Found New Hardware Wizard screen. If this occurs, simply click **Cancel** to continue with the original driver installation workflow.

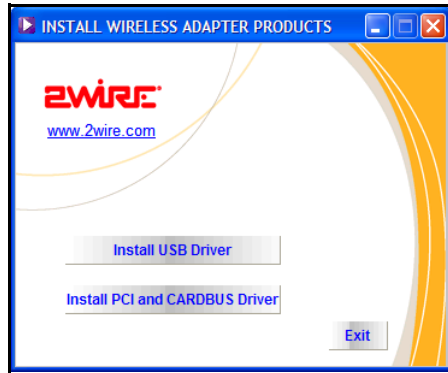


Follow the driver installation instructions appropriate to your operating system to complete your 2Wire 802.11g Internal Wireless PCI Adapter installation.

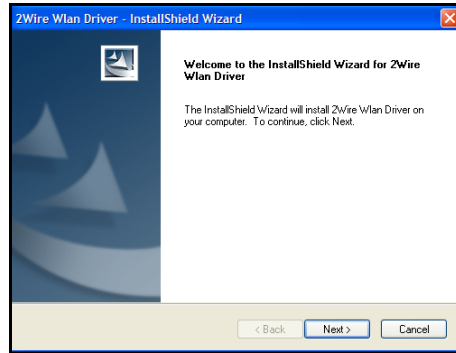


Step 2: Installing the Driver

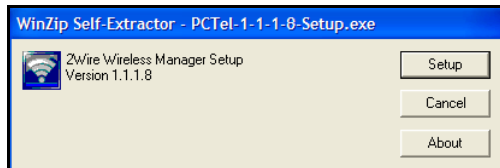
1. Insert the CD into your computer and wait for the installer to load.
2. The Install Wireless Adapter Products main menu will display on your screen.
3. Click the **Install PCI and CARDBUS Driver** button. The Install PCI and CARDBUS Driver menu displays.
4. Depending on your operating system, choose and click **Windows XP Driver** or **Windows 2000 Driver**. A separate 2Wire WLAN Driver InstallShield Wizard window opens to prepare installation setup.



5. Click **OK** to continue. The 2Wire WLAN Driver Welcome window opens.
6. Click **Next** to continue. The 2Wire WLAN Driver - Ready to Install the Program window opens.
7. Click **Install** to begin the installation. The InstallShield Wizard will install the driver software.
8. Once the driver has been installed, a new window for the 2Wire Wireless Manager Setup will open automatically.



9. Click **Setup** to continue with the installation of the 2Wire Wireless Manager software.



10. Next, the InstallShield Wizard for 2Wire Wireless Manager will open. The InstallShield Wizard will let you install, repair, or remove 2Wire Wireless Manager from your computer.



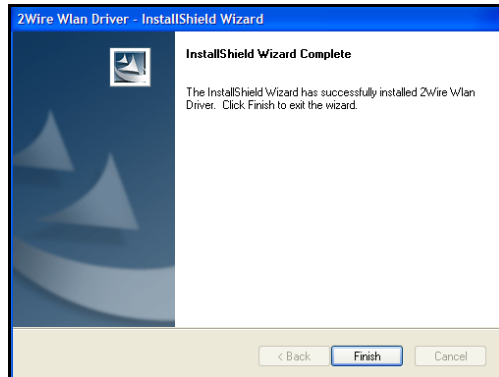
11. From the Welcome to the InstallShield Wizard for 2Wire Wireless Manager window, click **Next** to continue the installation.
12. Click to accept the terms in the License Agreement, and click **Next**.
13. Click **Next** to install the program to the default folder location, or click **Change** to install to a different folder of your choice.



14. The Ready to Install the Program window opens. Click Install to commence the installation.
15. Wait for the installation to complete. You can monitor the installation status in the status bar window.



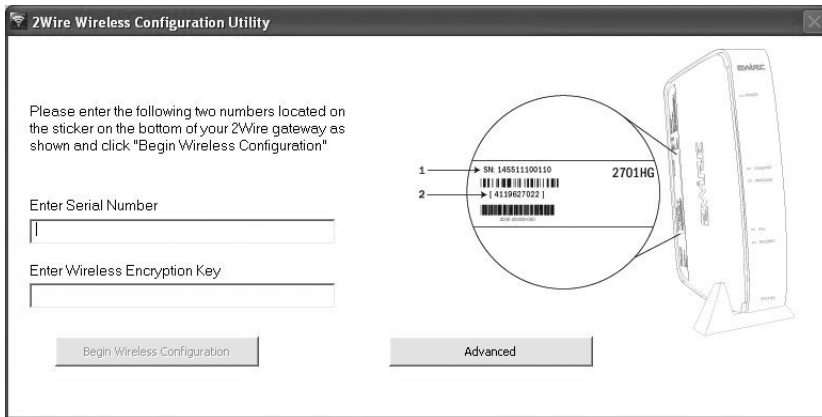
16. Upon completion, the InstallShield Wizard Completed window will open.
17. Click **Finish**.
18. Continue to Step 3: Configure the Wireless Manager.



Step 3: Configure the Wireless Manager

- 1.** Once you have finished with Step 2, the 2Wire Wireless Configuration Utility starts automatically.
- 2.** Follow the on-screen instructions to configure your wireless setting. Enter the 2Wire gateway's serial number and encryption key, located on the bottom of your 2Wire gateway.





3. Click **Begin Wireless Configuration** to continue.



4. Once the 2Wire Wireless Configuration Utility finishes, the installation window will close and the 2Wire Wireless Manager window will open.
5. You are now ready to begin using the adapter to connect wirelessly.



Regulatory Information

FCC Statement

This device has been tested and complies with the specifications for a Class B digital device, pursuant to Part 15 of the FCC rules. These rules are designed to provide reasonable protection against harmful interference in a residential installation. This equipment generates, uses, and can radiate radio frequency energy and, if not installed and used according to the instructions, may cause harmful interference to radio communications. However, there is no guarantee that interference will not occur in a particular installation. If this equipment does cause harmful interference to radio or television reception, which is found by turning the equipment off and on, the user is encouraged to try to correct the interference by one or more of the following measures:

- Reorient or relocate the receiving antenna.
- Increase the separation between the equipment and the receiver.
- Connect the equipment into an outlet on a circuit different from that to which the receiver is connected.
- Consult the dealer or an experienced radio/TV technician for help.



