



# Wireless USB Adapter

Installation Guide



5100-000099-000 Rev C



## Wireless USB Adapter

The Wireless USB Adapter is a wireless networking device that is connected to a USB port on your computer using a USB cable. Using the Wireless USB Adapter, you can communicate with one or more computers that are equipped with wireless adapters. Where a standard Ethernet card requires a cable connection to a hub or a patch panel, wireless networking provides the same connectivity without the wires. Expanding or redesigning your network is easy, and unlike cabled Ethernet, the Wireless USB Adapter allows users to roam throughout the network while remaining connected to the LAN.

### Installation

Follow these steps to install the Wireless USB Adapter:

**Step 1** - Install the Wireless USB Adapter.

**Step 2** - Add the adapter to your computer and install the drivers.

**Step 3** - Reboot your computer so Windows recognizes the adapter.

The following sections give you detailed instructions for completing each step.

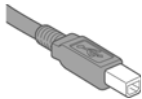


## Installing the Wireless USB Adapter

The supplied USB cable has a different type of USB connector on each end.



Series A connector. The Series A USB connector plugs into the USB port on your computer.



Series B connector. The Series B USB connector plugs into the back of your USB device, such as the port located on the back of your USB hub.

To install the Wireless USB Adapter, simply connect the adapter to an available USB port on your computer using the supplied USB cable.



## Installing Drivers For Windows 98SE

1. Power on your computer. The Add New Hardware Wizard opens. Click **Next** to continue.
2. When the next window opens, select **Search for a better driver for your device (Recommended)**, and click **Next**.



3. Insert the HomePortal Setup Wizard CD into your CD-ROM drive, uncheck **Floppy disk drives**, select the **CD-ROM drive** checkbox, and click **Next**.

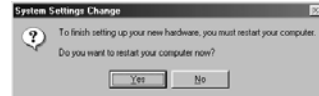
4. Windows locates the best driver for your device. Click **Next** to continue.



5. After the drivers are copied, click **Finish**.



6. When the System Setting Change window opens, click **Yes** to reboot your computer and complete the installation.



## Installing Drivers For Windows ME

1. Power on your computer and insert the HomePortal Setup Wizard CD into your CD-ROM drive.
2. When the Add New Hardware Wizard window opens, select **Automatic search for a better driver (Recommended)**, and click **Next**.

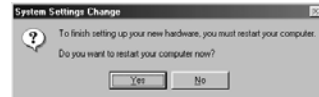




3. After the driver files are copied, click **Finish**.



4. When the System Settings Change window opens, click **Yes** to reboot your computer and complete the installation.



## Installing Drivers For Windows 2000

1. Power on your computer and insert the HomePortal Setup Wizard CD into your CD-ROM drive.
2. When the Found New Hardware Wizard window opens, click **Next** to continue.



3. The next window prompts you to install device drivers. Select **Search for a suitable driver for my device (recommended)**, and click **Next**.



4. When the Locate Driver Files window opens, uncheck **Floppy disk drives**, select the **CD-ROM** checkbox, and click **Next**.



5. When the Driver Files Search Results window opens, click **Next**.



6. Click **Finish** to complete the installation.



## Installing Drivers For Windows XP

1. Power on your computer and insert the HomePortal Setup Wizard CD into your CD-ROM drive.
2. When the Found New Hardware Wizard window opens, select **Install the software automatically (Recommended)** and click **Next** to continue.



3. The driver installs.



4. Click **Finish** to complete the installation.

